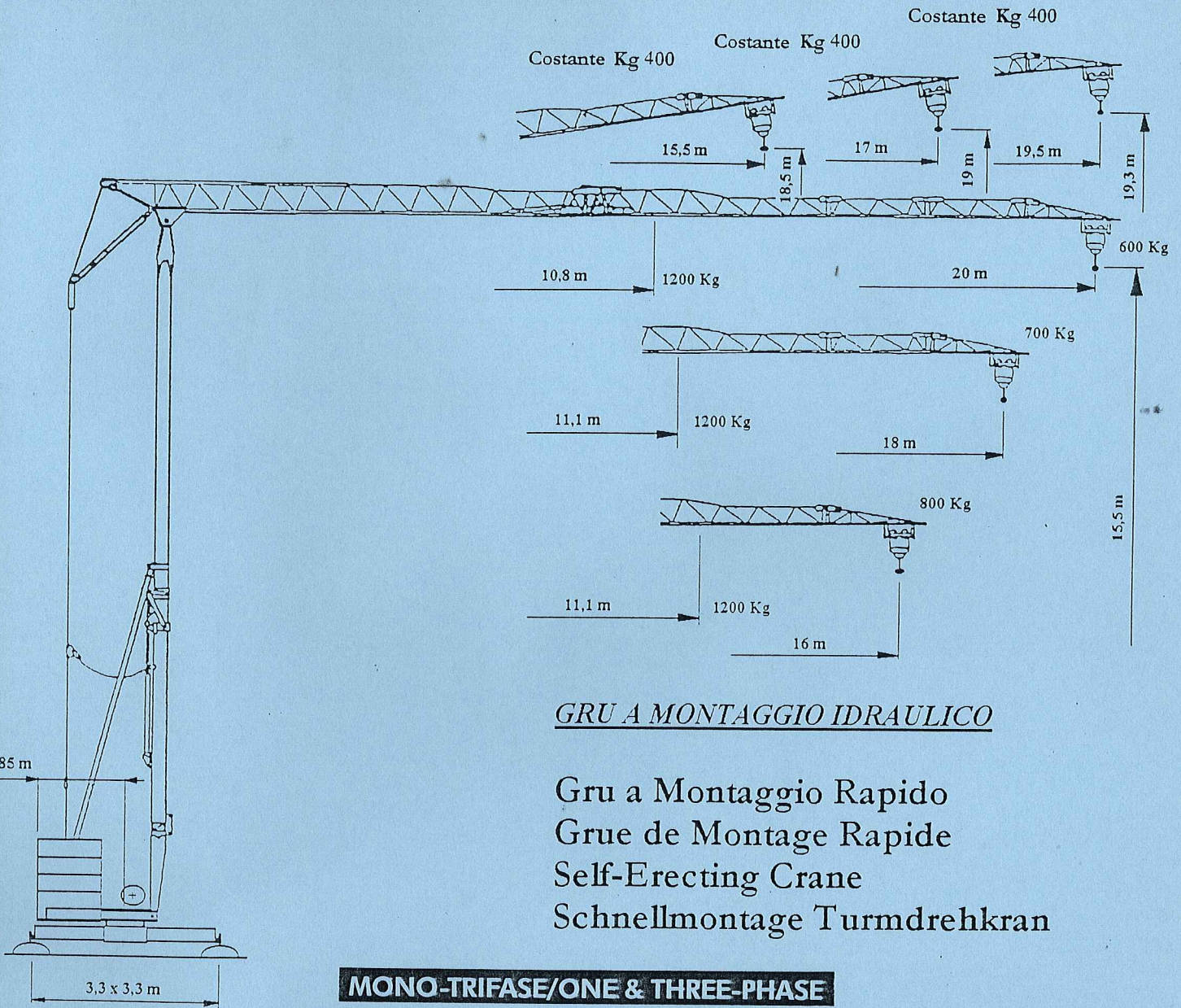


ALFA



GRU A MONTAGGIO IDRAULICO

Gru a Montaggio Rapido
 Grue de Montage Rapide
 Self-Erecting Crane
 Schnellmontage Turmdrehkran

MONO-TRIFASE/ONE & THREE-PHASE

	V = 6 m/min 1200 Kg	Altezza Gancio Hakenhöhe Hauteur s / crochet Height of hook 15,5 m
	V = 12,5 m/min 1200 Kg	Raggio di Rotazione Drebradius Rayon de giration arriere Rotating radius 1,85 m
	V = 25 m/min 600 Kg	Peso della Gru Konstruktionsgewicht Poids de la Gru Structural Weight 5000 Kg
	V = 24 m/min 8000 Kg	Zavorra Contrappeso Gegenballast Contre poids Counterweight
	n = 0,8 g/min 8010 daN	Pressione su uno Stabilizzatore Eckdruck / Raddruck Pression d'angle / charge par roue Corner pressure / wheel pressure

ASSORBIMENTO/MAINS SUPPLY

KW 3/5

ALFAMATIC

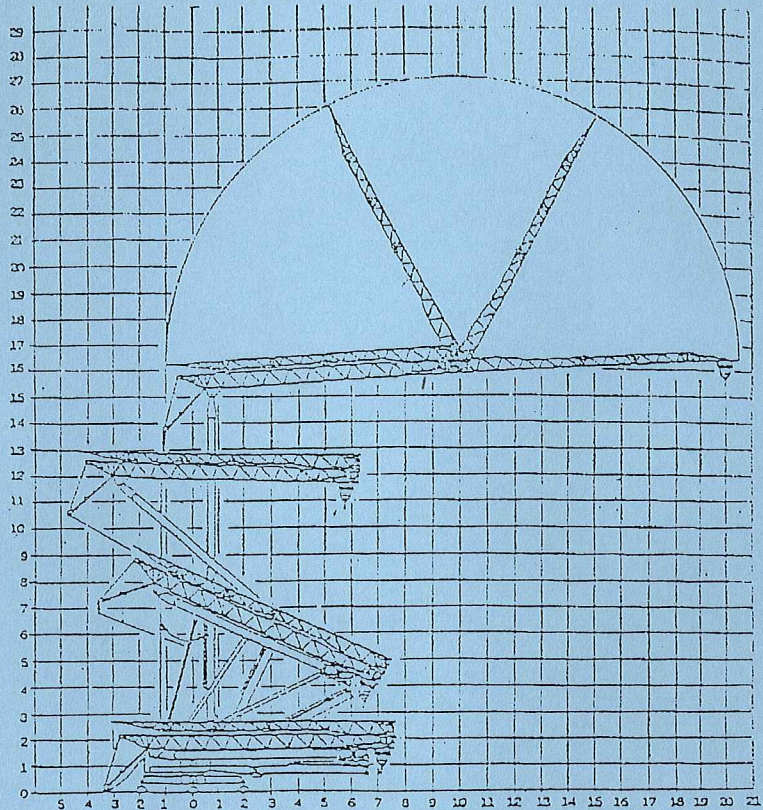
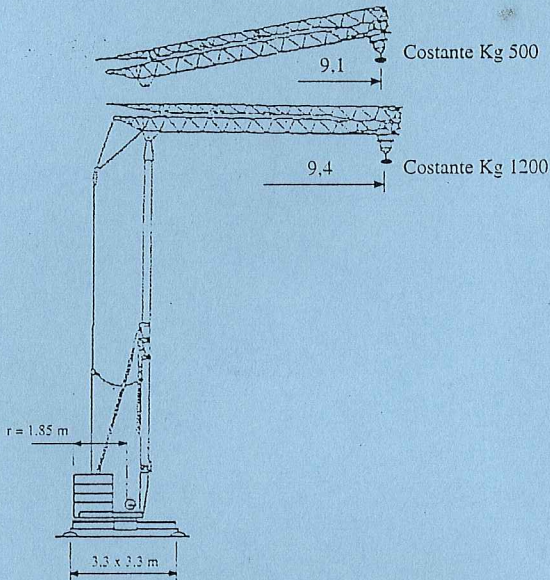
A 20 Standard

DATI TECNICI

CARACTÉRISTIQUES TECHNIQUES - TECHNICAL DATA
 TECHNISCHE DATEN - CARACTERISTICAS TECNICAS

Fasi di Montaggio
 Scheme de Montage
 Montagephasen
 Erecting Procedure

*Possibilità di lavoro con
 braccio ripiegato*

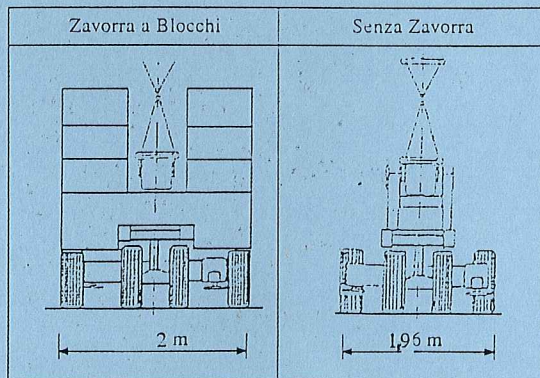
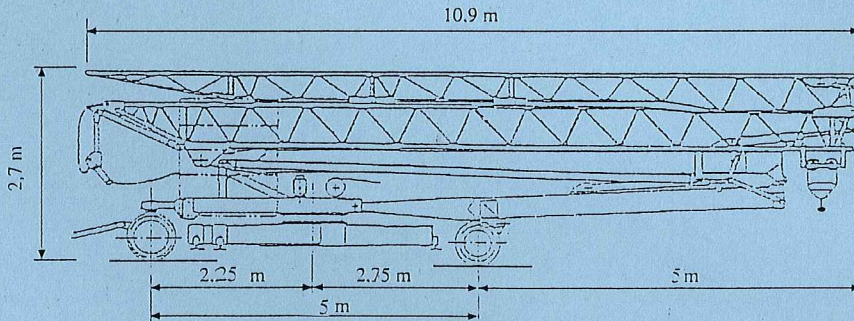


TRASPORTO

TRANSPORT

TRANSPORT

TRANSPORT



AGENTE/DEALER

