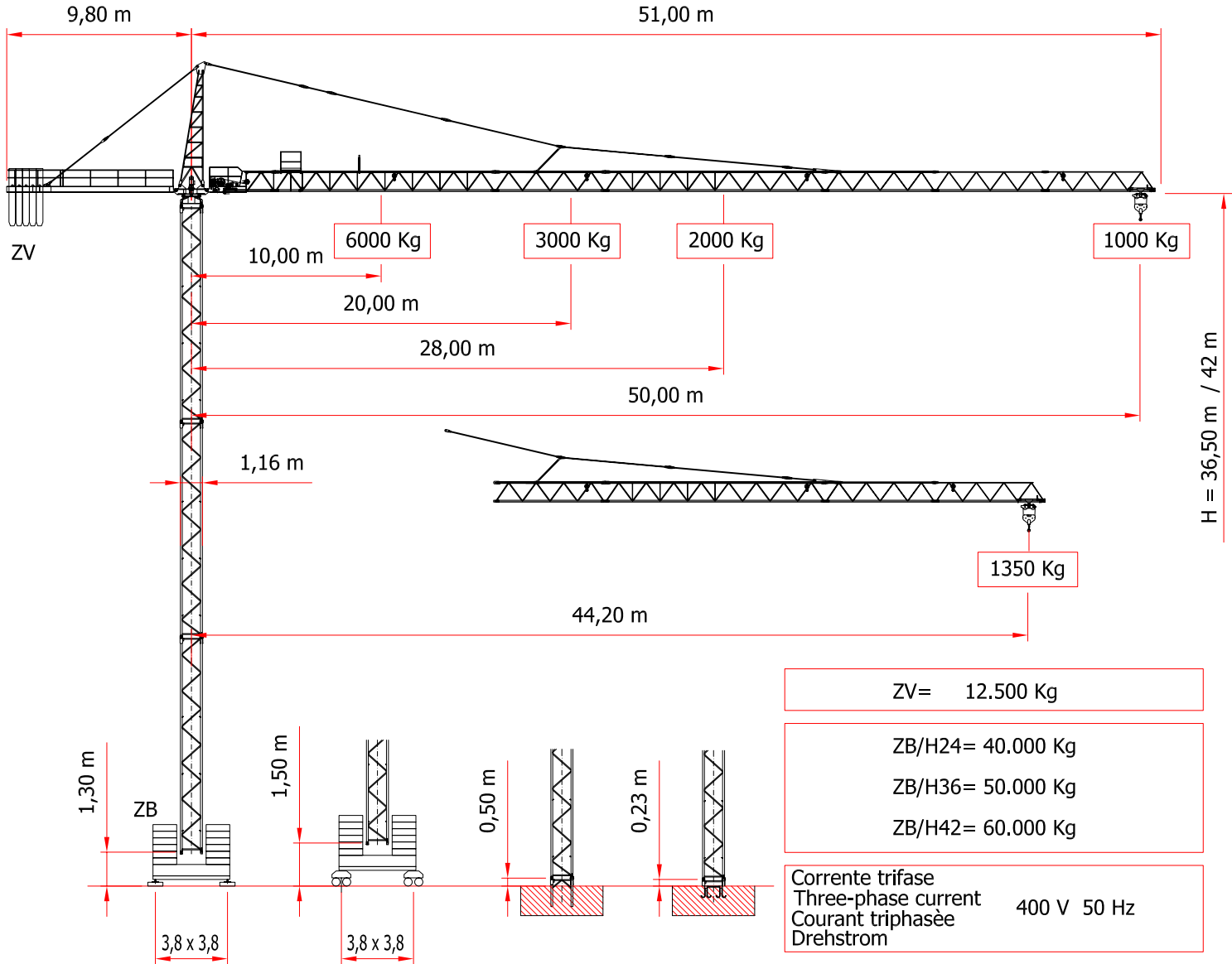


**SERIE CB 5010**

**CITY 50/1000**



ZV= 12.500 Kg

ZB/H24= 40.000 Kg

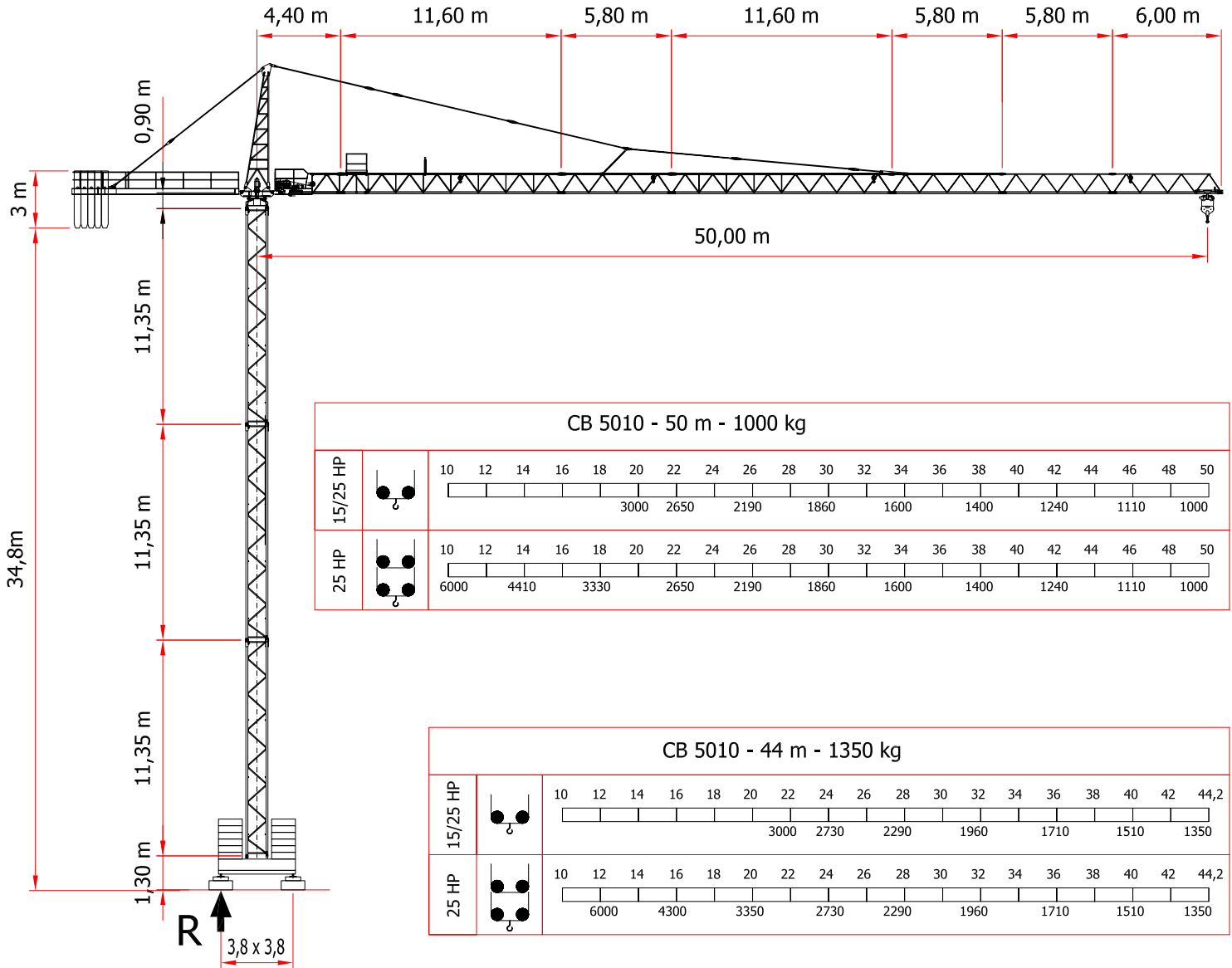
ZB/H36= 50.000 Kg

ZB/H42= 60.000 Kg

Corrente trifase  
 Three-phase current  
 Courant triphasée  
 Drehstrom 400 V 50 Hz

Potenza installata  
 Power set up  
 Puissance installée  
 Kraftbedarf KW 22 (Argano 15 HP)  
 KW 30 (Argano 25 HP)

	HP 15				HP 25						
	↑↓		Kg	m/1'	↑↓		Kg	m/1'			
			1500	40			1500	60		30/60 m/1' 2,2/2,2 kW INVERTER	
			3000	20			3000	30			0-1,1 rpm 2x40 Nm INVERTER
			3000	5			3000	7			
			-	-			3000	30			15 m/1' 2x3 kW INVERTER
			-	-			6000	15			
			-	-			6000	3,5			



**CB 5010**

REAZIONE  
**R = 45.000 Kg**  
 REACTION

DIN 15018 H<sub>1</sub> B<sub>2</sub> B<sub>3</sub> DIN 15019

MODIFICHE RISERVATE  
 SUBJECT TO MODIFICATION  
 RESERVA DE MODIFICACIONES  
 MODIFICATIONS RESERVEES  
 ANDERUNGEN VORBEHALTEN

