

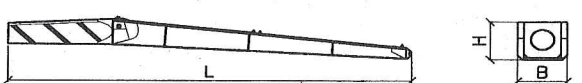



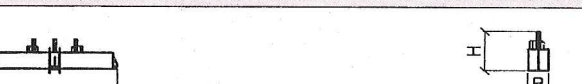
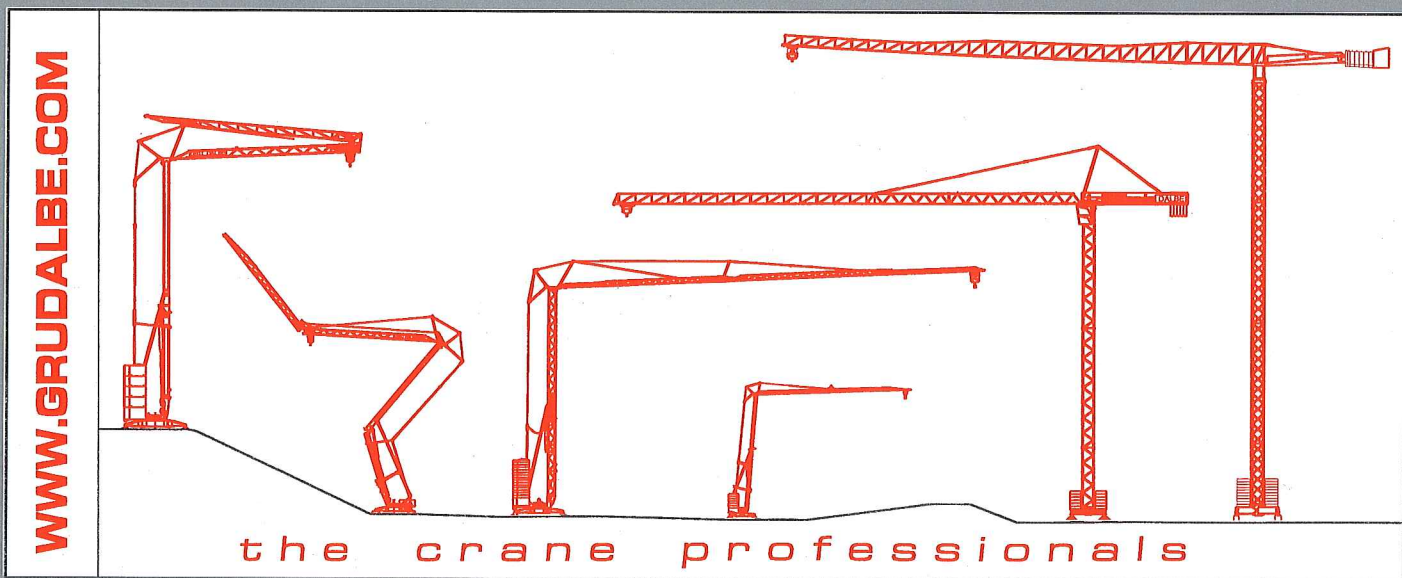


Lista dei componenti Packing list Lista de dimensiones y pesos		L (m)	B (m)	H (m)	kg
		11,9	1,17	1,17	2170
		5,9	1,17	1,17	1205
		9,7	0,8	0,7	1380
		6,14	1,18	2,1	645
		4,3	1,4	1,3	1900
		4,4	0,6	1,23	2900
		5,5	0,6	1,23	3240



AGENTE:

GRU DALBE s.r.l. - Gru automontanti e automatiche
21015 LONATE POZZOLO (Va) Italy - Via Europa, 84
Tel. (0)331/668425 - Fax (0)331/668762 - P.O. BOX 56
INTERNET: www.grudalbe.com • E-MAIL: db@grudalbe.com



SKY cranes **4000**

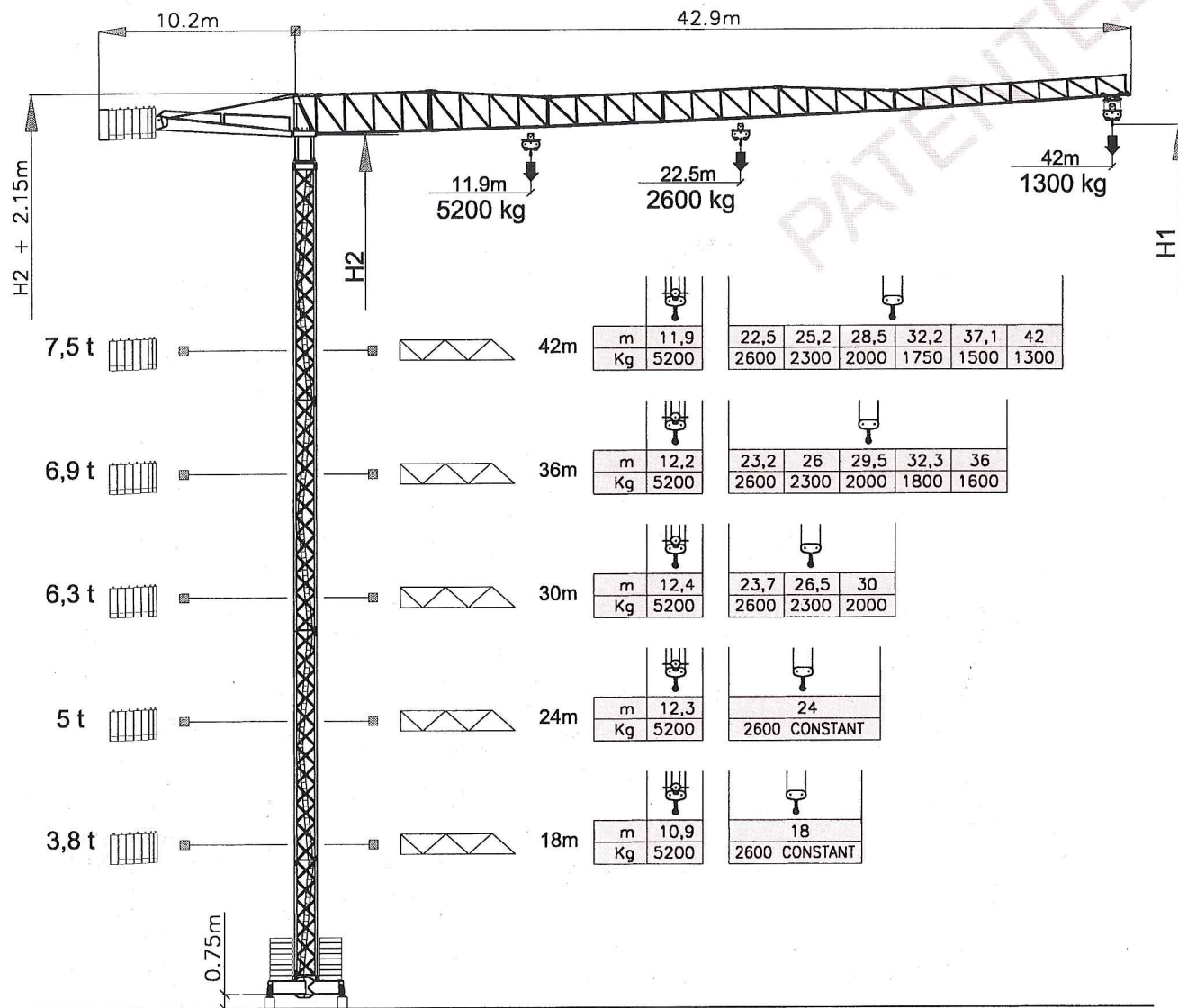


SKY cranes by
GRU DALBE

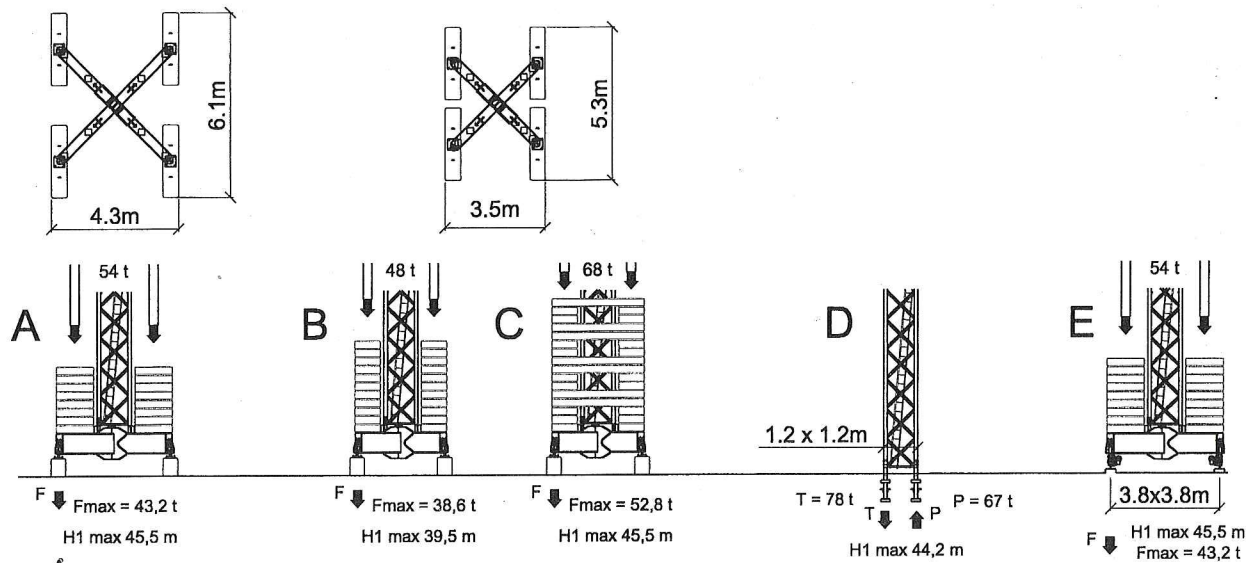


SKY 400 cranes

- 42 m - 1300 kg
- 36 m - 1600 kg
- 30 m - 2000 kg
- 24 m - 2600 kg
- 18 m - 2600 kg



Weight	Height (m)	Weight (Kg)	42m	36m	30m	24m	18m
7,5 t	11,9	5200	22,5	25,2	28,5	32,2	37,1
6,9 t	12,2	5200	2600	2300	2000	1750	1500
6,3 t	12,4	5200	23,2	26	29,5	32,3	36
5 t	12,3	5200	2600	2300	2000		
3,8 t	10,9	5200	24	18			

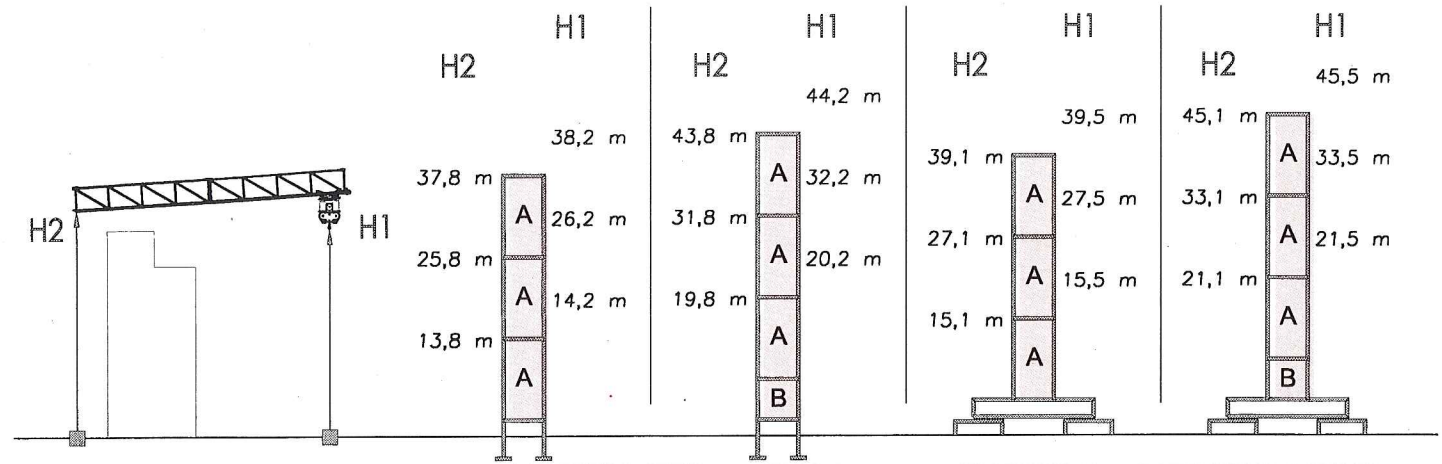


I dati e le misure hanno un valore indicativo, pertanto non sono impegnativi - Technical data are not binding and are only indicative.

COMPOSIZIONE TORRE

MASTS COMPOSITION

COMPOSICION MASTIL



- Montaggio con autogrù di ridotte dimensioni, peso dei pezzi scomponibile per esigenze di montaggio fino a 2,2 t
- Possibilità di montaggio braccio completamente assemblato a terra completo di funi, carrello e argani
- Possibilità di montaggio braccio a singoli elementi senza necessità di spazio al suolo
- Scelta di gruppi argano con o senza inverter e tiro in 4° taglia con raddoppio della portata
- Scelta di gruppi base con basamenti autolivellanti o elementi torre annessi
- Rotazione elettronica a controllo diretto per accostamenti facilitati
- Grande altezza utile con gru libera da ancoraggi

- Mounting by means of a small dimensions truck crane, disassembling of crane groups not exceeding 2.2 tons
- Possibility of mounting the jib completely assembled on the ground, comprising the ropes, trolley and winches
- Possibility of mounting the jib in single elements without any ground space needed

- Selection of the winch version with or without frequency inverter and 4-part reeving, thus doubling the load capacity
- Selection of the basic groups either with self-levelling bases or embedded tower elements
- Electronic slewing device with direct movement control for easy approaching
- Great useful height with crane free from anchoring

GRUPPO MOTORE MOTOR GROUP GRUPO MOTOR	US 220 S			US 300 I			US 380 I		
DATI ELETTRICI ELECTRICAL DATA DATOS ELECTRICOS	400 V (+5% -5%) - 50 Hz 20 kW TRIFASE - THREE-PHASE			400 V (+5% -5%) - 50 Hz 21 kW TRIFASE - THREE-PHASE			400 V (+5% -5%) - 50 Hz 29 kW TRIFASE - THREE-PHASE		
	m/min.	kg.	kW	m/min.	kg.	kW	m/min.	kg.	kW
SOLLEVAMENTO HOISTING ELEVACIÓN	4 20 40	2600 2600 1300	2,2 8,8 10,3	5 23 44 52	2600 2600 1300 650	11	7 32 62 76	2600 2600 1300 650	18
	ELECTRONIC FINE ADJUST.			ELECTRONIC FINE ADJUST.			ELECTRONIC FINE ADJUST.		
CARRELLO TROLLEY DISTRIBUCIÓN	21 42	1,5 2,2		10 26 50	2,2		10 26 50	2,2	
	ELECTRONIC FINE ADJUST.			ELECTRONIC FINE ADJUST.			ELECTRONIC FINE ADJUST.		
ROTAZIONE SLEWING ORIENTACIÓN	0,3 - 0,9 rpm			55 Nm			ELECTRONIC SENSITIVE SLEWING		
TRASLAZIONE RAIL CARRIL	17,0 m/min.			2x2,2 kW					