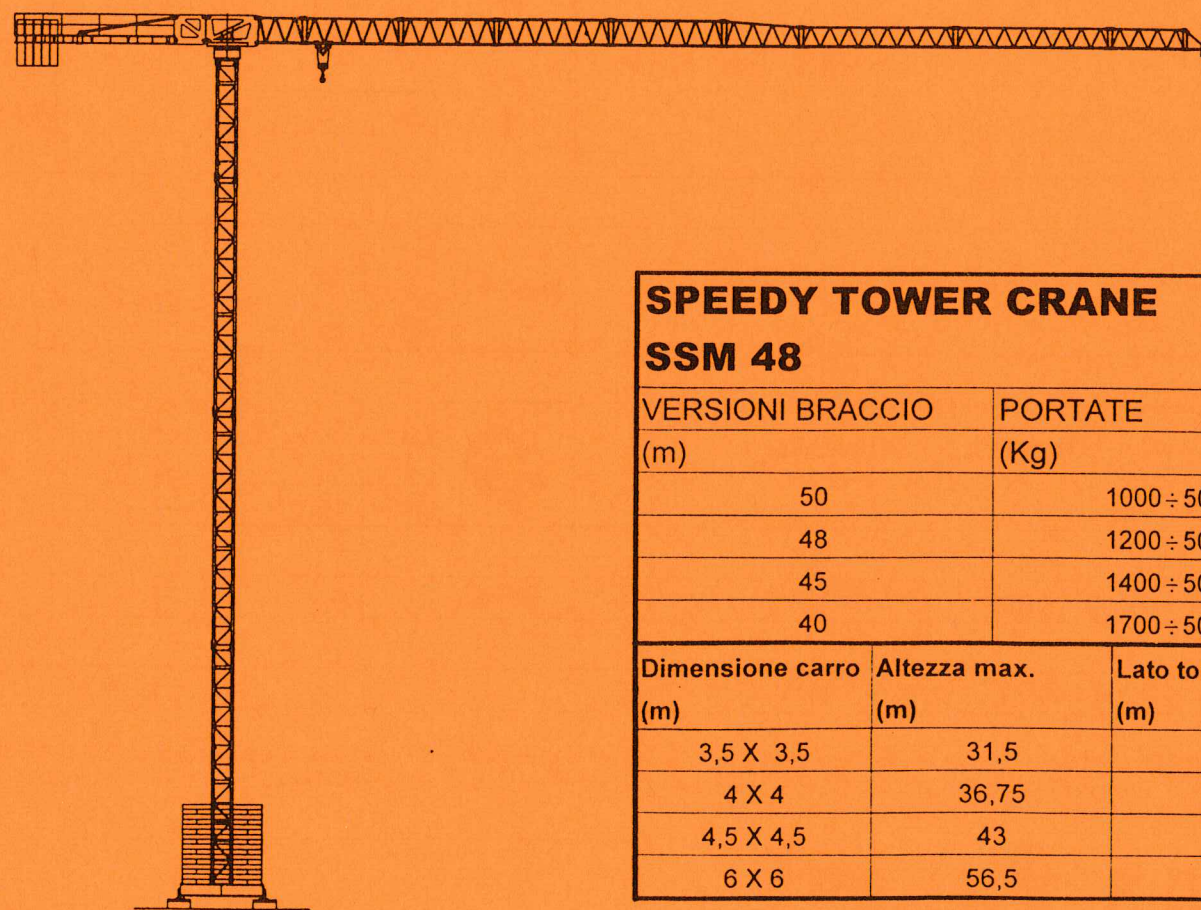


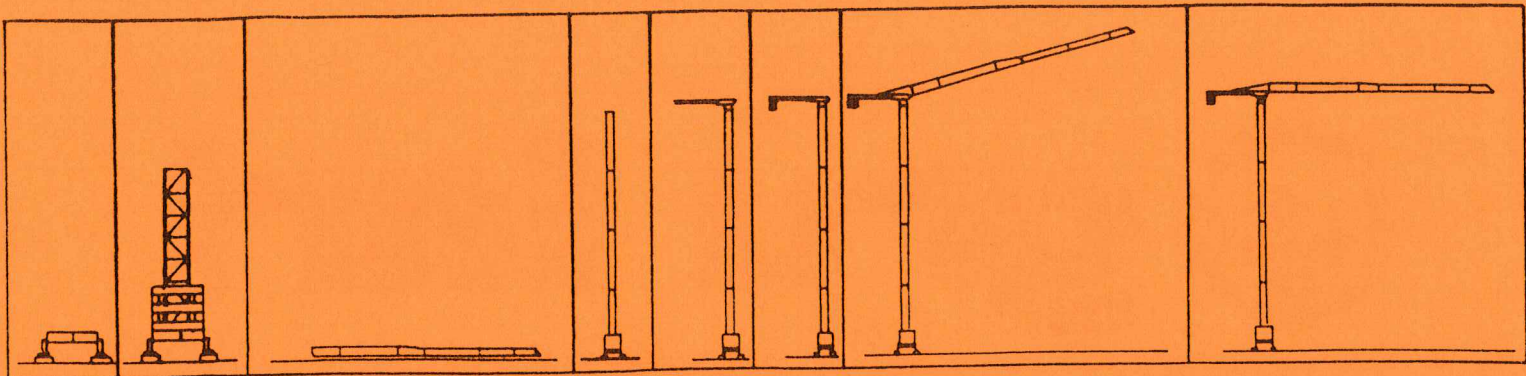


# gru fari



<b>SPEEDY TOWER CRANE</b>		
<b>SSM 48</b>		
VERSIONI BRACCIO (m)	PORTATE (Kg)	
50	1000 ÷ 5000	
48	1200 ÷ 5000	
45	1400 ÷ 5000	
40	1700 ÷ 5000	
Dimensione carro (m)	Altezza max. (m)	Lato torre (m)
3,5 X 3,5	31,5	1,14
4 X 4	36,75	1,14
4,5 X 4,5	43	1,14
6 X 6	56,5	1,74





**Meccanismi - Mechanisms - Mécanismes - Antriebe - Mecanismos**

				m min.	Kg.	HP	KW
Sollevamento Hoisting Levage Heben Elevación	<b>MS 15 SEP</b>		▽	6	2500	15	11
			▽	23	2000		
			▽	46	1000		
			▽	3	5000		
			▽	12	4000		
			▽	23	2000		
	<b>MS 25 SEP</b>		▽	8	2500	25	18,4
			▽	30	2500		
			▽	60	1500		
			▽	4	5000		
▽			15	5000			
▽			30	2500			

Distribuzione - Trolleying - Distribution - Katzfahren Distribución		▽	8		4	3
		▽	30			
		▽	60			

Rotazione - Slewing - Orientation - Schwenken Orientación		▽	0.2 giri min.	5,5	4
		▽	0.5 giri min.		
		▽	0.8 giri min.		

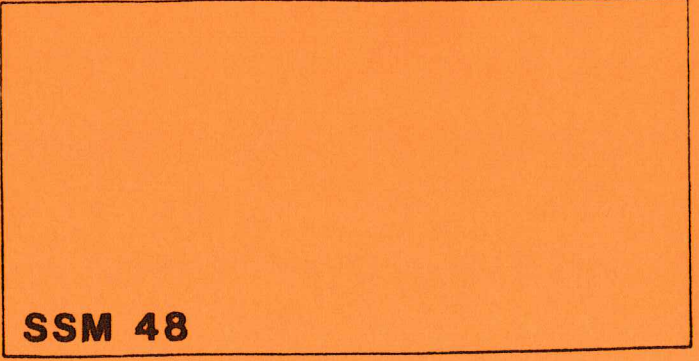
Traslazione - Travelling - Translation - Kranfahren - Tracción		▽	20		/	/
--	--	---	----	--	---	---

Rete elettrica - Mains supply - Réseau - Netzstrom - Red					400 V	50 Hz
--	--	--	--	--	-------	-------

Conforme alla direttiva CEE 87/405 sul livello acustico. In compliance with the EEC 87/405 instruction on noise level. Conforme à la directive CEE 87/405 sur le niveau acoustique. Gemäss EWG-Richtlinie 87/405 Schall-Leistungspegel. Conforme con la direttiva CEE 87/405 sobre el nivel acustico

# gru fari

**OFFICINE FARI SRL**  
 via Roma 192  
 36070 Castelgomberto (Vicenza) Italy  
 tel. 0445/940051 - fax 0445/941363



**SSM 48**

Modelli in costruzione - Modelli in vendita - Modelli in servizio - Modelli in magazzino