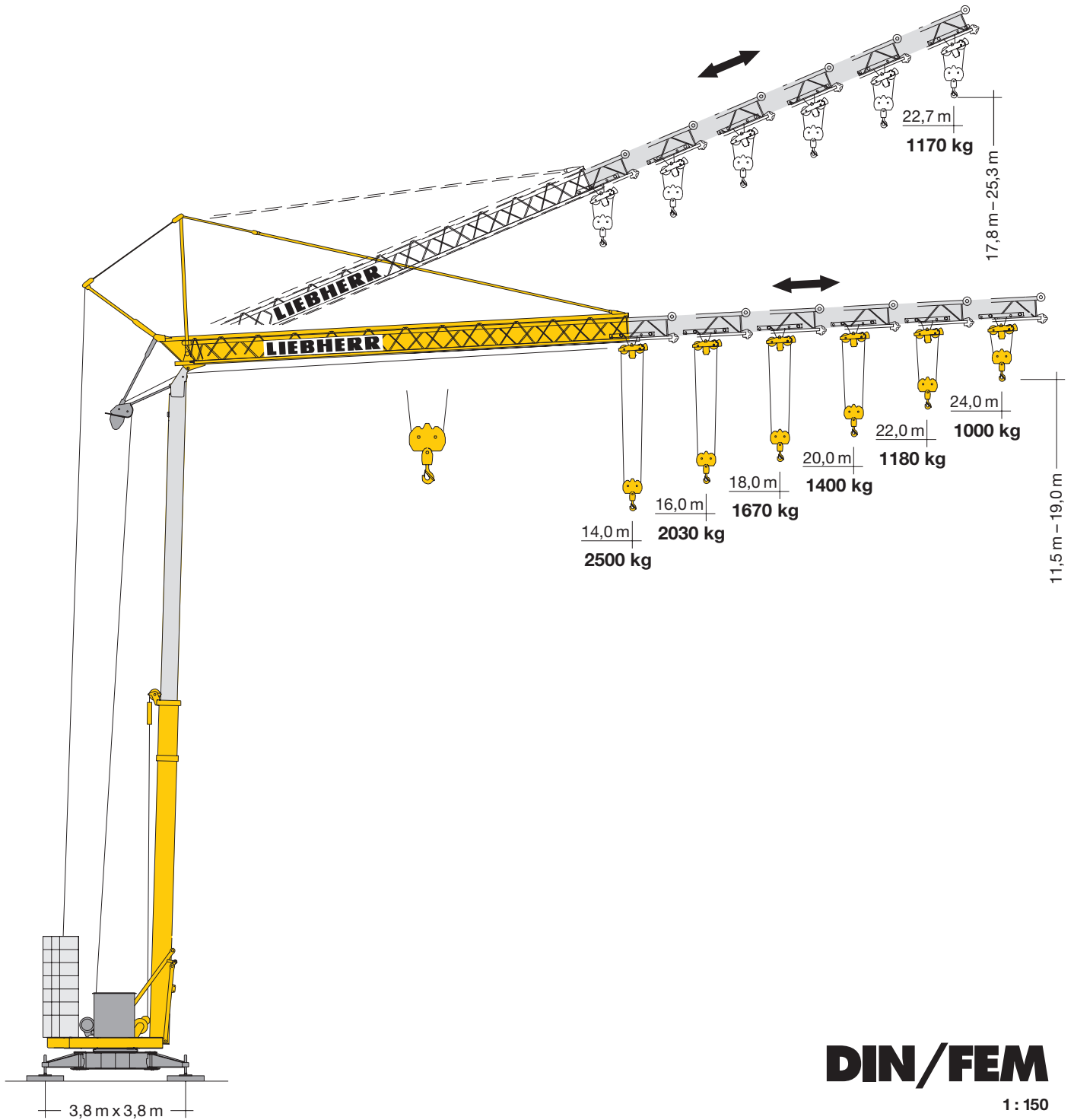


# Turmdrehkran

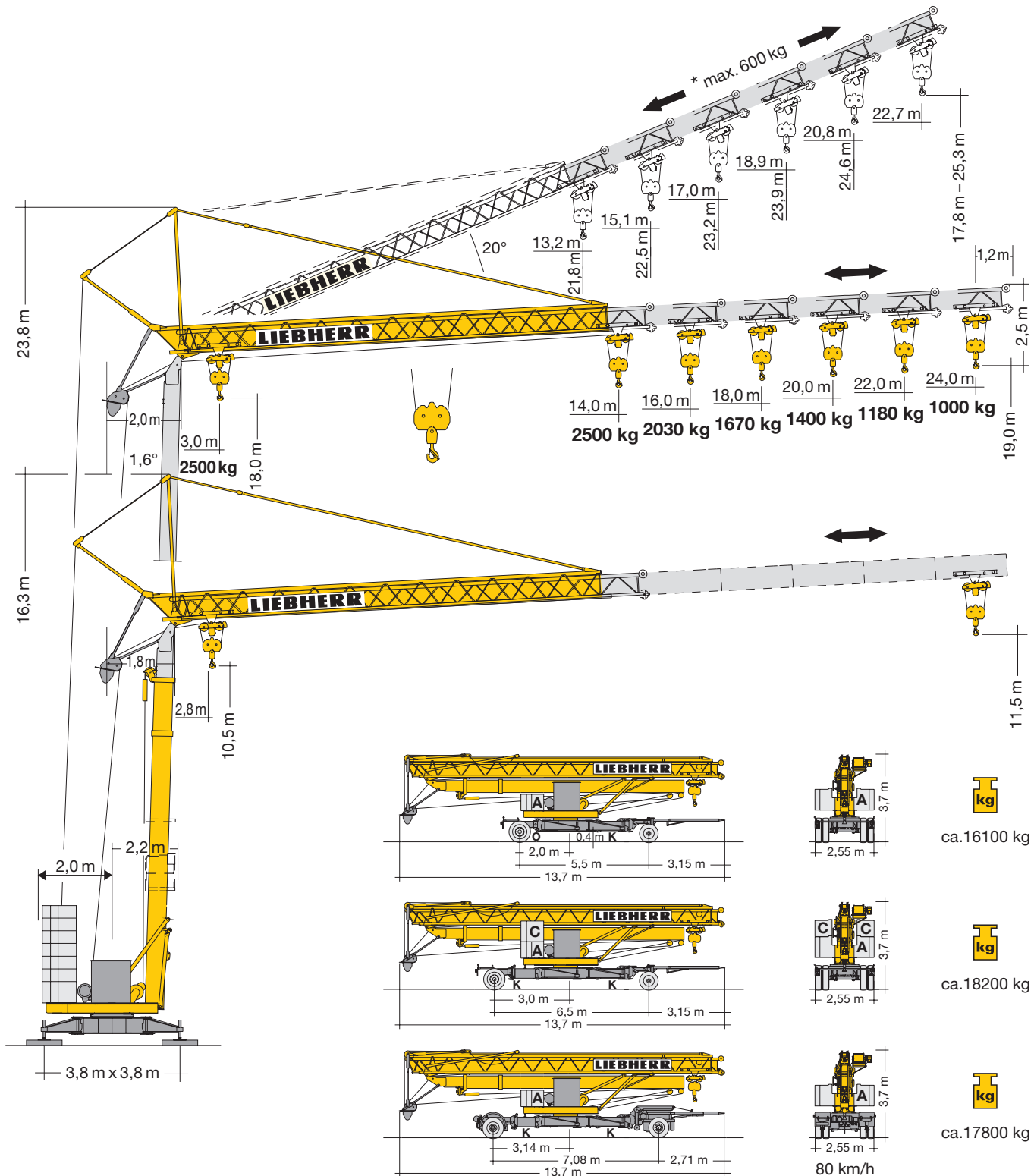
Tower Crane / Grue à tour / Gru a torre  
Grúa torre / Guindaste de torre

## 24 TT

24 - 35 mt



# LIEBHERR



## Gewicht

Weight / Poids / Peso / Peso / Pesos

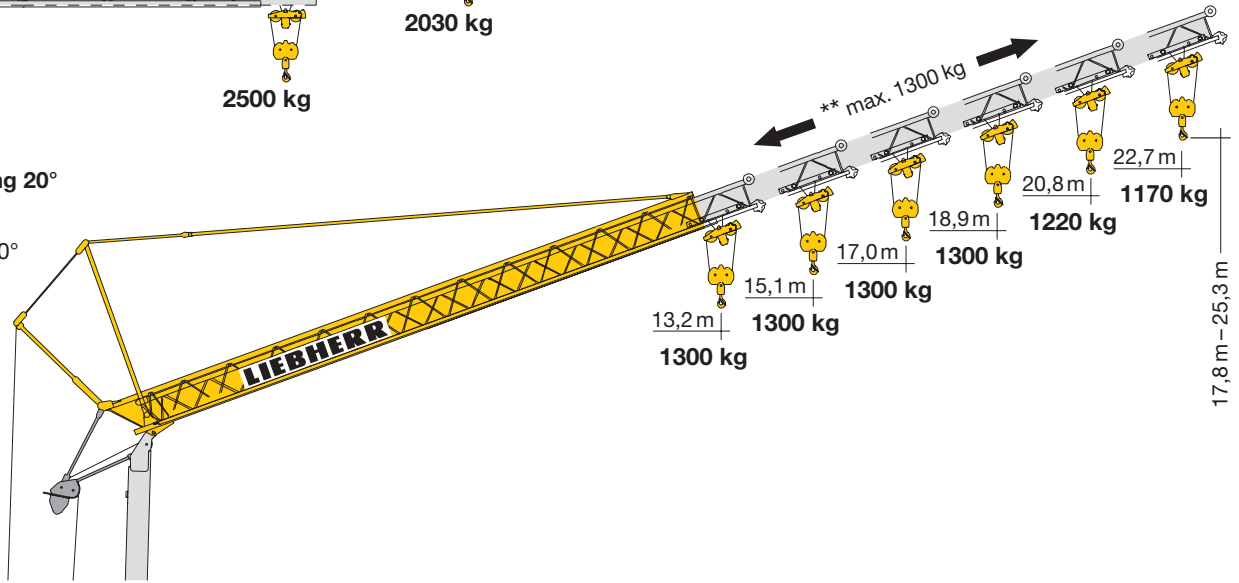
	1 x A = 4000 kg	14000 kg	r = 2,0 m		ca. 9800 kg
	6 x B = 10000 kg				
	1 x A + 2 x C = 5660 kg	14000 kg	r = 2,0 m		ca. 9800 kg
	5 x B = 8340 kg				

# Ausladung und Tragfähigkeit

Radius and capacity / Portée et charge / Sbraccio e portata / Alcances y cargas / Alcance e capacidade de carga

m	m/kg	m/kg												
		12,0	13,0	14,0	15,0	16,0	17,0	18,0	19,0	20,0	21,0	22,0	23,0	24,0
24,0	3,0 – 12,3 2500	2310		2090	1900	1740	1600	1480	1380	1290	1200	1130	1060	1000
22,0	3,0 – 12,7 2500	2410		2180	1980	1820	1670	1550	1440	1340	1260	1180		
20,0	3,0 – 13,0 2500	2500		2260	2060	1890	1740	1610	1500	1400				
18,0	3,0 – 13,3 2500	2500		2340	2130	1960	1800	1670						
16,0	3,0 – 13,7 2500	2500		2430	2210	2030								
14,0	3,0 – 14,0 2500	2500												

**Auslegersteilstellung 20°**  
 Elevated jib 20°  
 Flèche inclinée 20°  
 Braccio inclinato a 20°  
 Pluma inclinada 20°  
 Lança inclinada 20°



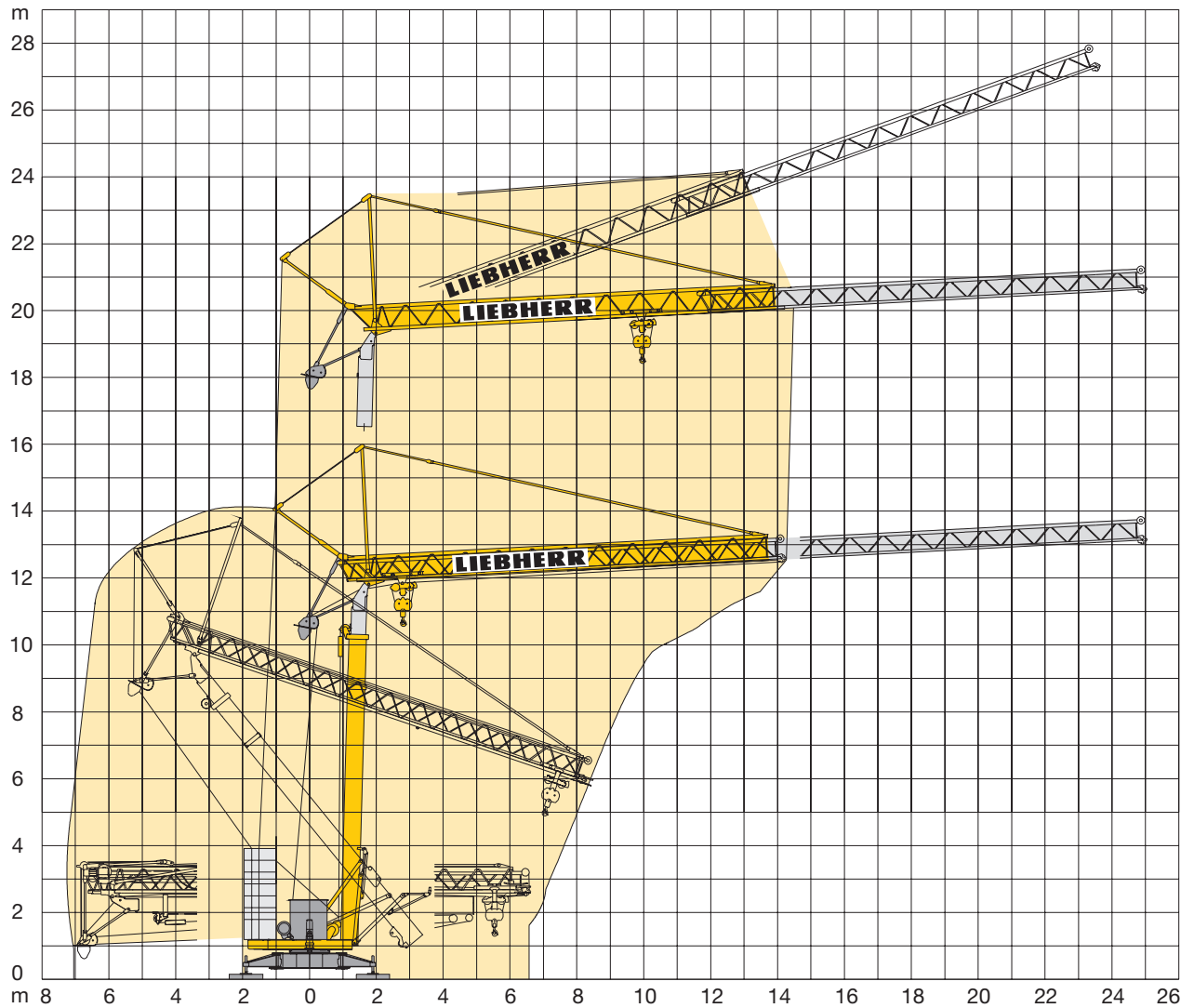
## Antriebe

Driving units / Mécanismes d'entraînement / Azionamenti / Mecanismos / Mecanismos

	U/min. 0 ↔ 0,8 sl./min tr./min	1,5 kW EDC
	20,0 / 40,0 m/min	1,8 / 3,5 kW 20° 2,8 / 3,5 kW 20°**
	10,0 m/min	1,8 kW 2,8 kW 20°
	4,0 m/min	5,0 kW

	Stufe / Step / Cran Marcia / Velocidad Velocidade	kg	m/min	
11,0 kW KL	1	2500	5,0	
	2	2500	20,0	
	3	1300	40,0	
11,0 kW FU	1	2500	4,0	
	2	2500	20,0	
	3	1300	38,0	
	4	1000	50,0	

400 V		Hz	kVA
55,0 m	4 x 6 mm <sup>2</sup> KL	50	20,0 KL
85,0 m	4 x 6 mm <sup>2</sup> FU		18,0 FU



## Kolli-Liste

Packing List / Liste de colisage / Lista dei colli / Lista de contenido / Lista de embalagem

Pos. Item Rep. Voce Pos. Ref.	Anz. Qty. Qte. Qta. Cant. Cant.		L (m)	B (m)	H (m)	kg	
1	1	<b>Transportachse vorne Tra 100 KY 2</b> Road transport axle front / Essieux de transport avant / Asse di trasporto anteriore / Eje delantero para transporte / Eixo de transporte dianteiro		4,10	1,42	1,10	750
2	1	<b>Transportachse hinten Tra 120 GY 1A</b> Road transport axle behind / Essieux de transport arrière / Asse di trasporto posteriore / Eje trasero para transporte / Eixo de transporte traseiro		1,70	2,50	1,10	1100
3	1	<b>Transportachse vorne Tra 115</b> Road transport axle front / Essieux de transport avant / Asse di trasporto anteriore / Eje delantero para transporte / Eixo de transporte dianteiro		4,10	2,50	1,32	1900
4	1	<b>Transportachse hinten Tra 117 GY 1A</b> Road transport axle behind / Essieux de transport arrière / Asse di trasporto posteriore / Eje trasero para transporte / Eixo de transporte traseiro		1,80	2,50	1,10	1500

### Konstruktionsänderungen vorbehalten!

Subject to alterations! / Sous réserves de modifications!  
 Si fa riserva di modifiche! / Salvo modificação da construoção!  
 ¡Sujeto a modificaciones!

### Sämtliche Angaben erfolgen ohne Gewähr. / This information is supplied without liability.

Ces renseignements sont sans garantie. / Le indicazioni contenute si intendono salvo errori ed omissioni.  
 Declinamos toda responsabilidad derivada de la información proporcionada.  
 Declinamos qualquer responsabilidade quanto à informação fornecida.