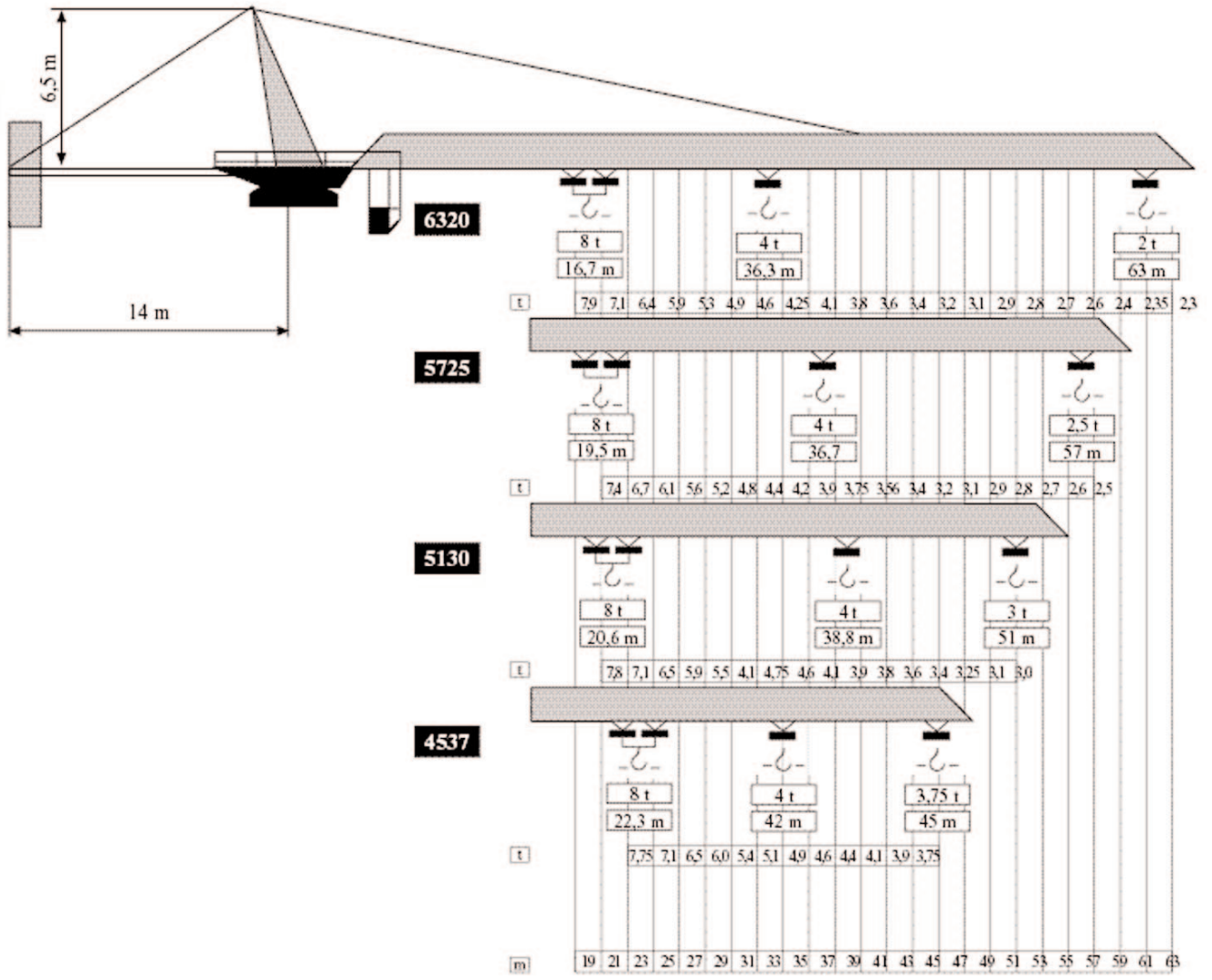


TGC 63-2000 1,96

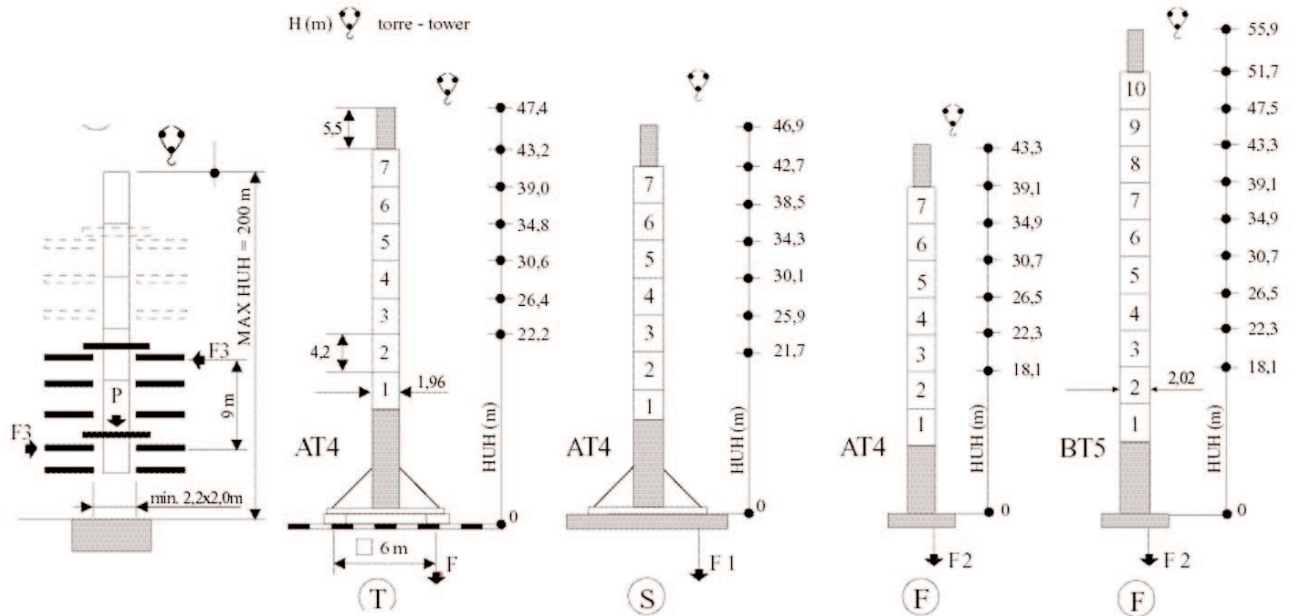
LINEA GC PEINER SYSTEM MOD:

TERRELLI

GRU A TORRE PER L'EDILIZIA



ALTEZZA MASSIMA CON ANCORAGGI MT. 200.



	PESO TOTALE GRU A LA MASSIMA ALTEZZA CRANE TOTAL WEIGHT AT MAX FREE STANDING HEIGHT	TON
AT4 (T)	TRASLANTE TRAVELLING	60
AT4 (S)	APPOGGIATA STATIONARY	57
AT4 (F)	FISSA FIXED ON PLINTH	48
BT5		66
AT4 (C)	RAMPANTE CLIMBING	39

380 V 50 HZ	ARGANO WINCH	POTENZA MAX MAIN SUPPLY	GRUPPO GEN. GEN.
	33 HP	44 KVA	85 KVA
	50 HP	65 KVA	100 KVA

	F	F1	F2	F3
AT4	71	52	113	44
BT5	-	-	150	52

	HP 33	HP 50	Kg
HP 33	60,0	90/70	2000
HP 50	30,0	45/17	4000
HP 33-50	5,0	4,0	4000
HP 33-50	30,0	45/36	4000
HP 33-50	15,0	22,5/8	8000
HP 33-50	2,5	2,0	8000

	RCO	0,7 rpm	3x6,5 Kgm
	RCO	0-50 m/min	6,5 kgm 3,5 HP
	M 125	25 m/min	2x5,5 HP

F - Forze massime in 1
Forze calcolate con vento fuori servizio a 37 m/s

Max force in 1
Forces calculated with wind out of service at 37 m/s