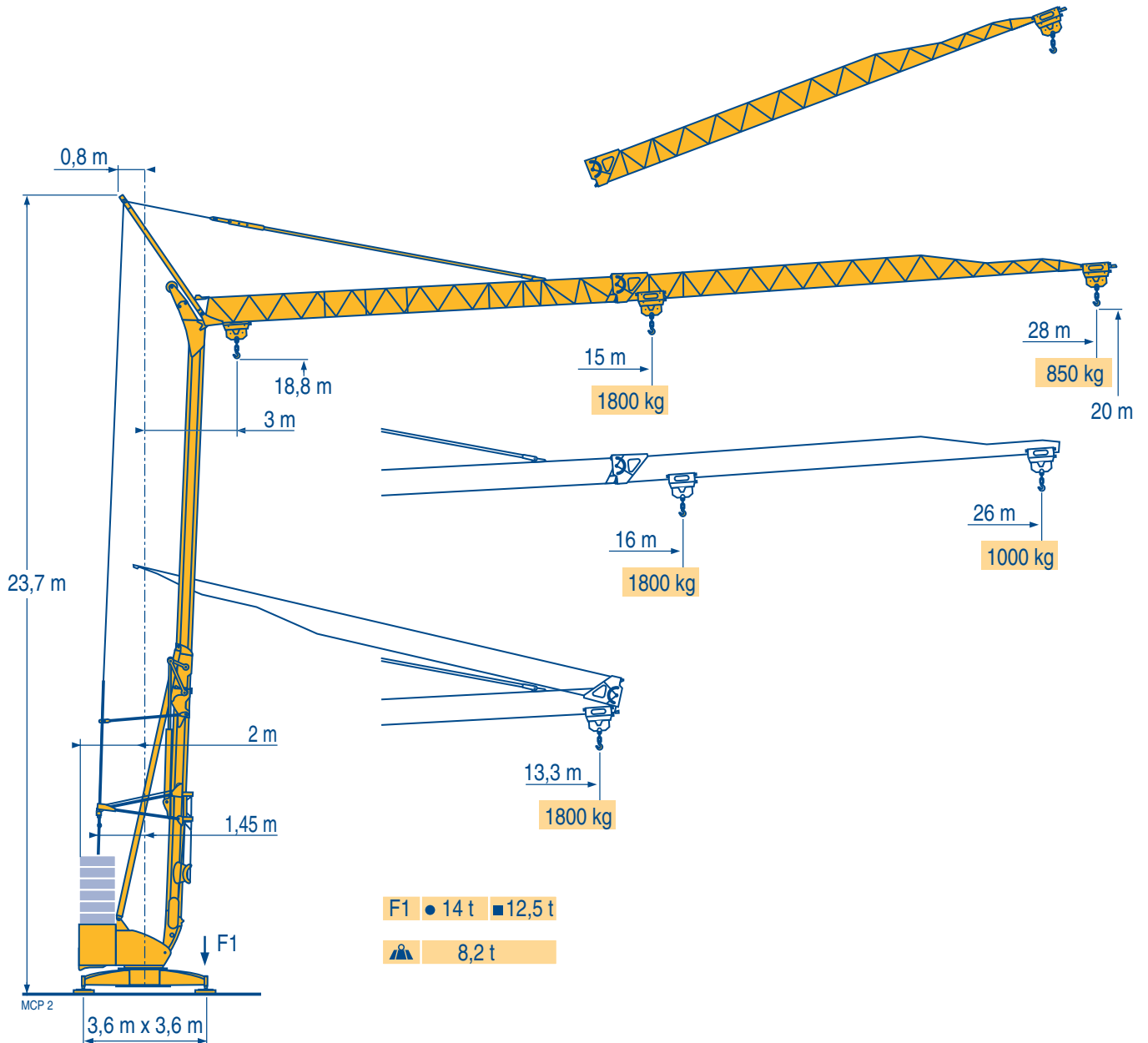
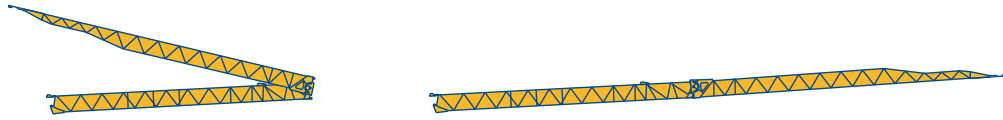


Igo 22



Courbes de charges
Lastkurven
Load diagrams
Curvas de cargas
Curve di carico
Curva de cargas

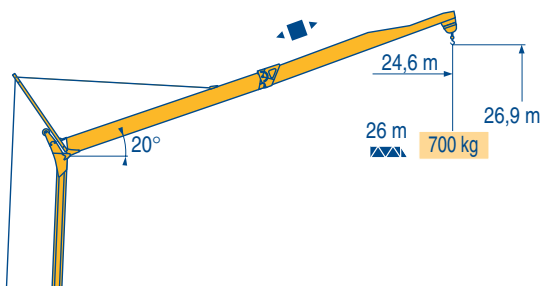
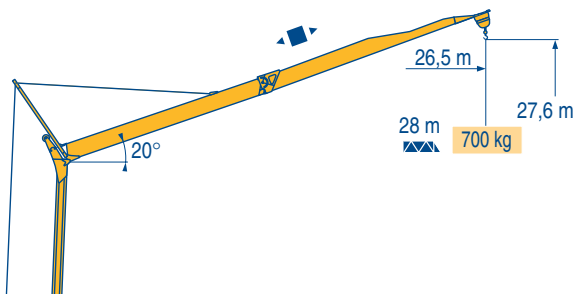


MCP 2

28 m	3	▶	13,3 m	15	16	17	18	19	20	21	22	23	24	25	26	27	28	m
	1800 kg			1800	1670	1555	1450	1360	1275	1205	1140	1080	1025	975	930	890	850	kg
26 m	3	▶	13,3 m	16	17	18	19	20	21	22	23	24	25	26	m			
	1800 kg			1800	1665	1555	1455	1370	1290	1220	1160	1100	1050	1000	kg			

Flèche relevée
Ausleger in Steilstellung
Luffing jib
Flecha izada
Braccio impennato
Lança inclinada

MCP 1



Igo 22

POTAIN



F

Chariot distributeur
Réactions en service
Réactions hors service
A vide sans lest (ni train de transport) avec flèche et hauteur maximum.

D

Verfahrbare Laufkatze
Reaktionskräfte in Betrieb
Reaktionskräfte außer Betrieb
Ohne Last, Ballast (und Transportachse), mit Maximalausleger und Maximalhöhe.

GB

Traversing trolley
Reactions in service
Reactions out of service
Without load, ballast (or transport axes), with maximum jib and maximum height.

E

Carro distribuidor
Reacciones en servicio
Reacciones fuera de servicio
Sin carga, sin lastre, (ni tren de transporte), flecha y altura máxima.

I

Carrellino distributore
Reazioni in servizio
Reazioni fuori servizio
A vuoto, senza zavorra (ne assali di trasporto) con braccio massimo e altezza massima.

P

Carro distribuidor
Reações em serviço
Reações fora de serviço
Sem carga (nem trem de transporte)- sem lastro com lança e altura máximas.

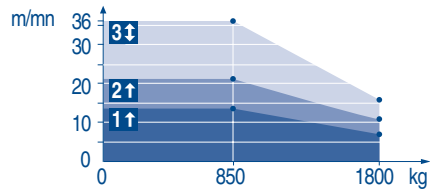
Mécanismes
Antriebe
Mechanisms
Mecanismos
Meccanismi
Mecanismos

MCP 2

				🐢		🐌		🐕		ch - PS hp	kW		
▲ ▼	8 LVF 9 Optima	230 V /// 20 A 1	m/min	↑ 3,5	↓ 3,5	↑ 7	↓ 16	↑ 14	↓ 36	3,3	2,4		
			kg	1800		1800		850					
		230 V /// 32 A 2	m/min	↑ 3,5	↓ 3,5	↑ 11	↓ 16	↑ 21	↓ 36				
			kg	1800		1800		850		5,2	3,8		
		400 V 3	m/min	↓ 3,5		↓ 16		↓ 36		7,5	5,5		
			kg	1800		1800		850					
◀ ▶	1 DVF 4	-	m/min	14 → 36 (0 → 850 kg) - 14 → 28 (850 → 1800 kg)								1,5	1,1
🌀	RVF 31	-	tr/min U/min rpm	0 → 0,8								2	1,5

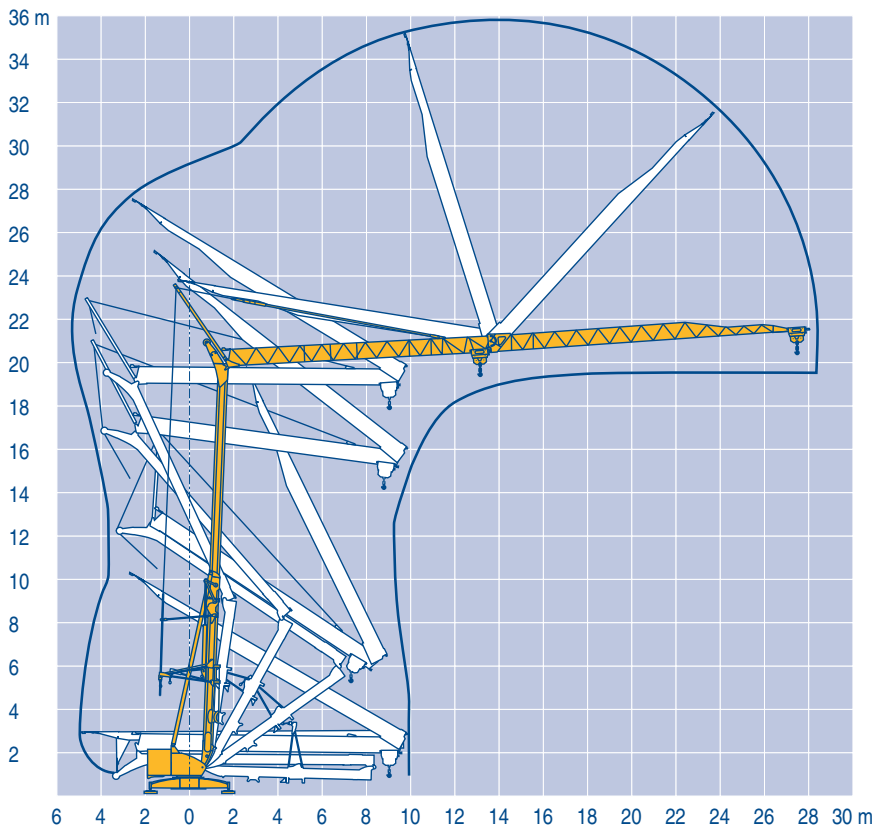
CEI 38	IEC 38	kVA	🎧
230 V(+6% -10%) 50 Hz - 60 HZ /// 400 V(+6% -10%) 50 Hz 480 V(+6% -10%) 60 Hz		230 V 20 A : 4,6 kVA 230 V 32 A : 7,4 kVA 400 V : 11 kVA 480 V : 11 kVA	2000/14

8 LVF 9
Optima



Montage
Montage
Erection
Montaje
Montaggio
Montagem

MCP 1



Igo 22

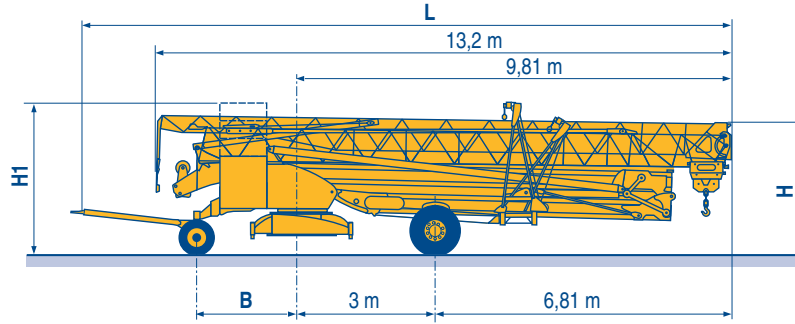
POTAIN

F	D	GB	E	I	P
Levage	Heben	Hoisting	Elevación	Sollevamento	Elevação
Distribution	Katzfahren	Trolleying	Distribución	Distribuzione	Distribuição
Orientation	Schwenken	Slewing	Orientación	Rotazione	Rotação
50 Hz Monophasé	50 Hz Einphasige	50 Hz Single phase	50 Hz Monofasica	50 Hz Monofase	50 Hz monofásica
Conforme aux directives CEE sur le niveau acoustique	Gemäss EWG-Richtlinien für den Schall-Leistungspegel	In compliance with the EEC Instructions on noise level	Conforme con las directivas CEE sobre el nivel acustico	Conforme alle direttive CEE sul livello acustico	Conforme as directivas CEE sobre o nível acústico

Transport
Transport
Transport
Transporte
Trasporto
Transporte

MCP 2

- DS51/S70 ○
- DS61/S80 ○
- DS61/S120 ○
- DS61/S125 ○
- DJ80/S120 ○
- DJ80/S125 ○
- DJ100/S120 ○
- DJ105/S125 ○
- DJ126M/S125 ○



	L (m)	B (m)	H (m)	H1 (m)
DS51/S70	14,48	2,35	3,03/3,18	-
DS61/S80	14,77	2,45	3,18	-
DS61/S120	14,77	2,45	3,03/3,18	-
DS61/S125	14,77	2,45	3,03/3,18	-
DJ80/S120	14,77	2,45	3,05/3,20	-
DJ80/S125	14,77	2,45	3,05/3,20	-
DJ100/S120	14,77	2,45	3,05/3,20	3,21/3,36
DJ105/S125	14,77	2,45	3,05/3,20	3,21/3,36
DJ126M/S125	14,77	2,45	3,20	3,34

- **F**
Chantier
- D**
Baustelle
- GB**
Site
- E**
Obra
- I**
Cantiere
- P**
Estaleiro

Document commercial non contractuel. Pour toute information technique se référer à la notice correspondante

Unverbindliches Vertriebsdokument. Für technische Informationen, siehe die entsprechenden Anweisungen.

This commercial document is not legally binding. For any technical information, please refer to the corresponding instructions.

Documento commercial no contractual. Para cualquier información técnica, ver la noticia correspondiente.

Documento commerciale non vincolante. Per tutte le informazioni tecniche fare riferimento al catalogo istruzioni

Documento comercial não contractual. Para qualquer informação técnica complementar consultar as respectivas instruções



18, rue de Charbonnières - B.P.173
69132 ECULLY Cedex - France

Tél. : (33) 4 72 18 20 20
Fax. : (33) 4 72 18 20 00
www.manitowoccrane.com www.potain.com



Americas

Tel: +1 920 683 6322
Tel: +1 717 597 8121

Europe - Middle East - Africa

Tel : +(33) 4 72 81 50 00
Tel : +(44) 191 565 6281

Asia - Pacific

Tel: +(65) 6861 7133
Fax: +(65) 6862 4142

www.manitowoccrane.com

Igo 22

Réf. 2005 05 MCP 3

Copyright.Reproduction interdite © POTAIN 2005

Réalisation Sedoc