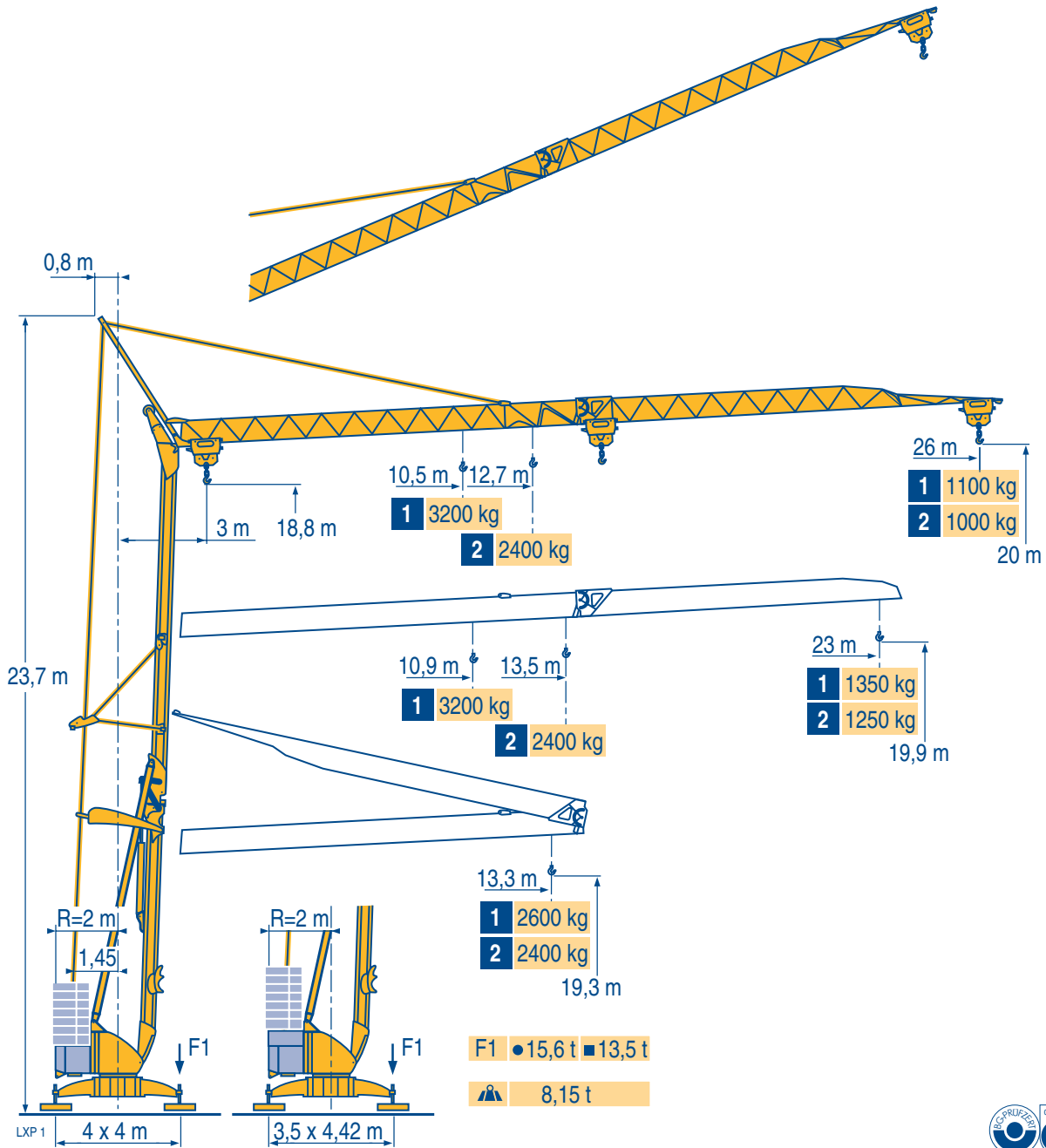
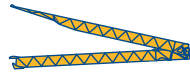


## Igo 26



Courbes de charges  
Lastkurven  
Load diagrams  
Curvas de cargas  
Curve di carico  
Curva de cargas



1 3200 kg

26 m 3 ▶ 11,3 12 13,3 m  
3200 2960 2600 kg



23 m 3 ▶ 11,3 12 13,3 m  
3200 2960 2600 kg



2 2400 kg

26 m 3 ▶ 13,3 m  
2400 kg

23 m 3 ▶ 13,3 m  
2400 kg

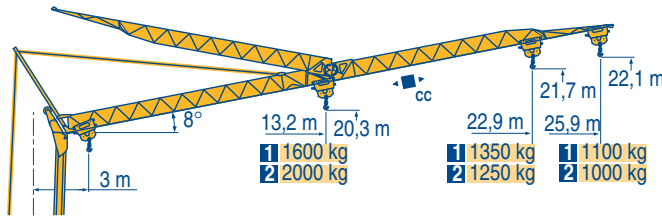
10,5 11 12 13 14 15 16 17 18 19 20 21 22 23 24 25 26 m  
3200 2990 2680 2420 2200 2020 1860 1725 1605 1495 1405 1320 1240 1175 1110 1055 1000 kg  
1600 1515 1425 1350 1275 1215 1155 1100 kg

10,9 11 12 13 14 15 16 17 18 19 20 21 22 23 m  
3200 3170 2840 2565 2335 2140 1975 1830 1705 1590 1495 1405 1325 1250 kg  
1600 1505 1425 1350 kg

12,7 13 14 15 16 17 18 19 20 21 22 23 24 25 26 m  
2400 2340 2130 1960 1810 1680 1570 1470 1380 1300 1230 1165 1105 1050 1000 kg

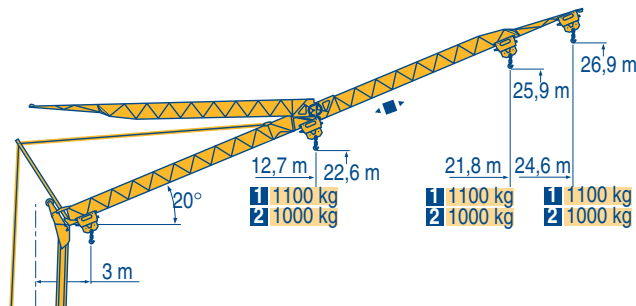
13,5 14 15 16 17 18 19 20 21 22 23 m  
2400 2285 2100 1940 1805 1685 1575 1480 1395 1320 1250 kg

Flèche relevée  
Ausleger in Steilstellung  
Luffing jib  
Flecha izada  
Braccio impennato  
Lança inclinada



1 26 m 3 ▶ 18 19 20 21 22 23 24 25 25,9 m  
1600 1490 1395 1310 1235 1165 1105 1045 1000 kg  
1600 1510 1420 1340 1270 1210 1150 1100 kg  
23 m 3 ▶ 18,9 19 19,9 20 21 22 22,9 m  
1600 1585 - 1485 1395 1315 1250 kg  
1600 1590 1500 1415 1350 kg

2 26 m 3 ▶ 14,7 16 19 21 22 23 24 25 25,9 m  
2000 1800 1460 1295 1225 1160 1100 1045 1000 kg  
23 m 3 ▶ 15,5 16 19 20 21 22 22,9 m  
2000 1930 1570 1475 1390 1310 1250 kg



1 26 m 3 ▶ 24,6 m  
1000 kg  
1100 kg

23 m 3 ▶ 21,8 m  
1000 kg  
1100 kg

2 26 m 3 ▶ 24,6 m  
1000 kg  
23 m 3 ▶ 21,8 m  
1000 kg

Igo 26



F Chariot distributeur



CC Chariot distributeur et courbes de charges



● Réactions en service



■ Réactions hors service



🚧 A vide sans lest (ni train de transport) avec flèche et hauteur maximum.



D Verfahrbare Laufkatze

Verfahrbare Laufkatze und Lastkurven

Reaktionskräfte in Betrieb

Reaktionskräfte außer Betrieb

Ohne Last, Ballast (und Transportachse), mit Maximalausleger und Maximalhöhe.



GB Traversing trolley

Traversing trolley and load diagrams

Reactions in service

Reactions out of service

Without load, ballast (or transport axes), with maximum jib and maximum height.



E Carro distribuidor

Carro distribuidor y curvas de cargas

Reacciones en servicio

Reacciones fuera de servicio

Sin carga, sin lastre, (ni tren de transporte), flecha y altura máxima.



I Carrellino distributore

Carrellino distributore e curve di carico

Reazioni in servizio

Reazioni fuori servizio

A vuoto, senza zavorra (ne assali di trasporto) con braccio massimo e altezza massima.



P Carro distribuidor

Carro distribuidor e curva de cargas

Reações em serviço

Reações fora de serviço

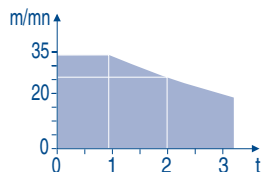
Sem carga (nem trem de transporte)- sem lastro com lança e altura máximas.

Mécanismes  
Antriebe  
Mechanisms  
Mecanismos  
Meccanismi  
Mecanismos

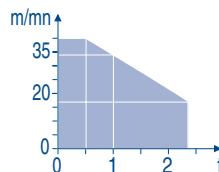
LXP 1

												ch - PS hp	kW	
	15 LVF 10 Optima	m/min	3,6	18	37	49	66						15	11
		kg	1600	1600	1600	1100	500							
	3 DVF5	m/min	3,6	18	37	54	66	1,8	9	19	27	33	3	2,2
		kg	1600	1600	1600	1000	500	3200	3200	3200	2000	1000		
	10 LVF 12 Optima	m/min	2	10	17	34	40						10	7,5
		kg	2400	2400	2400	1000	500							
	2 DVF5	m/min	15 - 38 (0 → 1000 kg)				15 - 30 (1000 → 2400 kg)				2	1,5		
	RVF2	tr/min U/min rpm	0 → 0,8									2	1,5	
CEI 38		IEC 38		kVA										
400 V (+6% -10%) 50 Hz		15 LVF 10 : 20 kVA 10 LVF 12 : 14 kVA			2000/14									

15 LVF 10  
Optima

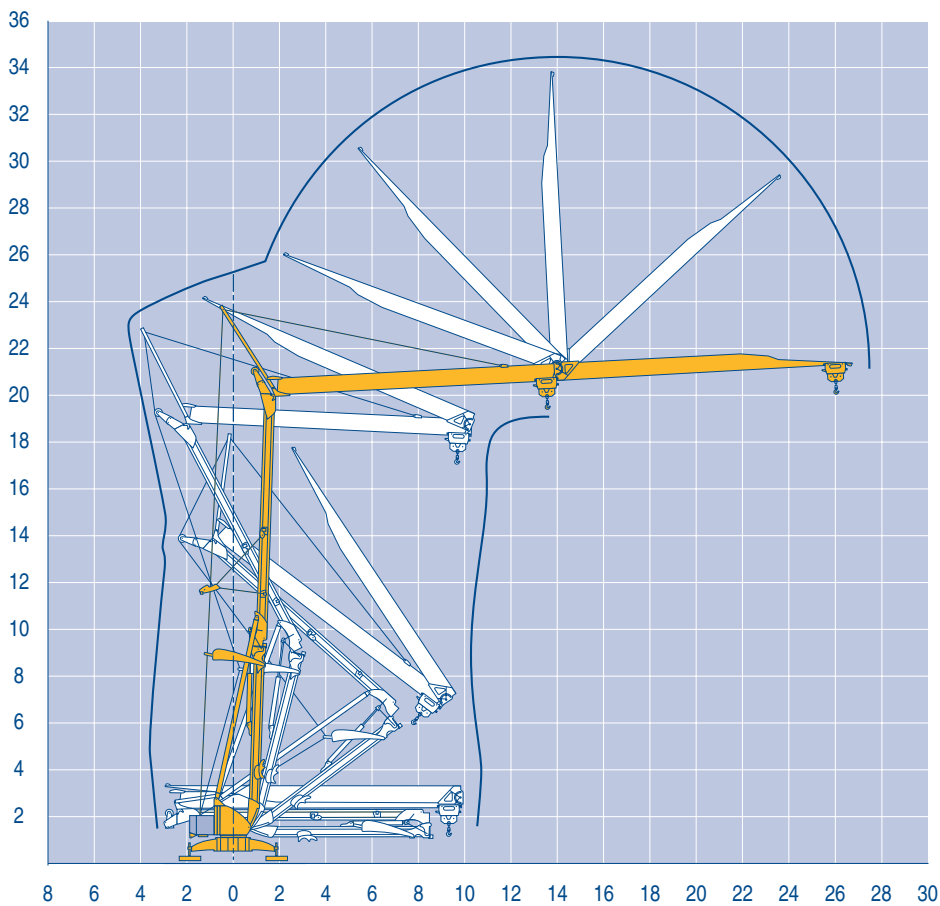


10 LVF 12  
Optima



Montage  
Montage  
Erection  
Montaje  
Montaggio  
Montagem

LXP 1



Igo 26

POTAIN



**F**

Levage  
Distribution  
Orientation

Conforme aux directives CEE  
sur le niveau acoustique

**D**

Heben  
Katzfahren  
Schwenken

Gemäss EWG-Richtlinien für  
den Schall-Leistungspegel

**GB**

Hoisting  
Trolleying  
Slewing

In compliance with the EEC  
Instructions on noise level

**E**

Elevación  
Distribución  
Orientación

Conforme con las directivas  
CEE sobre el nivel acústico

**I**

Sollevamento  
Distribuzione  
Rotazione

Conforme alle direttive CEE  
sul livello acustico

**P**

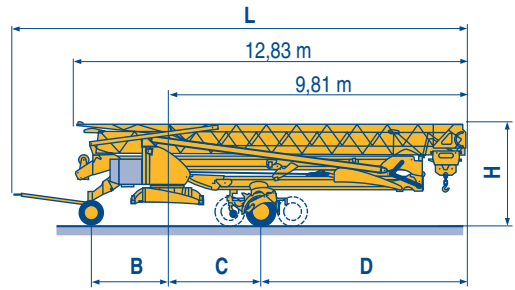
Elevação  
Distribuição  
Rotação

Conforme as directivas CEE  
sobre o nível acústico

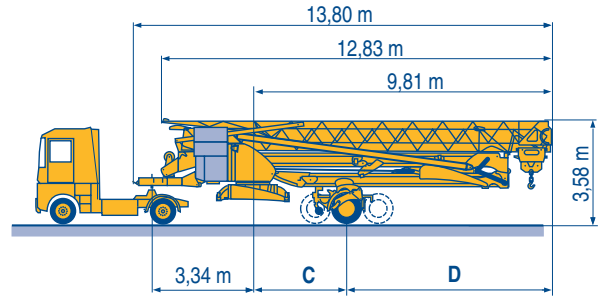
Transport  
Transport  
Transporte  
Trasporto  
Transporte

LXP 2

		L (m)	B (m)	C (m)	D (m)	H (m)
DS61/S120	○					
DS61/S125	DS61/S120	14,9	2,45	3	6,81	3,05/3,2
DJ80/S120	○					
DJ80/S125	DJ80/S120	14,9	2,45	3	6,81	3,1
DJ100/S120	DJ80/S125	14,9	2,45	3	6,81	3,1
DJ105/S125	DJ100/S120	15,33	2,45	3	6,81	3,1/3,23
DJ126M/S125	DJ105/S125	15,35	2,45	3	6,81	3,2
DJ126M/S215M	DJ126M/S215M	16,14	3,24	5,37	4,44	3,55



		C (m)	D (m)
SL122/J215M			
SL121/J135	SL122/J215M	5,37	4,44
SL121/S215M	SL121/J135	3	6,81
	SL121/S215M	5,37	4,44



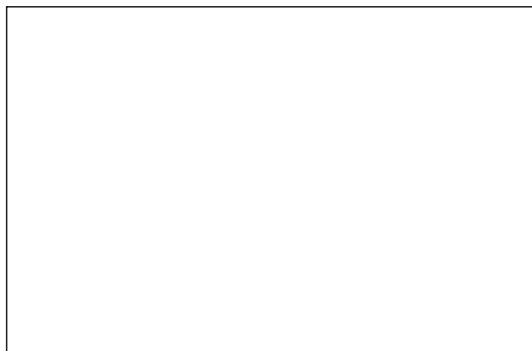
○	F	D	GB	E	I	P
	Chantier	Baustelle	Site	Obra	Cantiere	Estaleiro

Document commercial non contractuel. Pour toute information technique se référer à la notice correspondante. Unverbindliches Vertriebsdokument. Für technische Informationen, siehe die entsprechenden Anweisungen. This commercial document is not legally binding. For any technical information, please refer to the corresponding instructions. Documento comercial no contractual. Para cualquier información técnica, ver la noticia correspondiente. Documento commerciale non vincolante. Per tutte le informazioni tecniche fare riferimento al catalogo istruzioni. Documento comercial não vincolante. Para qualquer informação técnica complementar consultar as respectivas instruções.



18, rue de Charbonnières - B.P.173  
69132 ECULLY Cedex - France

Tél. : (33) 4 72 18 20 20  
Fax. : (33) 4 72 18 20 00  
www.manitowoccrane.com www.potain.com



**Americas**  
Tel: +1 920 683 6322  
Tel: +1 717 597 8121

**Europe - Middle East - Africa**  
Tel : +(33) 4 72 81 50 00  
Tel : +(44) 191 565 6281

**Asia - Pacific**  
Tel: +(65) 6861 7133  
Fax: +(65) 6862 4142

www.manitowoccrane.com

**Igo 26**  
Réf. 2003 48 LXP 2

Copyright.Reproduction interdite © POTAIN 2003

Réalisation HeadLines