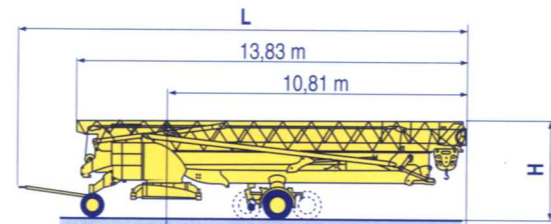


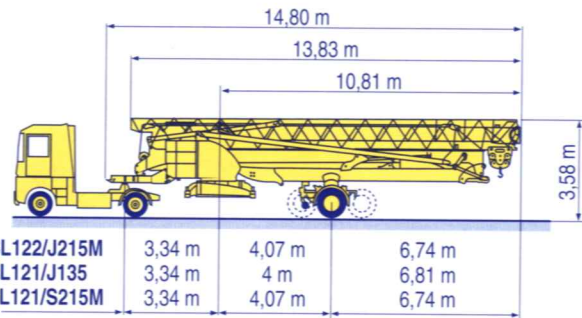
Transport
Transport
Transport
Transporte
Trasporto
Transporte

- DS61/S120 ○
- DS61/S125 ○
- DJ80/S120 ○
- DJ80/S125 ○
- DS95/S125 ○
- DJ126M/S125 ○
- DJ126M/S215M ○



				H	L
DS61/S120	2,45 m	4 m	6,81 m	3,05/3,20 m	15,90 m
DS61/S125	2,45 m	4 m	6,81 m	3,05/3,20 m	15,90 m
DJ80/S120	2,45 m	4 m	6,81 m	3,10 m	15,90 m
DJ80/S125	2,45 m	4 m	6,81 m	3,10 m	15,90 m
DS95/S125	2,45 m	4 m	6,81 m	3,10/3,23 m	16,33 m
DJ126M/S125	2,45 m	4 m	6,81 m	3,20 m	16,35 m
DJ126M/S215M	3,24 m	4,07 m	6,74 m	3,55 m	17,14 m

- SL122/J215M ○
- SL121/J135 ○
- SL121/S215M ○



SL122/J215M	3,34 m	4,07 m	6,74 m
SL121/J135	3,34 m	4 m	6,81 m
SL121/S215M	3,34 m	4,07 m	6,74 m

	F	D	GB	E	I	P
○	Chantier	Baustelle	Site	Obra	Cantiere	Estaleiro



Document commercial non contractuel. Pour toute information technique se référer à la notice correspondante

Unverbindliches Vertriebsdokument. Für technische Informationen, siehe die entsprechenden Anweisungen.

This commercial document is not legally binding. For any technical information, please refer to the corresponding instructions.

Documento comercial no contractual. Para cualquier información técnica, ver la noticia correspondiente.

Documento commerciale non vincolante, per tutte le informazioni tecniche fare riferimento al catalogo istruzioni

Documento comercial não contractual. Para qualquer informação técnica complementar consultar as respectivas instruções



18, rue de Charbonnières - B.P.173
69132 ECULLY Cedex - France
Tél. : (33) 4 72 18 20 20
Fax. : (33) 4 72 18 20 00
www.manitowoccrane.com www.potain.com

Americas
Tel: +1 920 683 6322
Tel: +1 717 597 8121

Europe - Middle East - Africa
Tel: +(33) 4 72 81 50 00
Tel: +(44) 191 565 6281

Asia - Pacific
Tel: +(65) 6861 7133
Fax: +(65) 6862 4142

www.manitowoccrane.com

Igo 28 A

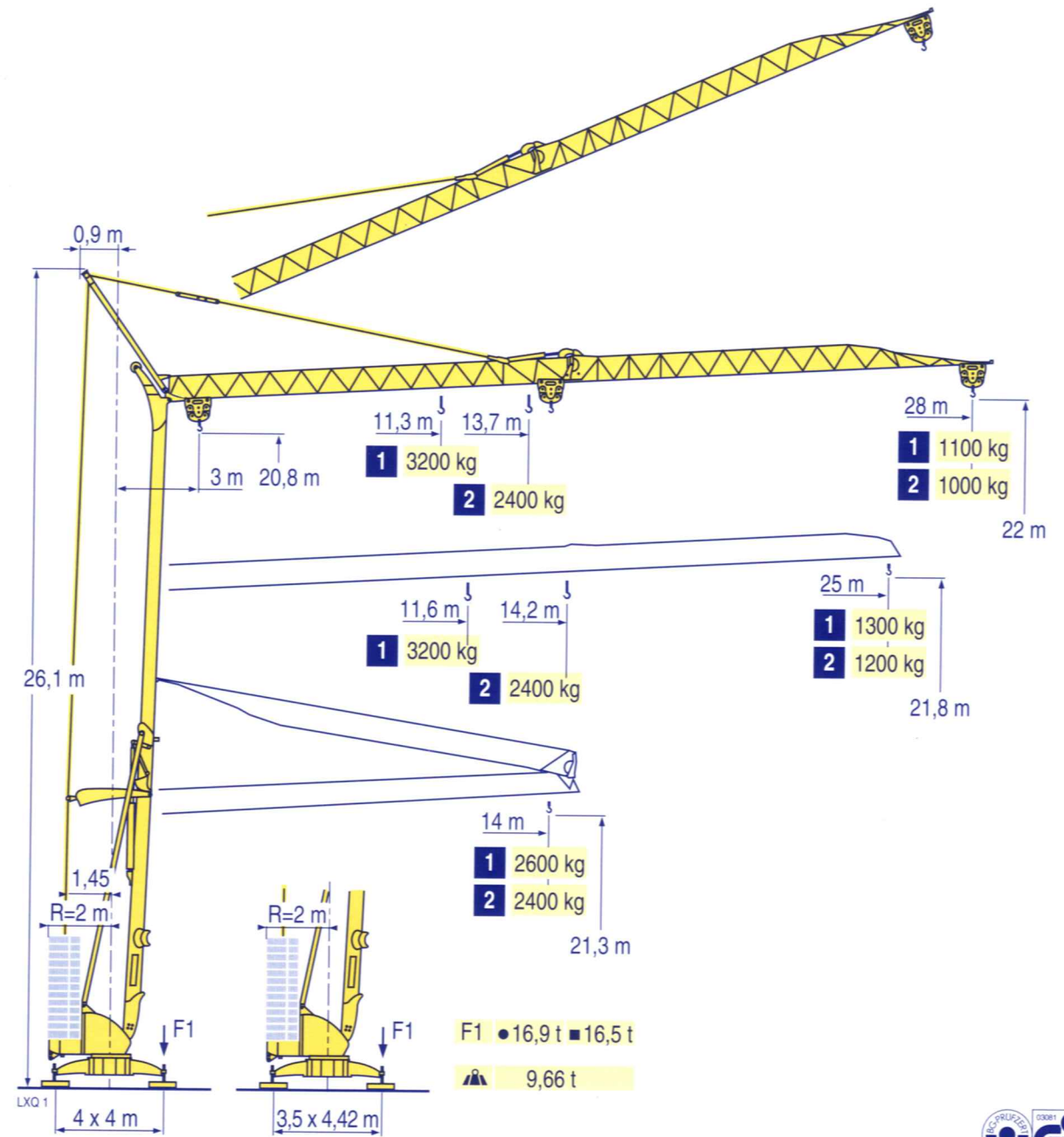
Réf. 2003 48 LXQ 1

Copyright.Reproduction interdite © POTAIN 2003

Réalisation HeadLines

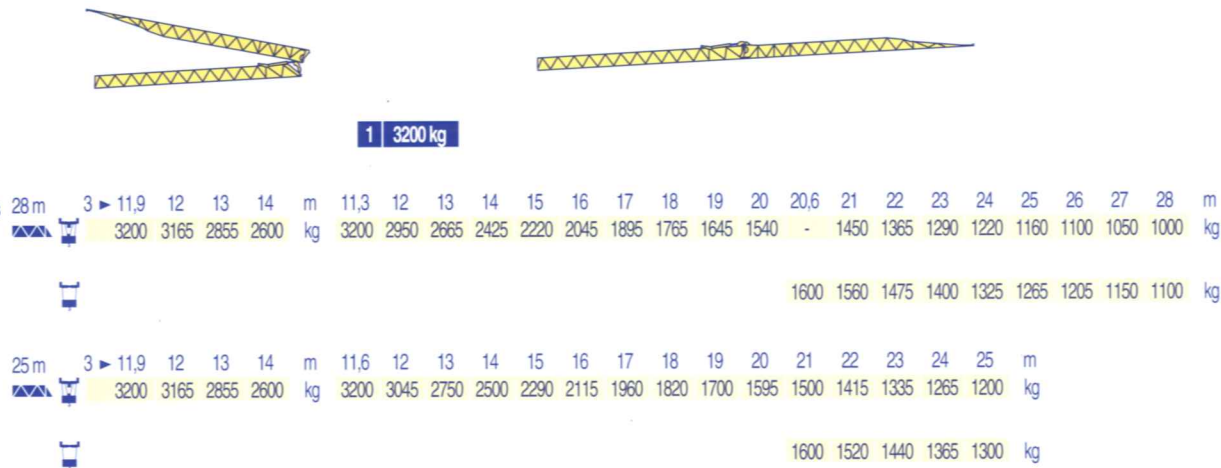
POTAIN

Igo 28 A

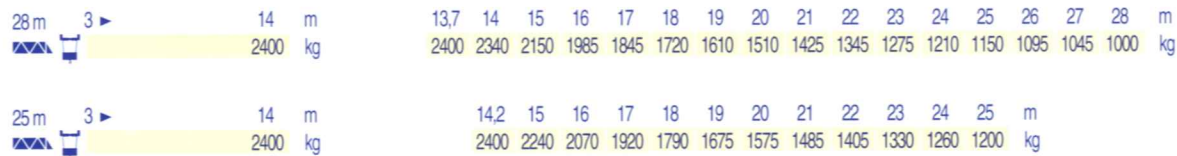


Above. Beyond. Everywhere.™

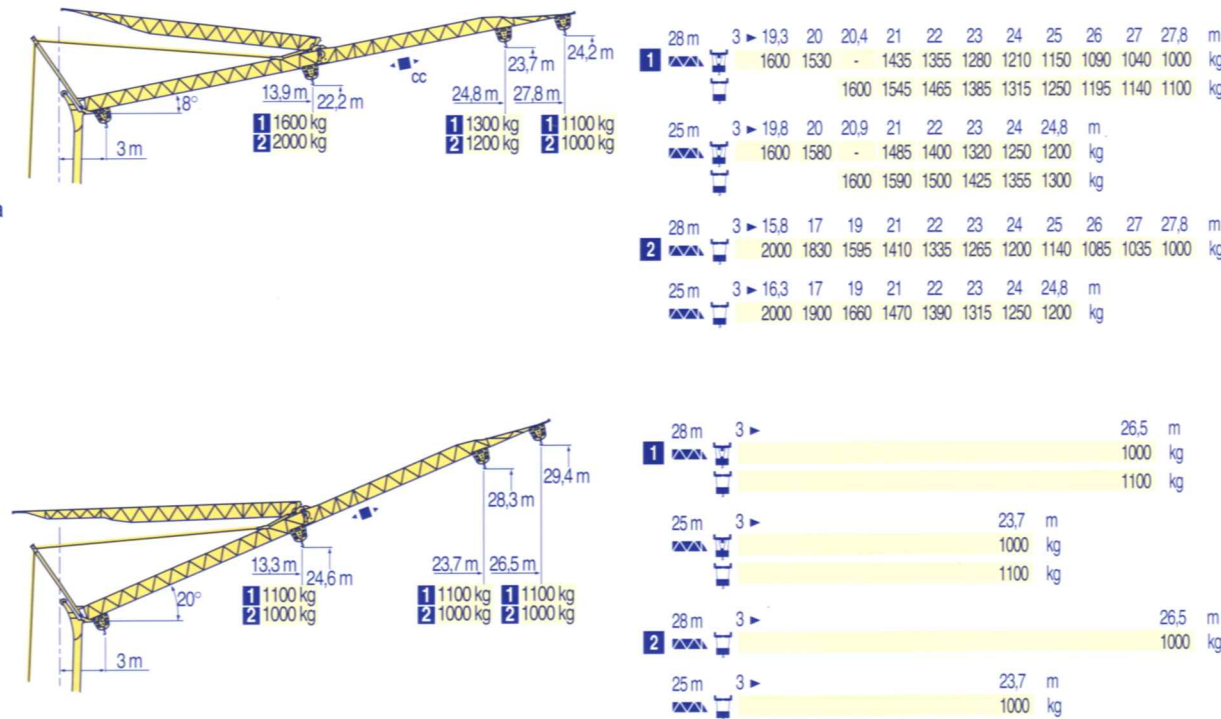
Courbes de charges
Lastkurven
Load diagrams
Curvas de cargas
Curve di carico
Curva de cargas



2 2400 kg



Flèche relevée
Ausleger in Steilstellung
Luffing jib
Flecha izada
Braccio impennato
Lança inclinada



Igo 28 A



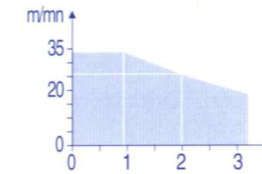
F	D	GB	E	I	P
Chariot distributeur et courbes de charges	Verfahrbare Laufkatze	Traversing trolley	Carro distribuidor	Carrellino distributore	Carro distribuidor
Reactions en service	Verfahrbare Laufkatze und Lastkurven	Traversing trolley and load diagrams	Carro distribuidor y curvas de cargas	Carrellino distributore e curve di carico	Carro distribuidor e curva de cargas
Reactions hors service	Reaktionskräfte in Betrieb	Reactions in service	Reacciones en servicio	Reazioni in servizio	Reações em serviço
A vide sans lest (ni train de transport) avec flèche et hauteur maximum.	Reaktionskräfte außer Betrieb	Reactions out of service	Reacciones fuera de servicio	Reazioni fuori servizio	Reações fora de serviço
	Ohne Last, Ballast (und Transportachse), mit Maximalausleger und Maximalhöhe.	Without load, ballast (or transport axes), with maximum jib and maximum height.	Sin carga, sin lastre, (ni tren de transporte), flecha y altura máxima.	A vuoto, senza zavorra (ne assali di trasporto) con braccio massimo e altezza massima.	Sem carga, sem lastro, (nem trem de transporte) - sem lastro com lança e altura máximas.

Mécanismes
Antriebe
Mechanisms
Mecanismos
Meccanismi
Mecanismos

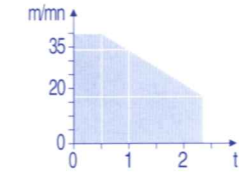
LXQ 1

												ch - PS hp	kW		
	15 LVF 10 Optima	m/min	3,6	18	37	49	66						15	11	
		kg	1600	1600	1600	1100	500								
		m/min	3,6	18	37	54	66	1,8	9	19	27	33			
	3 DVF5	kg	1600	1600	1600	1000	500	3200	3200	3200	2000	1000	3	2,2	
		m/min	19 - 41												
	10 LVF 12 Optima	m/min	2	10	17	34	40						10	7,5	
		kg	2400	2400	2400	1000	500								
		m/min	15 - 38 (0 → 1000 kg) 15 - 30 (1000 → 2400 kg)												
	2 DVF5	kg	15 - 38 (0 → 1000 kg) 15 - 30 (1000 → 2400 kg)											2	1,5
		m/min													
	RVF2-30	tr/min U/min rpm	0 → 0,8											2	1,5
		IEC 38	kVA												
400 V (+6% -10%) 50 Hz			15 LVF 10 : 20 kVA 10 LVF 12 : 14 kVA					2000/14							

15 LVF 10 Optima

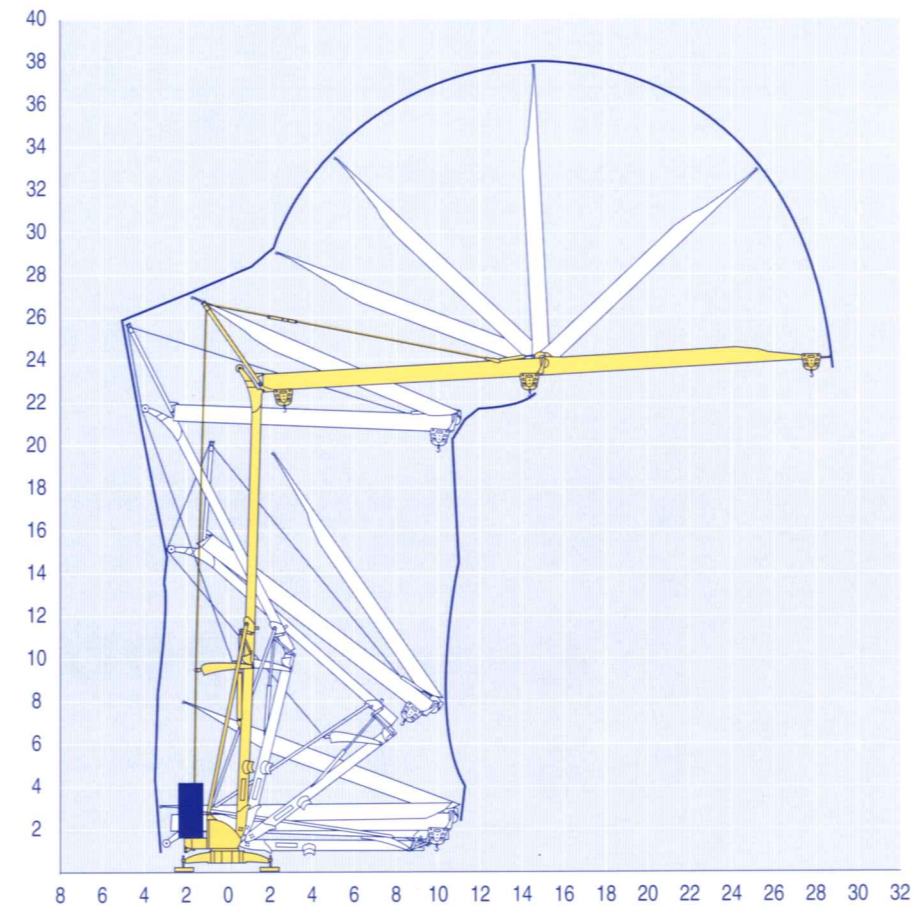


10 LVF 12 Optima



Montage
Montage
Erection
Montaje
Montaggio
Montagem

LXQ 1



Igo 28 A



F	D	GB	E	I	P
Distribution	Katzfahren	Trolleying	Distribución	Distribuzione	Distribuição
Orientation	Schwenken	Slewing	Orientación	Rotazione	Rotação
Conforme aux directives CEE sur le niveau acoustique	Gemäss EWG-Richtlinien für den Schall-Leistungspegel	In compliance with the EEC Instructions on noise level	Conforme con las directivas CEE sobre el nivel acustico	Conforme alle direttive CEE sul livello acustico	Conforme as directivas CEE sobre o nível acústico