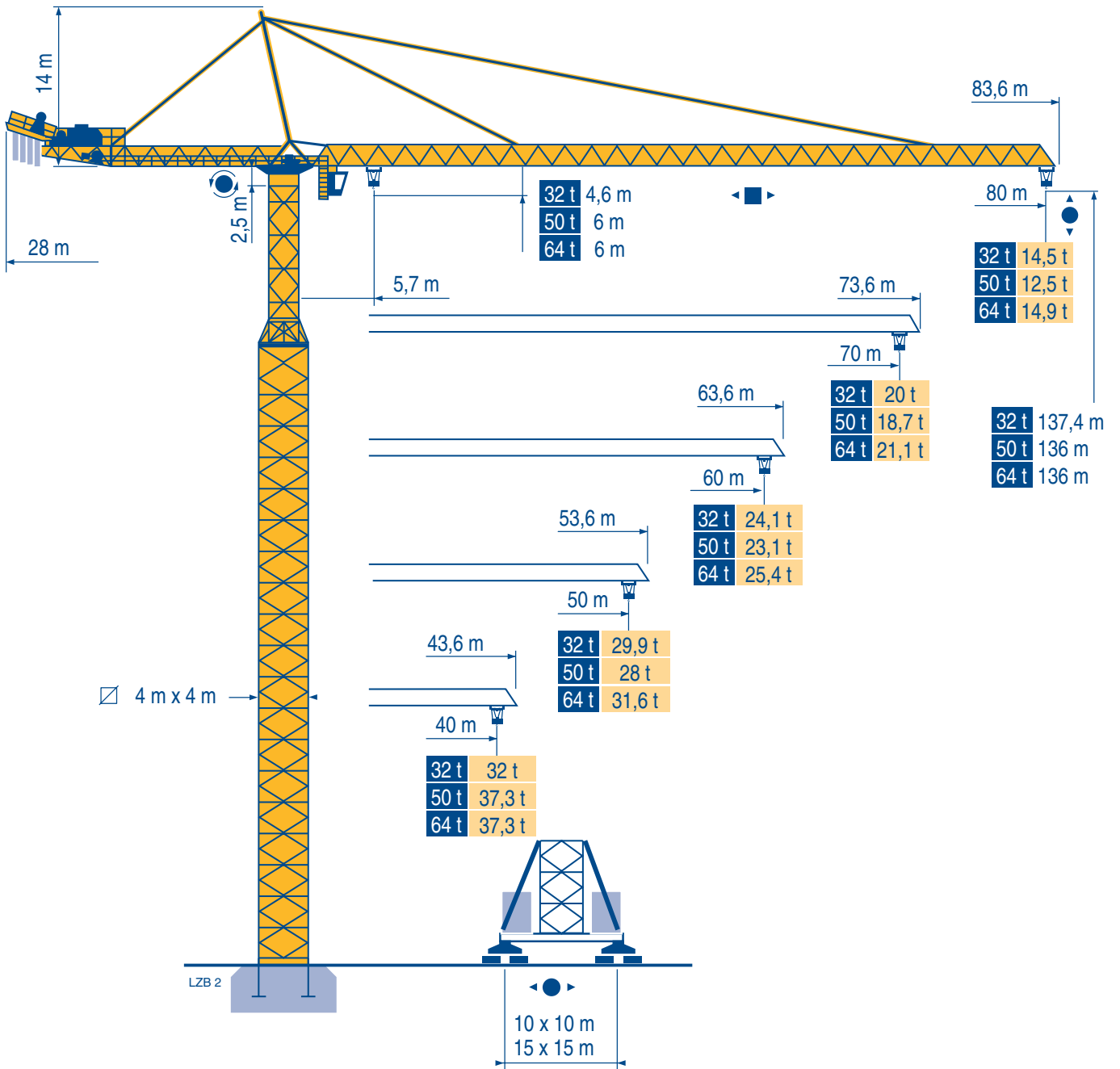


MD 1400



Mat / Réactions 4 m x 4 m

Maste /
Eckdrücke

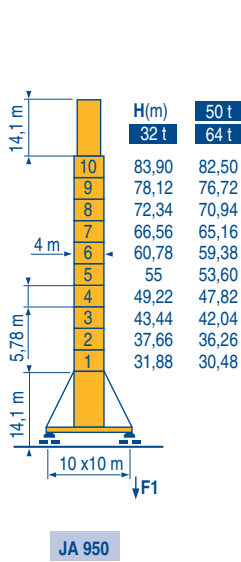
Masts /
Reactions

Mástil /
Reacciones

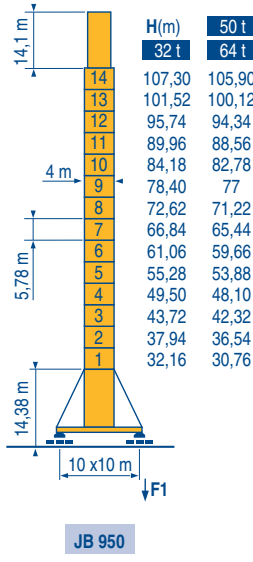
Torre / Reazioni

Tramo /
Reações

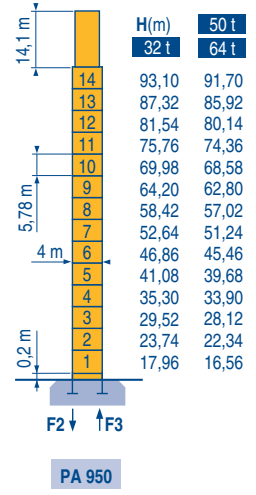
L2B 2



F1	32 t	• 242 t	■ 210 t
	50 t	• 246 t	■ 210 t
	64 t	• 250 t	■ 210 t

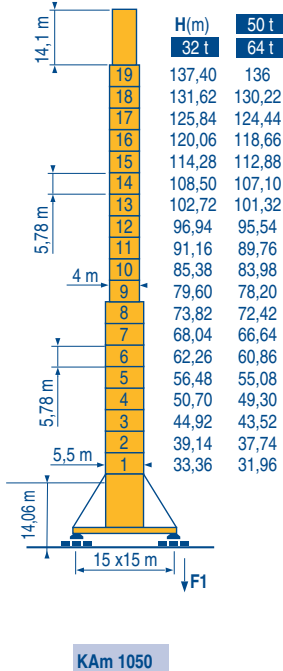


F1	32 t	• 288 t	■ 278 t
	50 t	• 292 t	■ 278 t
	64 t	• 296 t	■ 278 t

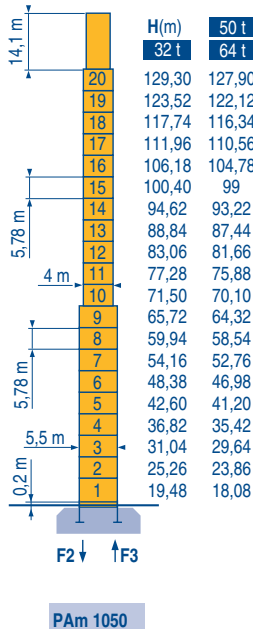


F2	32 t	• 380 t	■ 287 t
	50 t	• 384 t	■ 287 t
	64 t	• 388 t	■ 287 t
F3	32 t	• 206 t	■ 129 t
	50 t	• 201 t	■ 129 t
	64 t	• 198 t	■ 129 t

4 m x 4 m
5,5 m x 5,5 m



F1	32 t	• 292 t	■ 395 t
	50 t	• 296 t	■ 395 t
	64 t	• 300 t	■ 395 t



MD 1400

POTAIN

F

Réactions en service
Réactions hors service



A vide sans lest (ni train de transport) avec flèche et hauteur maximum.

D

Reaktionskräfte in Betrieb
Reaktionskräfte außer Betrieb

Ohne Last, Ballast (und Transportachse), mit Maximalausleger und Maximalhöhe.

GB

Reactions in service
Reactions out of service

Without load, ballast (or transport axles), with maximum jib and maximum height.

E

Reacciones en servicio
Reacciones fuera de servicio

Sin carga, sin lastre, (ni tren de transporte), flecha y altura máxima.

I

Reazioni in servizio
Reazioni fuori servizio

A vuoto, senza zavorra (ne assali di trasporto) con braccio massimo e altezza massima.

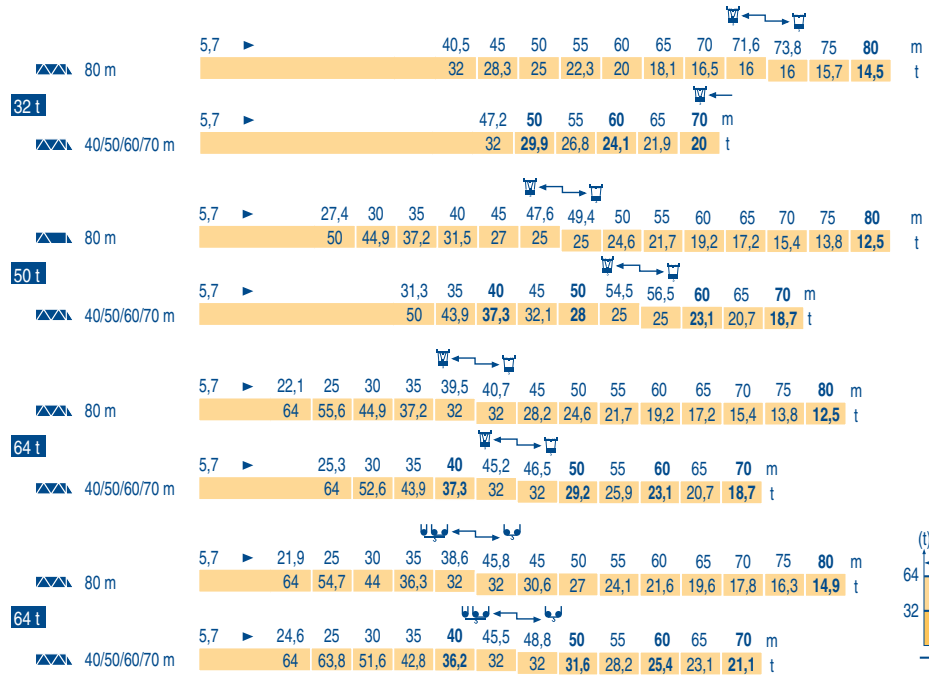
P

Reações em serviço
Reações fora de serviço

Sem carga (nem trem de transporte)- sem lastro com lança e altura máximas.

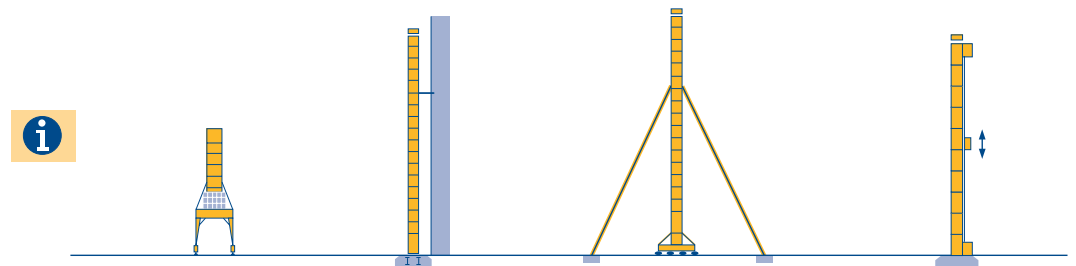
Courbes de charges
 Lastkurven
 Load diagrams
 Curvas de cargas
 Curve di carico
 Curva de cargas

LZB 2



Autres implantations
 Aufstellmöglichkeiten
 Mounting possibilities
 Outras implantaciones
 Altre postazioni
 Outras implantações

LZB 1



MD 1400



i	F	D	GB	E	I	P
	Nous consulter	Auf Anfrage	Consult us	Consultarnos	Consultateci	Consultar-nos

Mécanismes
Antriebe
Mechanisms
Mecanismos
Meccanismi
Mecanismos

LZB 2

i			U					U					ch - PS hp	kW	
▲ ▼	32 t	250 LCC 80	m/min	46 → 68 → 86 → 108 → 122	23 → 34 → 43 → 54 → 61					250	180	620 m			
			t	16 12 8 4 2	32 24 16 6 4										
	50 t	250 LCC 125	m/min	30 → 44 → 56 → 72 → 80	15 → 22 → 28 → 36 → 40					250	180	690 m			
			t	25 18,8 12,5 6,2 3,1	50 37,5 25 12,5 6,25										
64 t	250 LCC 160	m/min	24 → 34 → 44 → 56 → 62	12 → 17 → 22 → 28 → 31					250	180	440 m				
		t	32 24 16 8 4	64 48 32 16 8											
◀ ▶	32 t	15 DVF 16	m/min 0 → 33 (32 t) - 0 → 50 (16 t) - 0 → 67 (8 t) - 0 → 100 (2 t)									15	11		
	50 t	25 DVF 25	m/min 0 → 33 (50 t) - 0 → 66 (25 t) - 0 → 80 (12,5 t)									25	18		
	64 t	25 DVF 33	m/min 0 → 25 (64 t) - 0 → 50 (32 t)									25	18		
	RVF		tr/min U/min rpm	0 → 0,6					3 x 25	3 x 18,4					
			m/min	0 → 16					16 x 4	16 x 3					
				8,5 - 17					12x 5	12 x 3,7					
CEI 38			IEC 38			kVA									
400 V (+6% -10%) 50 Hz			250 LCC : 340 kVA			2000 / 14									

F	D	GB	E	I	P
Levage	Heben	Hoisting	Elevación	Sollevamento	Elevação
Distribution	Katzfahren	Trolleying	Distribución	Distribuzione	Distribuição
Orientation	Schwenken	Stewing	Orientación	Rotazione	Rotação
Translation	Kranfahren	Travelling	Traslación	Traslazione	Translação
Conforme aux directives CEE sur le niveau acoustique	Gemäss EWG-Richtlinien für den Schall-Leistungspegel	In compliance with the EEC Instructions on noise level	Conforme con las directivas CEE sobre el nivel acústico	Conforme alle direttive CEE sul livello acustico	Conforme as directivas CEE sobre o nível acústico

Document commercial non contractuel. Pour toute information technique se référer à la notice correspondante

Unverbindliches Vertriebsdokument. Für technische Informationen, siehe die entsprechenden Anweisungen.

This commercial document is not legally binding. For any technical information, please refer to the corresponding instructions.

Documento commercial no contractual. Para cualquier información técnica, ver la noticia correspondiente.

Documento commerciale non vincolante, per tutte le informazioni tecniche fare riferimento al catalogo istruzioni

Documento comercial não contractual. Para qualquer informação técnica complementar consultar as respectivas instruções



18, rue de Charbonnières - B.P.173
69132 ECULLY Cedex - France
Tél. : (33) 4 72 18 20 20
Fax. : (33) 4 72 18 20 00
www.manitowoccrane.com www.potain.com

Americas
Tel: +1 920 683 6322
Tel: +1 717 597 8121

Europe - Middle East - Africa
Tel : +(33) 4 72 81 50 00
Tel : +(44) 191 565 6281

Asia - Pacific
Tel: +(65) 6861 7133
Fax: +(65) 6862 4142
www.manitowoccrane.com

MD 1400
Réf. 2003 48 LZB 2
Copyright.Reproduction interdite © POTAIN 2003

Réalisation Sedoc