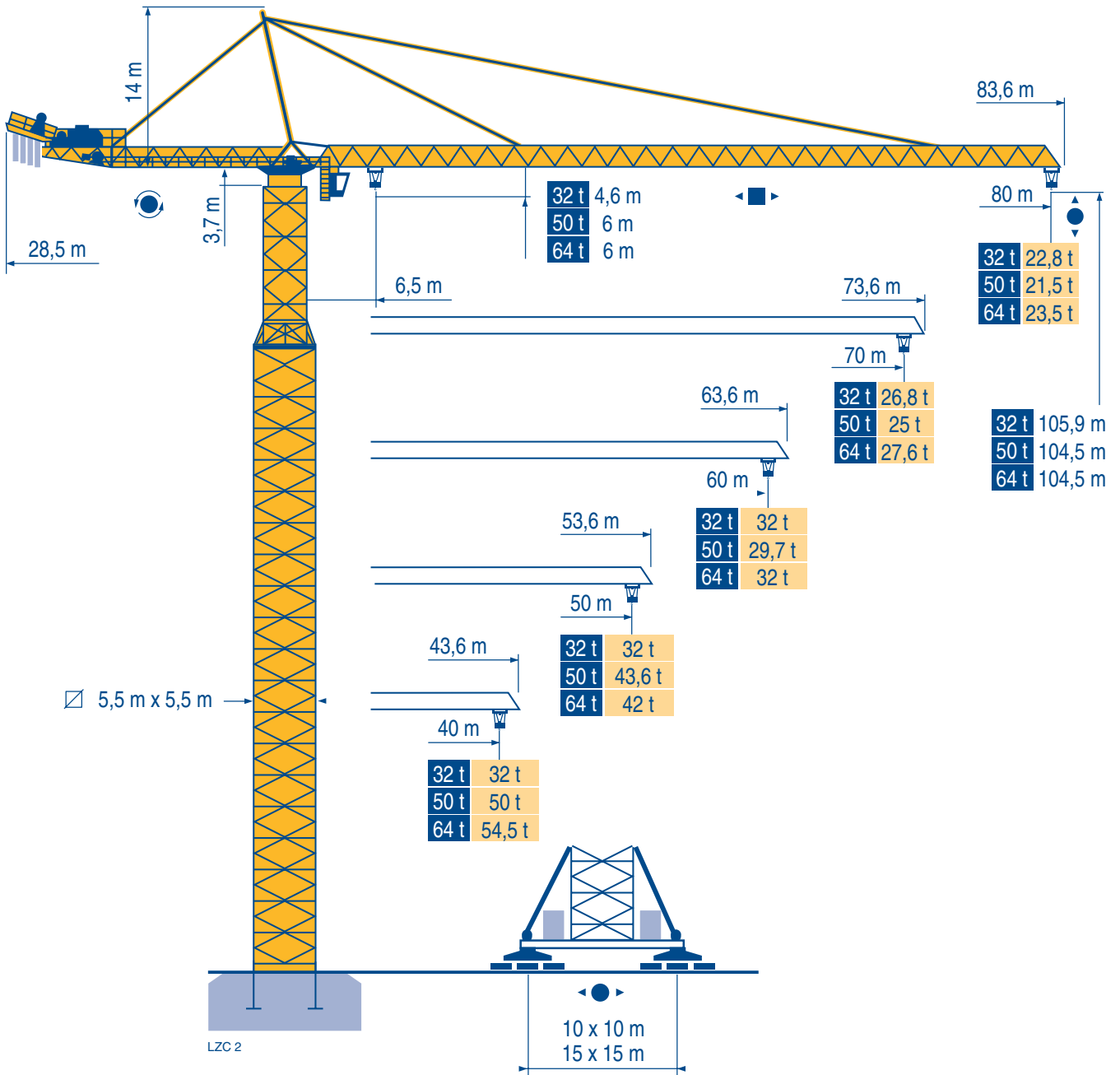


MD 2200



Mat / Réactions \square 5,5 m x 5,5 m

Maste /
Eckdrücke

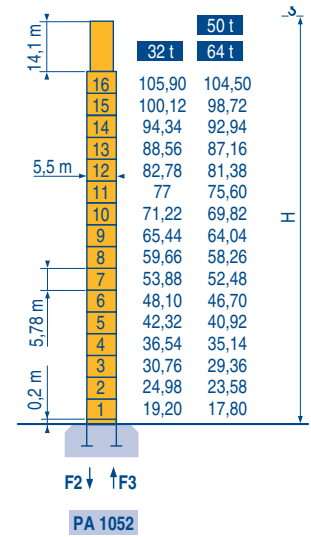
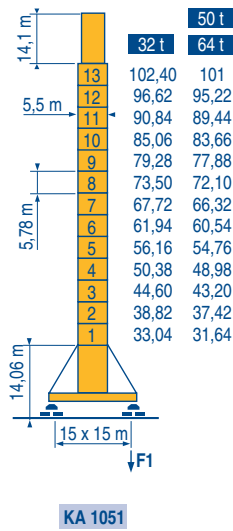
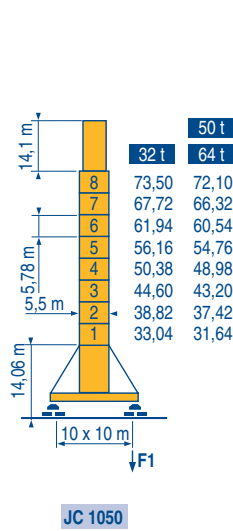
Masts /
Reactions

Mástil /
Reacciones

Torre / Reazioni

Tramo /
Reações

LZC 2



F1	32 t	320 t	250 t
	50 t	320 t	250 t
	64 t	320 t	250 t

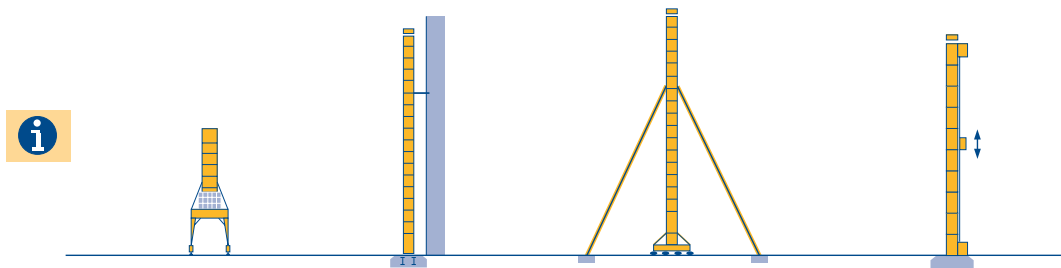
F1	32 t	268 t	235 t
	50 t	268 t	235 t
	64 t	268 t	235 t

F2	32 t	445 t	371 t
	50 t	445 t	371 t
	64 t	445 t	371 t

F3	32 t	173 t	125 t
	50 t	173 t	125 t
	64 t	173 t	125 t

Autres implantations
Aufstellmöglichkeiten
Mounting possibilities
Otras implantaciones
Altre postazioni
Outras implantações

LZC 1



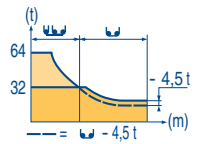
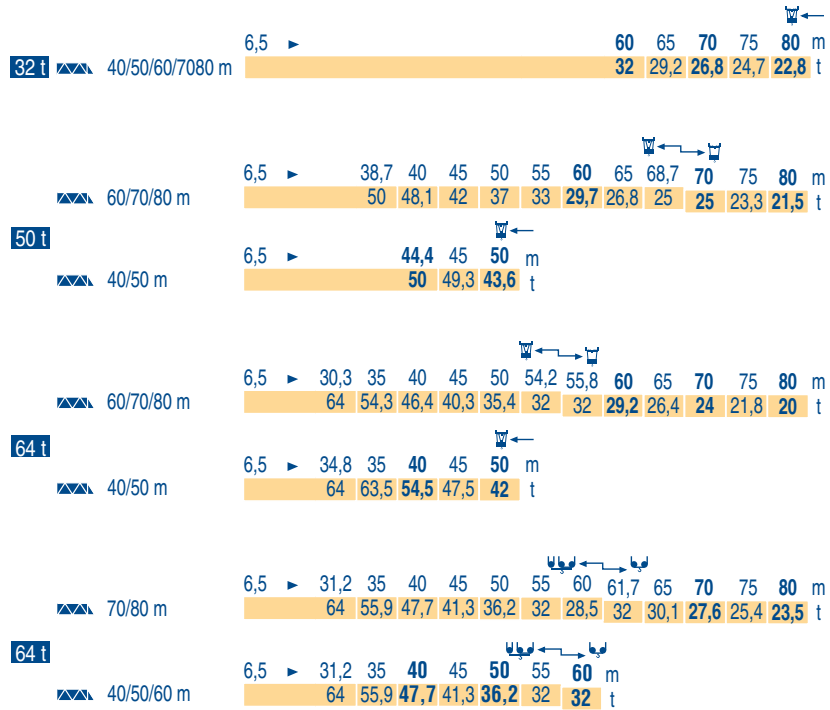
MD 2200

POTAIN

	F	D	GB	E	I	P
	Réactions en service	Reaktionskräfte in Betrieb	Reactions in service	Reacciones en servicio	Reazioni in servizio	Reações em serviço
	Réactions hors service	Reaktionskräfte außer Betrieb	Reactions out of service	Reacciones fuera de servicio	Reazioni fuori servizio	Reações fora de serviço
	A vide sans lest (ni train de transport) avec flèche et hauteur maximum.	Ohne Last, Ballast (und Transportachse), mit Maximalausleger und Maximalhöhe.	Without load, ballast (or transport axes), with maximum jib and maximum height.	Sin carga, sin lastre, (ni tren de transporte), flecha y altura máxima.	A vuoto, senza zavorra (ne assali di trasporto) con braccio massimo e altezza massima.	Sem carga (nem trem de transporte)- sem lastro com lança e altura máximas.
	Nous consulter	Auf Anfrage	Consult us	Consultarnos	Consultateci	Consultar-nos

Courbes de charges
Lastkurven
Load diagrams
Curvas de cargas
Curve di carico
Curva de cargas

LZC 2



Mécanismes
Antriebe
Mechanisms
Mecanismos
Meccanismi
Mecanismos

LZC 3

i			U					UU				ch - PS hp	kW	
▲ ▼	32 t	250 LCC 80	m/min	46 → 68 → 86 → 108 → 122	23 → 34 → 43 → 54 → 61				250	180	620 m			
		t	16 12 8 4 2	32 24 16 6 4										
	50 t	250 LCC 125	m/min	30 → 44 → 56 → 72 → 80	15 → 22 → 28 → 36 → 40				250	180	690 m			
		t	25 18,8 12,5 6,2 3,1	50 37,5 25 12,5 6,25										
64 t	250 LCC 160	m/min	24 → 34 → 44 → 56 → 62	12 → 17 → 22 → 28 → 31				250	180	440 m				
	t	32 24 16 8 4	64 48 32 16 8											
	500 LCC 160	m/min	60 → 82 → 120	30 → 41 → 60				500	370	610 m				
		t	32 21 5,4	64 42 10,8										
◀ ▶	32 t	15 DVF 16	m/min	0 → 33 (32 t) - 0 → 50 (16 t) - 0 → 67 (8 t) - 0 → 100 (2 t)							15	11		
	50 t	25 DVF 25	m/min	0 → 33 (50 t) - 0 → 66 (25 t) - 0 → 80 (12,5 t)							25	18		
	64 t	25 DVF 33	m/min	0 → 25 (64 t) - 0 → 50 (32 t)							25	18		
		RVF	tr/min U/min rpm	0 → 0,6							4 x 25	4 x 18,4		
			m/min	0 → 16							16 x 4	16 x 3		
				8,5 - 17							12x 5	12 x 3,7		
CEI 38			IEC 38			kVA								
400 V (+6% -10%) 50 Hz						250 LCC : 360 kVA 500 LCC : 560 kVA				2000 / 14				

MD 2200



F	D	GB	E	I	P
Levage	Heben	Hoisting	Elevación	Sollevamento	Elevação
Distribution	Katzfahring	Trolleying	Distribución	Distribuzione	Distribuição
Orientation	Schwenken	Slewing	Orientación	Rotazione	Rotação
Translation	Kranfahring	Travelling	Traslación	Traslazione	Translação
Conforme aux directives CEE sur le niveau acoustique	Gemäss EWG-Richtlinien für den Schall-Leistungspegel	In compliance with the EEC Instructions on noise level	Conforme con las directivas CEE sobre el nivel acústico	Conforme alle direttive CEE sul livello acustico	Conforme as directivas CEE sobre o nível acústico



Document commercial non contractuel. Pour toute information technique se référer à la notice correspondante

Unverbindliches Vertriebsdokument. Für technische Informationen, siehe die entsprechenden Anweisungen.

This commercial document is not legally binding. For any technical information, please refer to the corresponding instructions.

Documento commercial no contractuel. Para cualquier información técnica, ver la noticia correspondiente.

Documento commerciale non vincolante, per tutte le informazioni tecniche fare riferimento al catalogo istruzioni

Documento comercial não contratual. Para qualquer informação técnica complementar consultar as respectivas instruções



18, rue de Charbonnières - B.P.173
69132 ECULLY Cedex - France

Tél. : (33) 4 72 18 20 20
Fax. : (33) 4 72 18 20 00
www.manitowoccrane.com www.potain.com

Americas

Tel: +1 920 683 6322
Tel: +1 717 597 8121

Europe - Middle East - Africa

Tel : +(33) 4 72 81 50 00
Tel : +(44) 191 565 6281

Asia - Pacific

Tel: +(65) 6861 7133
Fax: +(65) 6862 4142

www.manitowoccrane.com

MD 2200

Réf. 2003 48 LZC 3

Copyright.Reproduction interdite © POTAIN 2003