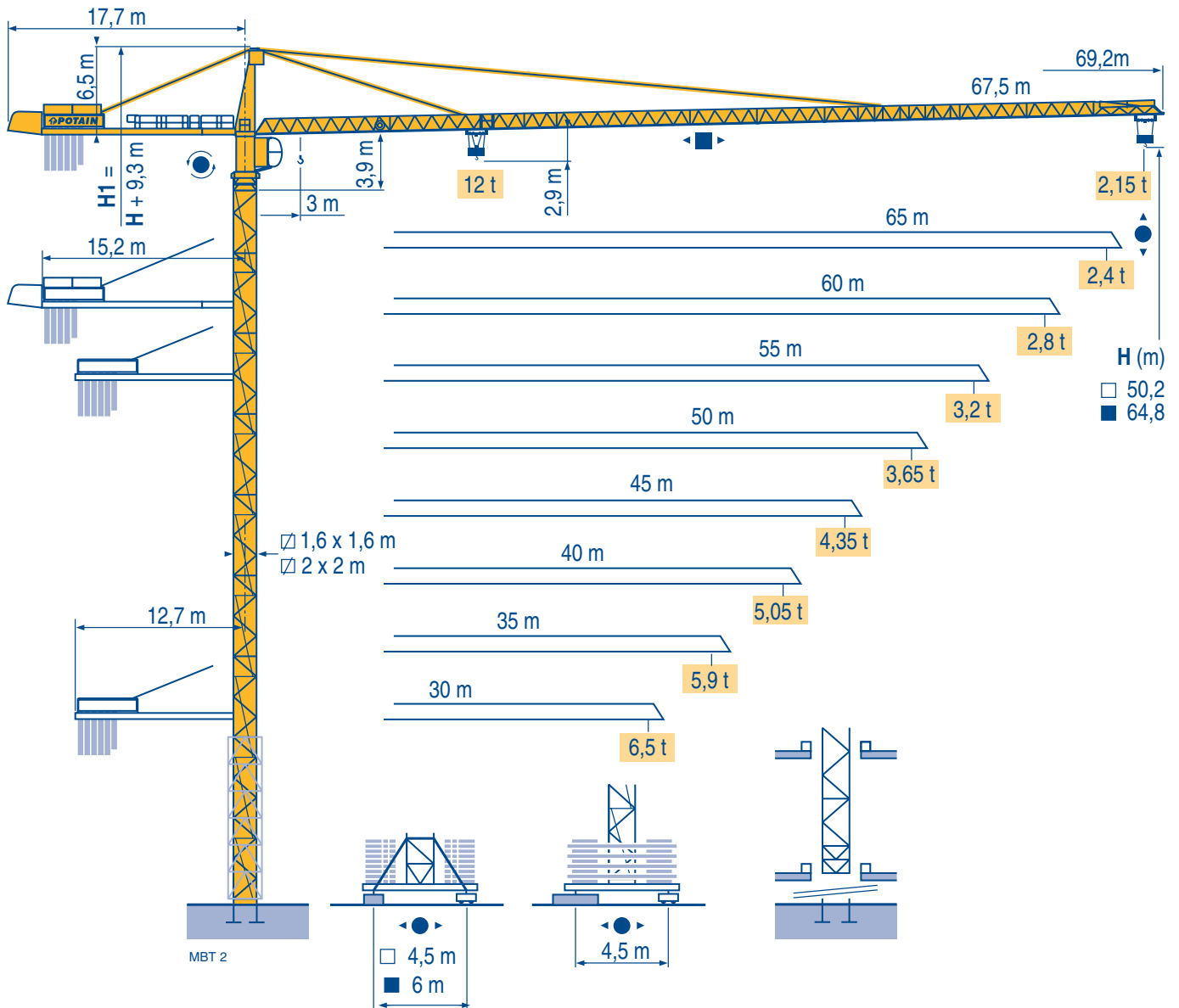


MD 238 A J12



TOPKIT

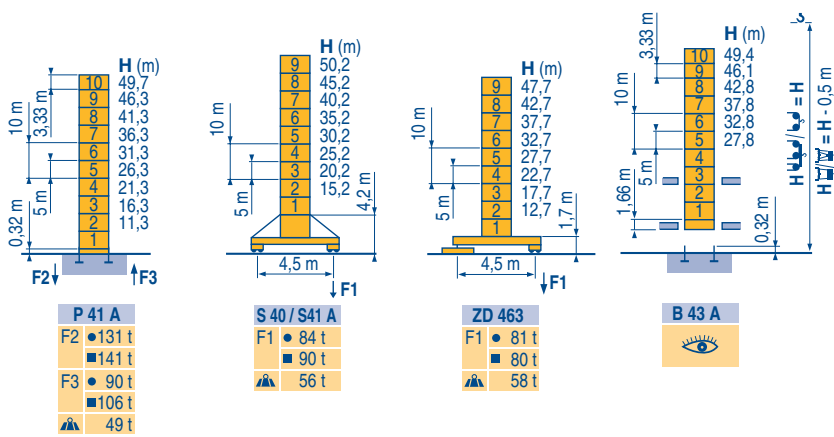
CE FEM 1.001-A3

Mat / Réactions \square 1,6 m

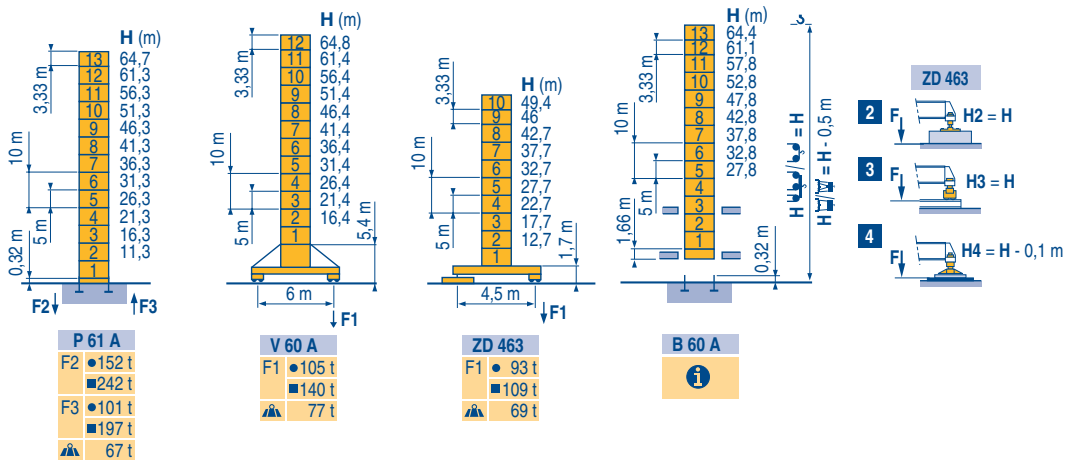
Maste /
Eckdrücke \triangle 30 m \Rightarrow 60 m

Masts /
Reactions
Mástil /
Reacciones
Torre / Reazioni
Tramo /
Reações

MBT 1

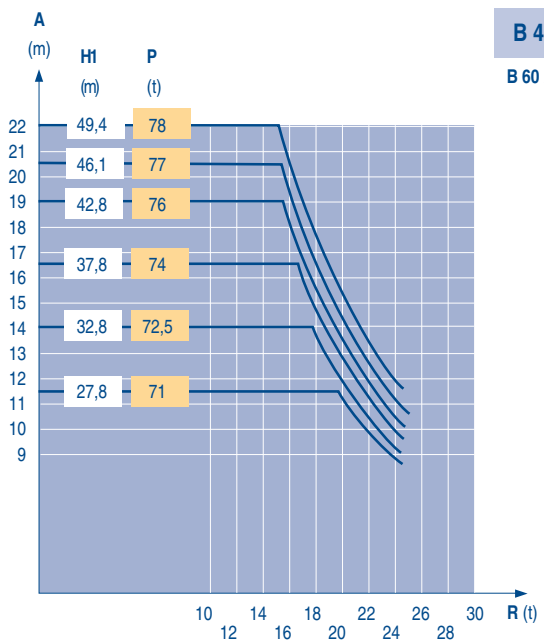
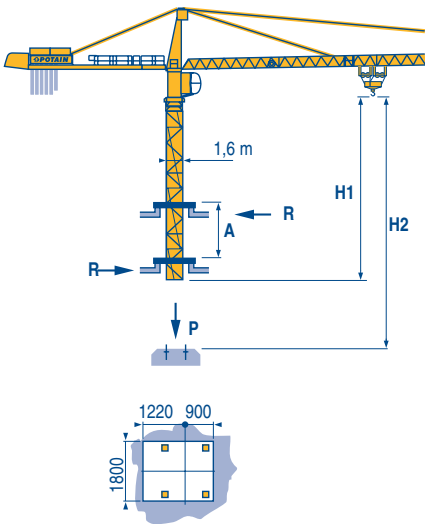


\square 2 m
30 m \Rightarrow 67,5 m



Télescopage sur dalles
Kletterkrane im Gebäude
Climbing crane
Telescopage guas trepadoras
Gru in cavedio
Telescopagem sobre lajes

MBT 1



TOPKIT
MD 238 A J12

POTAIN

F	D	GB	E	I	P
●	●	●	●	●	●
■	■	■	■	■	■
Réactions en service Réactions hors service A vide sans lest (ni train de transport) avec flèche et hauteur maximum.	Reaktionskräfte in Betrieb Reaktionskräfte außer Betrieb Ohne Last, Ballast (und Transportachse), mit Maximalausleger und Maximalhöhe.	Reactions in service Reactions out of service Without load, ballast (or transport axes), with maximum jib and maximum height.	Reacciones en servicio Reacciones fuera de servicio Sin carga, sin lastre, (ni tren de transporte), flecha y altura máxima.	Reazioni in servizio Reazioni fuori servizio A vuoto, senza zavorra (ne assali di trasporto) con braccio massimo e altezza massima.	Reações em serviço Reações fora de serviço Sem carga (nem trem de transporte)- sem lastro com lança e altura máximas.
Nous consulter	Auf Anfrage	Consult us	Consultarnos	Consultateci	Consultar-nos

Courbes de charges

Lastkurven

Load diagrams

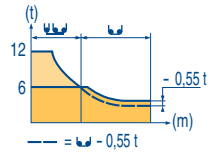
Curvas de cargas

Curve di carico

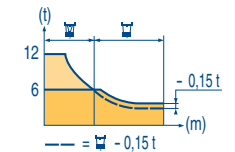
Curva de cargas

MBT 1

Span (m)	15	17	20	22	25	26,7	28,9	30	32	35	37	40	42	45	47	50	52	55	57	60	62	65	67,5	Unit
67,5 m 3	12	10,3	8,5	7,6	6,5	6	5,7	5,3	4,8	4,5	4,1	3,9	3,6	3,4	3,1	3	2,8	2,65	2,5	2,4	2,25	2,15	t	
65 m 3	15,6	17	20	22	25	27	28	30,2	32	35	37	40	42	45	47	50	52	55	57	60	62	65	m	
60 m 3	16,3	17	20	22	25	27	29,2	31,5	32	35	37	40	42	45	47	50	52	55	57	60	62	65	m	
55 m 3	16,6	17	20	22	25	27	29,8	32,2	35	37	40	42	45	47	50	52	55	m						
50 m 3	16,8	17	20	22	25	27	30,2	32,6	35	37	40	42	45	47	50	m								
45 m 3	17,5	20	22	25	27	30	31,5	34	35	37	40	42	45	m										
40 m 3	17,7	20	22	25	27	30	31,8	34,4	35	37	40	m												
35 m 3	17,8	20	22	25	27	30	31,9	34,5	35	m														
30 m 3	17,8	20	22	25	27	30	m																	



Span (m)	14,9	17	20	22	25	26,8	27,3	30	32	35	37	40	42	45	47	50	52	55	57	60	62	65	67,5	Unit
67,5 m 2,5	12	10,3	8,5	7,6	6,5	6	5,4	5	4,4	4,1	3,7	3,5	3,2	3	2,8	2,65	2,45	2,3	2,15	2,05	1,9	1,8	t	
65 m 2,5	15,6	17	20	22	25	27	28,1	28,6	32	35	37	40	42	45	47	50	52	55	57	60	62	65	m	
60 m 2,5	16,2	17	20	22	25	27	29,3	29,8	32	35	37	40	42	45	47	50	52	55	57	60	62	65	m	
55 m 2,5	16,6	17	20	22	25	27	29,9	30,5	32	35	37	40	42	45	47	50	52	55	m					
50 m 2,5	16,8	17	20	22	25	27	30,3	30,9	32	35	37	40	42	45	47	50	m							
45 m 2,5	17,5	20	22	25	27	30	31,7	32,3	35	37	40	42	45	m										
40 m 2,5	17,7	20	22	25	27	30	32	32,7	35	37	40	m												
35 m 2,5	17,8	20	22	25	27	30	32,1	32,8	35	m														
30 m 2,5	17,9	20	22	25	27	30	m																	



Lest de contre-flèche

Gegenauslegerballast

Counter-jib ballast

Lastre de contra flecha

Contrapeso

Lastros da contra lança

MBT 2

Span (m)	Jib length (m)	50 LVF 30 - 75 LVF 30		100 LVF 30	
		4 200 - 3 400 - 2 300 kg	4 200 - 700 kg	4 200 - 3 400 - 2 300 kg	4 200 - 700 kg
67,5 m	14,5 m	23 300	23 100	22 500	22 400
65 m	14,5 m	21 400	21 700	21 000	21 000
60 m	14,5 m	20 200	20 300	20 200	19 600
55 m	12 m	25 200	24 500	24 400	23 800
50 m	12 m	23 300	23 100	22 500	22 400
45 m	12 m	20 200	19 600	19 100	18 900
40 m	12 m	17 200	17 500	16 800	16 800
35 m	12 m	14 900	15 400	14 900	14 700
30 m	12 m	13 000	13 300	12 600	12 600

Lest de base

Grundballast

Base ballast

Lastre de base

Zavorra di base

Lastros da base

MBT 1

1,6 m	S 40 A	H (m)	50,2	45,2	40,2	35,2	30,2	25,2	20,2	15,2			
			(t)	84	72	60	60	60	60	60	60		
1,6 m	ZD 463	H (m)	47,7	42,7	37,7	32,7	27,7	22,7	17,7	12,7			
			(t)	75	70	65	60	60	60	60	60		
2 m	V 60 A	H (m)	64,8	61,4	56,4	51,4	46,4	41,4	36,4	31,4	26,4	21,4	16,4
			(t)	132	120	96	72	48	48	48	36	36	36
2 m	ZD 463	H (m)	49,4	46	42,7	37,7	32,7	27,7	22,7	17,7	12,7		
			(t)	95	75	70	65	65	60	60	60	60	

Ancrages

Verankerungen

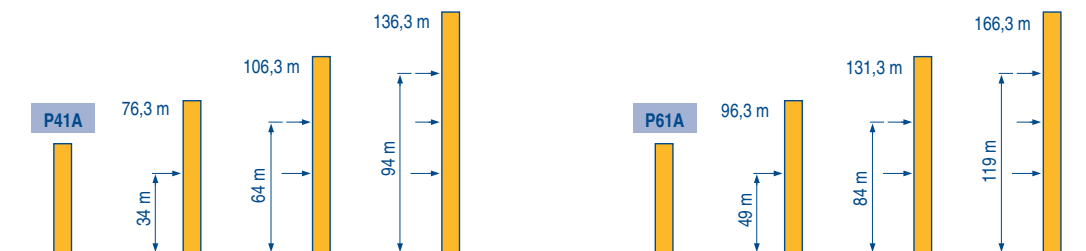
Anchorage

Anclaje

Ancoraggio

Ancoragem

MBT 1



TOPKIT









MD 238 A J12

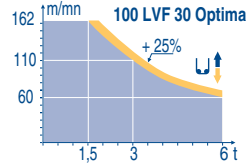
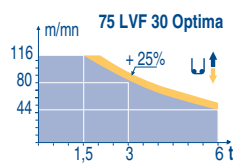
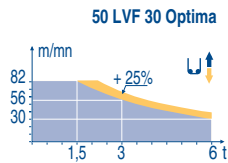

















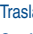

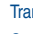

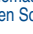
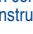




	F	D	GB	E	I	P
A	Distance entre cadres	Abstand zwischen den Rahmen	Distance between collars	Distancia entra marcos	Distanza fra i telai	Distância entre quadros
H1	Hauteur grue	Kranhöhe	Crane height	Altura grúa	Altezza gru	Altura da grua
P	Poids de la grue(en service)	Krangewicht (in Betrieb)	Crane weight (in service)	Peso de la grúa (en servicio)	Peso della gru (in servizio)	Peso da grua (em serviço)
R	Réaction horizontale	Horizontalkräfte	Horizontal reaction	Reaccion horizontal	Reazione orizzontale	Reacção horizontal
	Voir télescopage sur dalles	Siehe Kletterkrane im Gebäude	See climbing crane	Veja grua trepadora	Consultare gru in cavedio	Ver telescopagem sobre lages


Mécanismes
Antriebe
Mechanisms
Mecanismos
Meccanismi
Mecanismos

MBT 3

		U ↑						UU ↑						ch - PS hp	kW												
▲ ▼	50 LVF 30 Optima	m/min	2,6	→	10	→	30	→	40	→	56	→	82	1,3	→	5	→	15	→	20	→	28	→	41	50	37	337 m
	t	6	6	6	4,5	3	1,5	12	12	12	9	6	3														
▲ ▼	75 LVF 30 Optima	m/min	3,6	→	44	→	56	→	80	→	116	1,8	→	22	→	28	→	40	→	58	75	55	766 m				
	t	6	6	4,5	3	1,5	6	9	6	3																	
▲ ▼	100 LVF 30 Optima	m/min	0	→	60	→	79	→	110	→	162	0	→	30	→	40	→	55	→	81	100	75	941 m				
	t	6	6	4,5	3	1,5	12	9	6	3																	
◀ ▶	6 DVF 4	m/min	0 → 50 (12 t) 0 → 100 (6 t) 0 → 120 (3 t)									5,5	4														
	RVF 152 Optima +	tr/min U/min rpm	0 → 0,8									2 x 5,5	2 x 4														
	S 40 A RT 324 R ≥ 10 m	m/min	12,5 - 25									2 x 7	2 x 5,2														
	S 41 A RT 443 A1 2V R ≥ 10 m	m/min	15 - 30									4 x 5	4 x 3,7														
	ZD 463 RT 443 A1 2V	m/min	15 - 30									4 x 5	4 x 3,7														
	V 60 A RT 544 A1 2V R ≥ 13 m	m/min	13,5 - 27									4 x 7	4 x 5,2														
CEI 38  IEC 38		kVA																									
400 V (+6% -10%) 50 Hz		50 LVF : 70 kVA 75 LVF : 95 kVA 100 LVF : 120 kVA										2000/14															



F	D	GB	E	I	P	
						
Levage	Heben	Hoisting	Elevación	Sollevamento	Elevação	
						
Distribution	Katzfahren	Trolleying	Distribución	Distribuzione	Distribuição	
						
Orientation	Schwenken	Slewing	Orientación	Rotazione	Rotação	
						
Translation	Kranfahren	Travelling	Traslación	Traslazione	Translação	
	Conforme aux directives CEE sur le niveau acoustique		Conforme con las directivas CEE sobre el nivel acustico		Conforme alle direttive CEE sul livello acustico	
	Gemäss EWG-Richtlinien für den Schall-Leistungspegel		Conforme con las directivas CEE sobre el nivel acustico		Conforme as directivas CEE sobre o nível acústico	
	In compliance with the EEC Instructions on noise level		Conforme con las directivas CEE sobre el nivel acustico		Conforme alle direttive CEE sul livello acustico	

 Document commercial non contractuel. Pour toute information technique se référer à la notice correspondante

Unverbindliches Vertriebsdokument. Für technische Informationen, siehe die entsprechenden Anweisungen.

This commercial document is not legally binding. For any technical information, please refer to the corresponding instructions.

Documento commercial non contractuel. Para cualquier información técnica, ver la noticia correspondiente.

Documento commerciale non vincolante. Per tutte le informazioni tecniche fare riferimento al catalogo istruzioni

Documento comercial não vincolante. Para qualquer informação técnica complementar consultar as respectivas instruções



Manitowoc Crane Group
18, rue de Charbonnières - B.P.173
69132 ECULLY Cedex - France

Tél. : (33) 4 72 18 20 20
Fax. : (33) 4 72 18 20 00
www.manitowoccrane.com www.potain.com



Americas
Tel: +1 920 683 6322
Tel: +1 717 597 8121

Europe - Middle East - Africa
Tel : +(33) 4 72 81 50 00
Tel : +(44) 191 565 6281

Asia - Pacific
Tel: +(65) 6861 7133
Fax: +(65) 6862 4142

www.manitowoccrane.com

TOPKIT MD 238 A J12

Réf. 2004 45 MBT 3

Copyright.Reproduction interdite © POTAIN 2004

Réalisation Sedoc