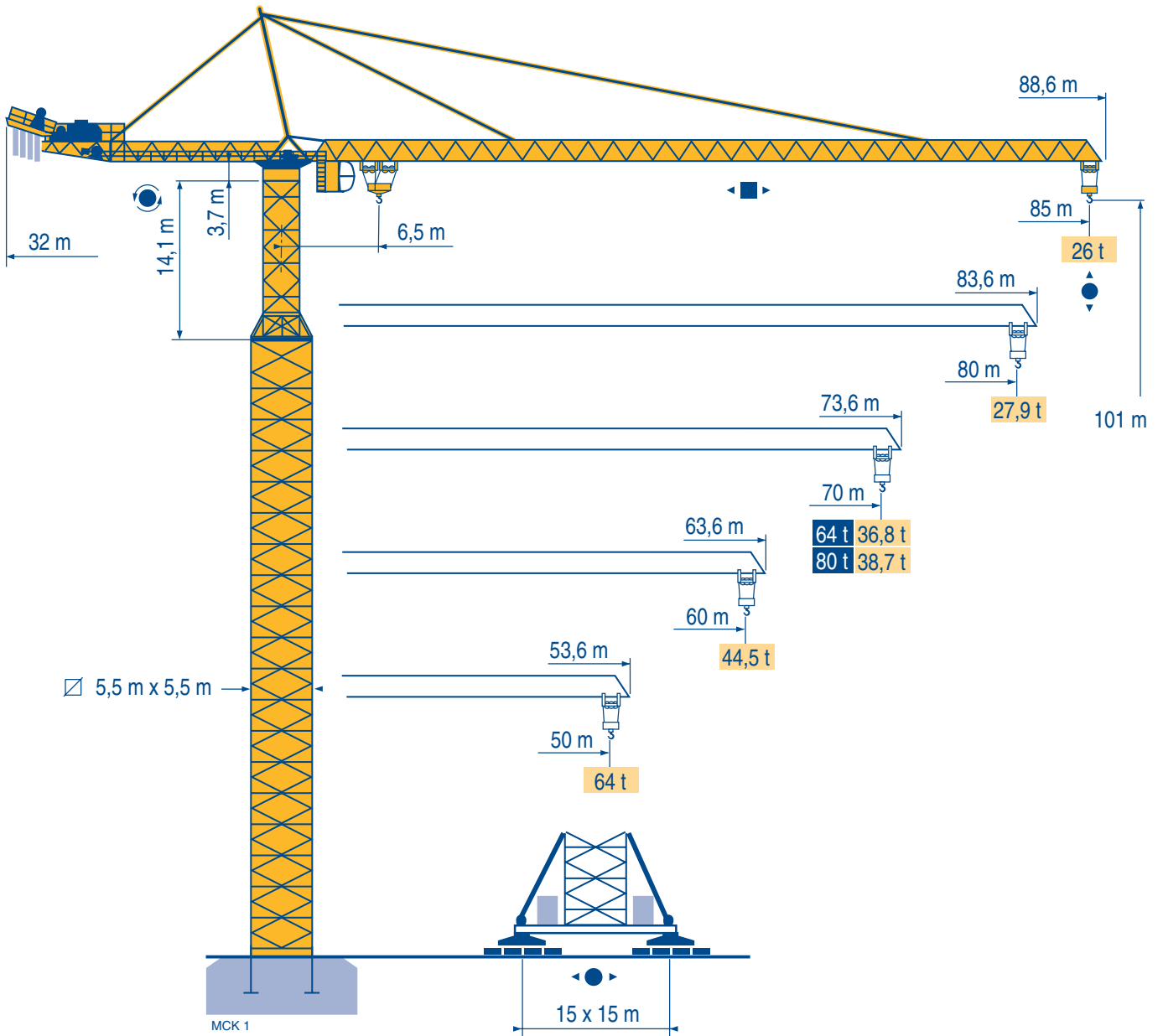


MD 3200



Mat / Réactions \square 5,5 m x 5,5 m

Maste /
Eckdrücke

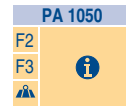
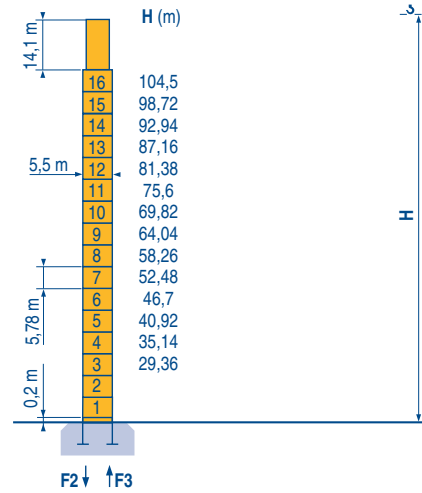
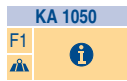
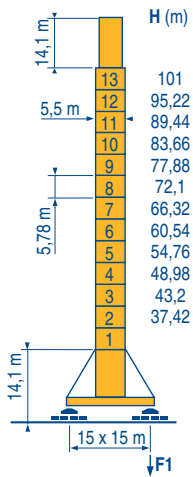
Masts /
Reactions

Mástil /
Reacciones

Torre / Reazioni

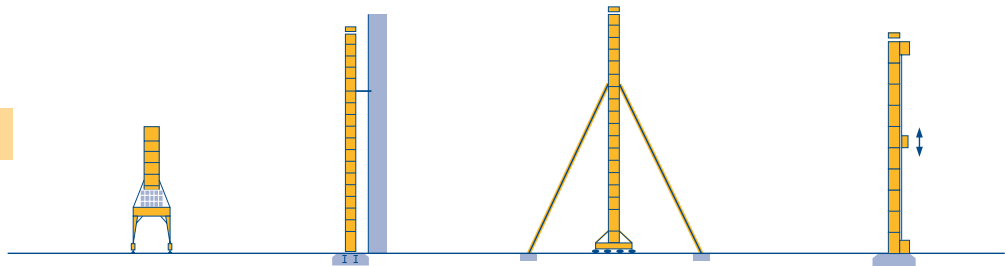
Tramo /
Reações

MCK 1



Autres implantations
Aufstellmöglichkeiten
Mounting possibilities
Otras implantaciones
Altre postazioni
Outras implantações

MCK 1



MD 3200

POTAIN

F

Réactions en service
Réactions hors service



A vide sans lest (ni train de transport) avec flèche et hauteur maximum.



Nous consulter

D

Reaktionskräfte in Betrieb
Reaktionskräfte außer Betrieb

Ohne Last, Ballast (und Transportachse), mit Maximalausleger und Maximalhöhe.

Auf Anfrage

GB

Reactions in service
Reactions out of service

Without load, ballast (or transport axles), with maximum jib and maximum height.

Consult us

E

Reacciones en servicio
Reacciones fuera de servicio

Sin carga, sin lastre, (ni tren de transporte), flecha y altura máxima.

Consultarnos

I

Reazioni in servizio
Reazioni fuori servizio

A vuoto, senza zavorra (ne assali di trasporto) con braccio massimo e altezza massima.

Consultateci

P

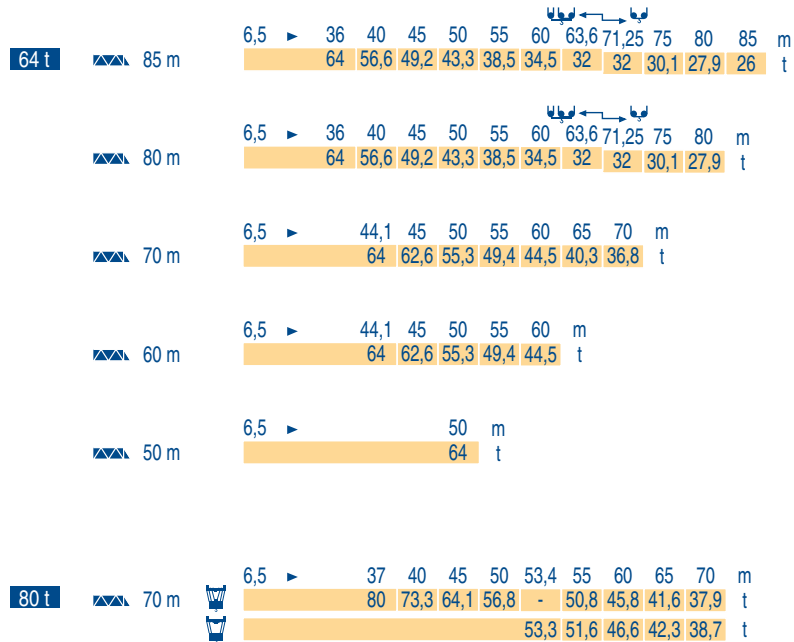
Reações em serviço
Reações fora de serviço

Sem carga (nem trem de transporte)- sem lastro com lança e altura máximas.

Consultar-nos

Courbes de charges
Lastkurven
Load diagrams
Curvas de cargas
Curve di carico
Curva de cargas

MCK1



Mécanismes
Antriebe
Mechanisms
Mecanismos
Meccanismi
Mecanismos

MCK1

| 64 t | | | U U | | | | U U U | | | | ch - PS | kW | | | |
|------|-------------|------------------------|-------------------------------|---|-----|---|-------|----|---|----|---------|-------|--------|-----|-------|
| ▲ | 500 LCC 160 | m/min | 60 | → | 82 | → | 120 | 30 | → | 41 | → | 60 | 500 | 370 | 610 m |
| | | t | 32 | | 21 | | 5,4 | 64 | | 42 | | 10,8 | | | |
| ▼ | 800 LCC 160 | m/min | 92 | → | 126 | → | 160 | 46 | → | 63 | → | 80 | 785 | 560 | 610 m |
| | | t | 32 | | 21 | | 5,4 | 64 | | 42 | | 10,8 | | | |
| ◀ ▶ | 25 DVF 33 | m/min | 0 → 25 (64 t) - 0 → 50 (32 t) | | | | | | | | | 25 | 18,5 | | |
| ⊙ | RVF | tr/min U/min rpm | 0 → 0,6 | | | | | | | | | 6x 25 | 6 x 18 | | |

| 80 t | | | U U | | | | U U U | | | | ch - PS | kW | | | | | | | |
|------|-------------|------------------------|---------|---|------|---|-------|---|------|----|---------|-------|--------|----|---|----|-----|-----|-------|
| ▲ | 250 LCC 133 | m/min | 15 | → | 18 | → | 22,5 | → | 30 | 10 | → | 12 | → | 15 | → | 20 | 250 | 180 | 610 m |
| | | t | 53,3 | | 39,8 | | 26,5 | | 13,3 | 80 | | 60 | | 40 | | 20 | | | |
| ◀ ▶ | 25 DVF 33 | m/min | 0 → 50 | | | | | | | | | 25 | 18,5 | | | | | | |
| ⊙ | RVF | tr/min U/min rpm | 0 → 0,6 | | | | | | | | | 6x 15 | 6 x 11 | | | | | | |

| 100 t - 120 t - 160 t | | | i | | | | | | | | | | |
|-----------------------|------|-------|--------|--|--|--|--|--|--|--|--|--------|----------|
| KA 1050 | RTVF | m/min | 0 → 17 | | | | | | | | | 16 x 7 | 16 x 5,2 |

| CEI 38 | IEC 38 | kVA | |
|------------------------|--------|---|-----------|
| 400 V (+6% -10%) 50 Hz | | 250 LCC : 315 kVA 500 LCC : 515 kVA 800 LCC : 800 kVA | 2000 / 14 |

MD 3200



| F | D | GB | E | I | P |
|--|--|--|---|--|---|
| | | | | | |
| Levage | Heben | Hoisting | Elevación | Sollevamento | Elevação |
| | | | | | |
| Distribution | Katzfahren | Trolleying | Distribución | Distribuzione | Distribuição |
| | | | | | |
| Orientation | Schwenken | Slewing | Orientación | Rotazione | Rotação |
| | | | | | |
| Translation | Kranfahren | Travelling | Traslación | Traslazione | Translação |
| | | | | | |
| Conforme aux directives CEE sur le niveau acoustique | Gemäss EWG-Richtlinien für den Schall-Leistungspegel | In compliance with the EEC Instructions on noise level | Conforme con las directivas CEE sobre el nivel acustico | Conforme alle direttive CEE sul livello acustico | Conforme as directivas CEE sobre o nível acústico |



Document commercial non contractuel. Pour toute information technique se référer à la notice correspondante

Unverbindliches Vertriebsdokument. Für technische Informationen, siehe die entsprechenden Anweisungen.

This commercial document is not legally binding. For any technical information, please refer to the corresponding instructions.

Documento commercial no contractuel. Para cualquier información técnica, ver la noticia correspondiente.

Documento commerciale non vincolante, per tutte le informazioni tecniche fare riferimento al catalogo istruzioni

Documento comercial não contratual. Para qualquer informação técnica complementar consultar as respectivas instruções



Manitowoc Crane Group



18, rue de Charbonnières - B.P.173
69132 ECULLY Cedex - France

Tél. : (33) 4 72 18 20 20
Fax. : (33) 4 72 18 20 00
www.manitowoccrane.com www.potain.com

Americas

Tel: +1 920 683 6322
Tel: +1 717 597 8121

Europe - Middle East - Africa

Tel : +(33) 4 72 81 50 00
Tel : +(44) 191 565 6281

Asia - Pacific

Tel: +(65) 6861 7133
Fax: +(65) 6862 4142

www.manitowoccrane.com

MD 3200

Réf. 2004 52 MCK 1

Copyright.Reproduction interdite © POTAIN 2004