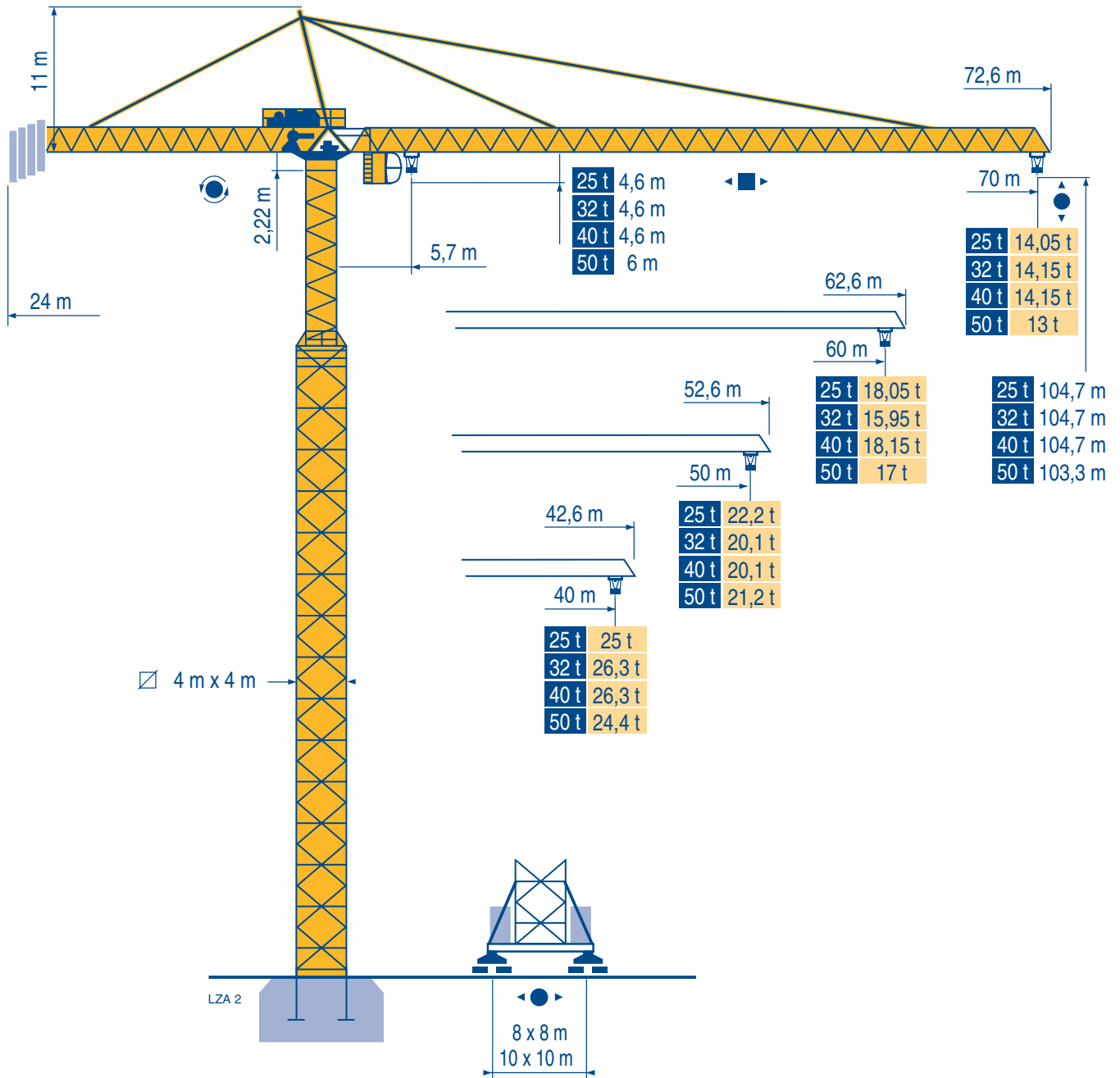


## MD 900 B



Mat / Réactions 4 m x 4 m

Maste /  
Eckdrücke

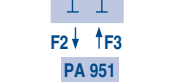
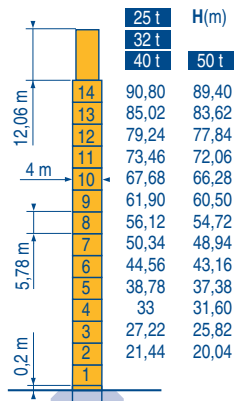
Masts /  
Reactions

Mástil /  
Reacciones

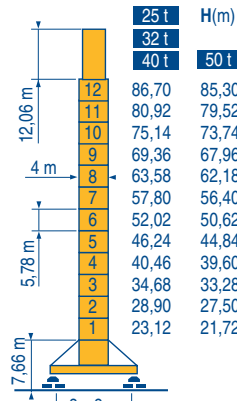
Torre / Reazioni

Tramo /  
Reações

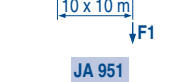
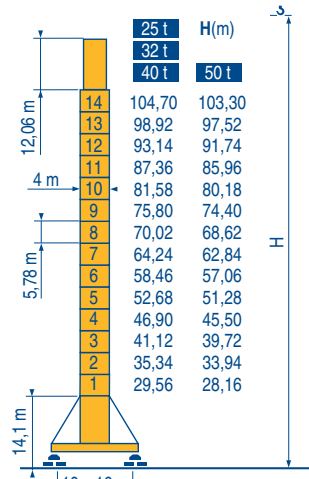
LZA 2



PA 951	
F2	25 t • 247 t ■ 260 t
	32 t • 251 t ■ 261 t
	40 t • 251 t ■ 261 t
	50 t • 287 t ■ 259 t
F3	25 t • 118 t ■ 139 t
	32 t • 130 t ■ 139 t
	40 t • 130 t ■ 139 t
	50 t • 136 t ■ 131 t
	196 t



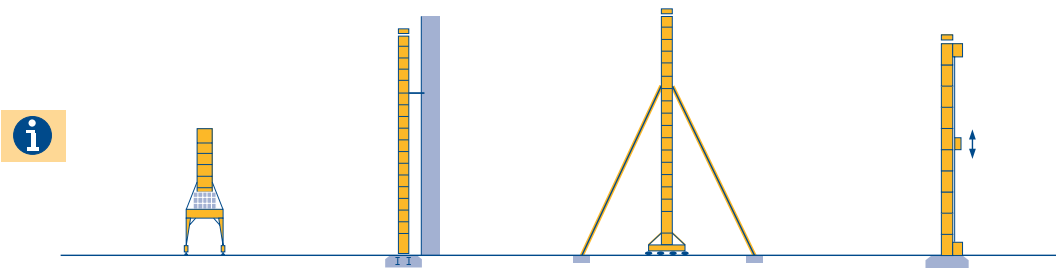
HA 950	
F1	25 t • 195 t ■ 186 t
	32 t • 191 t ■ 187 t
	40 t • 191 t ■ 187 t
	50 t • 221 t ■ 187 t
	218 t



JA 951	
F1	25 t • 197 t ■ 245 t
	32 t • 195 t ■ 245 t
	40 t • 195 t ■ 245 t
	50 t • 218 t ■ 242 t
	258 t

Autres implantations  
Aufstellmöglichkeiten  
Mounting possibilities  
Otras implantaciones  
Altre postazioni  
Outras implantações

LZA 1



MD 900 B

POTAIN

F

Réactions en service  
Réactions hors service

A vide sans lest (ni train de transport) avec flèche et hauteur maximum.

Nous consulter

D

Reaktionskräfte in Betrieb  
Reaktionskräfte außer Betrieb

Ohne Last, Ballast (und Transportachse), mit Maximalausleger und Maximalhöhe.

Auf Anfrage

GB

Reactions in service  
Reactions out of service

Without load, ballast (or transport axles), with maximum jib and maximum height.

Consult us

E

Reacciones en servicio  
Reacciones fuera de servicio

Sin carga, sin lastre, (ni tren de transporte), flecha y altura máxima.

Consultarnos

I

Reazioni in servizio  
Reazioni fuori servizio

A vuoto, senza zavorra (ne assali di trasporto) con braccio massimo e altezza massima.

Consultateci

P

Reações em serviço  
Reações fora de serviço

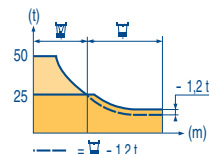
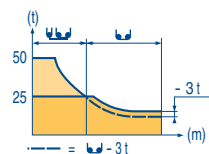
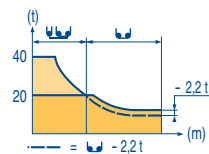
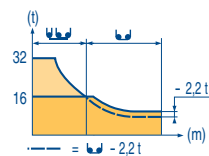
Sem carga (nem trem de transporte)- sem lastro com lança e altura máximas.

Consultar-nos

Courbes de charges  
Lastkurven  
Load diagrams  
Curvas de cargas  
Curve di carico  
Curva de cargas

LZA 2

<b>25 t</b>	5,7 ▶							42,4	45	50	55	60	65	70	m				
	70 m							25	23,4	20,8	18,6	16,9	15,3	14,05	t				
<b>40/50/60 m</b>	5,7 ▶								45	50	55	60			m				
	40/50/60 m							25	22,2	20	18,05			t					
<b>32 t</b>	5,7 ▶														m				
	70 m							31,9	35	40	45	50	55,4	63,1	65	70			
	40/50/60 m							32	28,7	24,6	21,3	18,7	16,5	16	16	15,4	14,15		
<b>40 t</b>	5,7 ▶														m				
	70 m							26,2	30	35	40	45	47,4	52	55	60	65	70	
	40/50/60 m							40	34,3	28,7	24,6	21,3	20	20	18,7	17	15,4	14,15	
<b>50 t</b>	5,7 ▶														m				
	70 m							20,8	25	30	35	37,2	41	45	50	55	60	65	70
	40/50/60 m							50	40,2	32,4	26,8	25	25	22,4	19,8	17,6	15,8	14,3	13
<b>50 t</b>	5,7 ▶														m				
	70 m							19,9	25	30	34,6	35,9	40	45	50	55	60	65	70
	40/50/60 m							50	38	30,2	25	25	21,7	18,4	15,8	13,7	11,9	10,4	9,1
<b>50 t</b>	5,7 ▶														m				
	70 m							21,1	25	30	35	36,8	38,1	40	45	50	55	60	60
	40/50/60 m							50	40,9	32,6	26,7	25	25	23,5	20	17,3	15	13,1	13,1



Mécanismes  
Antriebe  
Mechanisms  
Mecanismos  
Meccanismi  
Mecanismos

LZA 2

													ch - PS	kW	
	<b>25 t</b>	150 LCC 63	m/min	40 → 48 → 60 → 80 → 96	20 → 24 → 30 → 40 → 48					150	110	520 m			
			t	12,5 9,4 6,25 3,1 1,6	25 18,8 12,5 6,2 3,2										
	<b>32 t</b>	250 LCC 80	m/min	46 → 68 → 86 → 108 → 122	23 → 34 → 43 → 54 → 61					250	180	620 m			
			t	16 12 8 4 2	32 24 16 8 4										
	<b>40 t</b>	250 LCC 100	m/min	40 → 52 → 66 → 84 → 96	20 → 26 → 33 → 42 → 48					250	180	488 m			
			t	20 15 10 5 2,5	40 30 20 10 5										
	<b>50 t</b>	250 LCC 125 M5	m/min	31 → 46 → 58 → 74 → 84	15,5 → 23 → 29 → 37 → 42					250	180	410 m			
			t	25 18,75 12,5 6,25 3,1	50 37,5 25 12,5 6,2										
	<b>50 t</b>	250 LCC 125	m/min	30 → 44 → 56 → 72 → 80	15 → 22 → 28 → 36 → 40					250	180	690 m			
			t	25 18,75 12,5 6,25 3,1	50 37,5 25 12,5 6,2										
	<b>25 t</b>	15 DVF 16	m/min	0 → 47 (25 t) - 0 → 63 (12,5 t) - 0 → 76 (6,25 t) - 0 → 100 (3,1 t)								15	11		
	<b>32 t</b>		m/min	0 → 33 (32 t) - 0 → 50 (16 t) - 0 → 67 (8 t) - 0 → 100 (2,5 t)											
	<b>40 t</b>		m/min	0 → 33 (40 t) - 0 → 50 (20 t) - 0 → 67 (10 t) - 0 → 100 (2,5 t)											
	<b>50 t</b>		25 DVF 25	m/min	0 → 33 (50 t) - 0 → 66 (25 t) - 0 → 80 (12,5 t)										
	<b>RVF 192 Optima</b>	tr/min U/min rpm	0 → 0,6								2 x 15	2 x 11			
		m/min	8,5 - 17								8 x 5	8 x 3,7			
<b>CEI 38</b>			<b>IEC 38</b>			<b>kVA</b>									
400 V (+6% -10%) 50 Hz						150 LCC : 185 kVA 250 LCC / 15 DVF : 320 kVA 250 LCC / 25 DVF : 330 kVA					2000 / 14				

MD 900 B



**F**

Levage  
Distribution  
Orientation  
Translation  
Conforme aux directives CEE sur le niveau acoustique

**D**

Heben  
Katzfahren  
Schwenken  
Kranfahren  
Gemäss EWG-Richtlinien für den Schall-Leistungspegel

**GB**

Hoisting  
Trolleying  
Slewing  
Travelling  
In compliance with the EEC Instructions on noise level

**E**

Elevación  
Distribución  
Orientación  
Traslación  
Conforme con las directivas CEE sobre el nivel acústico

**I**

Sollevarmento  
Distribuzione  
Rotazione  
Traslazione  
Conforme alle direttive CEE sul livello acustico

**P**

Elevação  
Distribuição  
Rotação  
Translação  
Conforme as directivas CEE sobre o nível acústico



Document commercial non contractuel. Pour toute information technique se référer à la notice correspondante

Unverbindliches Vertriebsdokument. Für technische Informationen, siehe die entsprechenden Anweisungen.

This commercial document is not legally binding. For any technical information, please refer to the corresponding instructions.

Documento commercial no contractuel. Para cualquier información técnica, ver la noticia correspondiente.

Documento commerciale non vincolante, per tutte le informazioni tecniche fare riferimento al catalogo istruzioni

Documento comercial não contratual. Para qualquer informação técnica complementar consultar as respectivas instruções



Manitowoc Crane Group



18, rue de Charbonnières - B.P.173  
69132 ECULLY Cedex - France

Tél. : (33) 4 72 18 20 20  
Fax. : (33) 4 72 18 20 00  
www.manitowoccrane.com www.potain.com

#### Americas

Tel: +1 920 683 6322  
Tel: +1 717 597 8121

#### Europe - Middle East - Africa

Tel : +(33) 4 72 81 50 00  
Tel : +(44) 191 565 6281

#### Asia - Pacific

Tel: +(65) 6861 7133  
Fax: +(65) 6862 4142

www.manitowoccrane.com

#### MD 900 B

Réf. 2003 48 LZA 2

Copyright.Reproduction interdite © POTAIN 2003