

# CARLO RAIMONDI



Tower Crane

## City Crane MR153

Luffing Jib Crane

### MR153

Progettata per essere montata in un solo giorno, dispone di un braccio da 63 metri. Assemblata con elementi di alto livello, unisce doti di semplicità, efficienza ed affidabilità.

### MR153

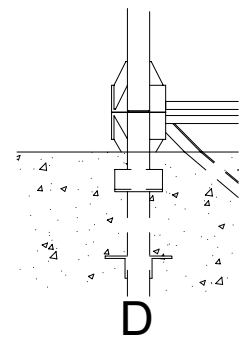
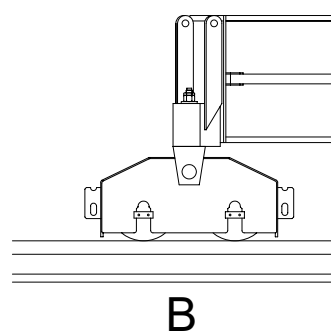
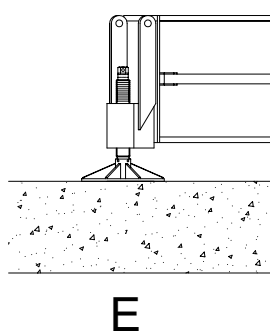
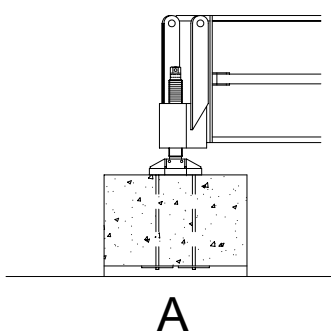
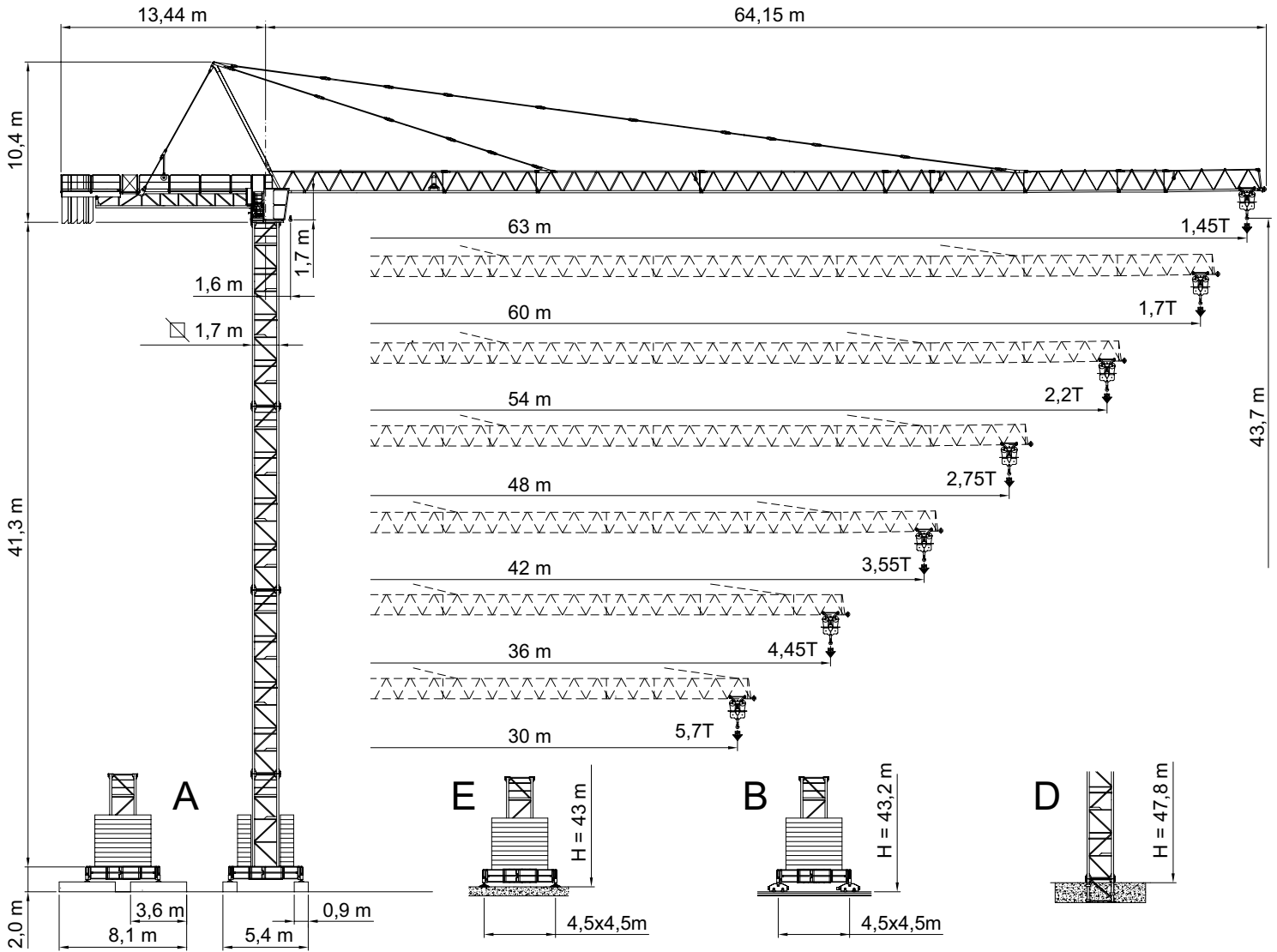
*Designed to be assembled in just one day, this crane is equipped with a 63 m. jib. Manufactured with high-quality components, it is a perfect synthesis of simplicity, efficiency and reliability.*

# City Crane MR 153





GRU A TORRE A MONTAGGIO RAPIDO  
«CITY» TOWER CRANE



A4 FEM1,001



RAGGI E PORTATE  
RADIUS AND S.W.L.  
PORTEE ET CHARGE  
AUSLADUNG UND TRAGFAHIGKEIT

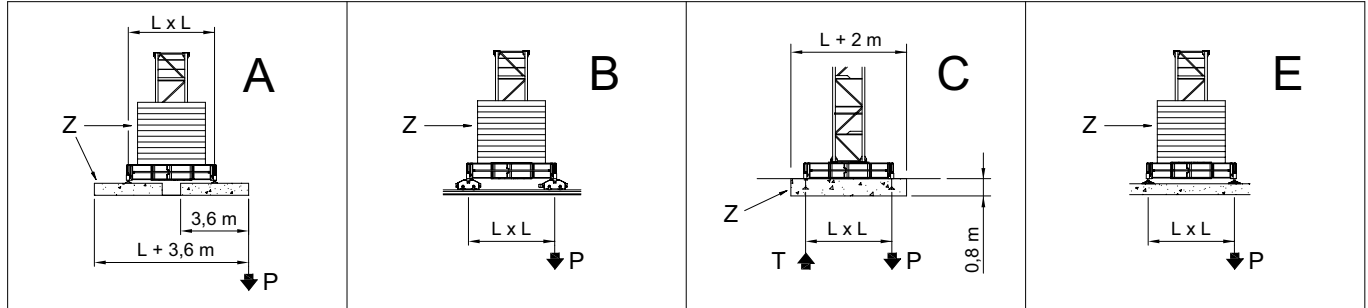
Portata max / Max s.w.l. Charge maxi / Max. Tragfähigkeit		6000 kg.  / 3000 kg. 							8000 kg.  / 4000 kg. 							
Sbraccio / Radius Ausladung / Portée	m.	30	36	42	48	54	60	63	30	36	42	48	54	60	63	
Campo di portata max da Max s.w.l. range from Charge maxi de Max. Tragfähigkeit von	1,7 m a to à bis	28,6	27,7	26,7	24,8	23,5	21,6	20,3	22,3	21,7	21,0	19,6	18,6	17,2	16,3	
Sbraccio (m.) Radius (m.) Portée (m.) Ausladung (m.)	12	6000	6000	6000	6000	6000	6000	6000	8000	8000	8000	8000	8000	8000	8000	
	14	6000	6000	6000	6000	6000	6000	6000	8000	8000	8000	8000	8000	8000	8000	
	16	6000	6000	6000	6000	6000	6000	6000	8000	8000	8000	8000	8000	8000	8000	
	18	6000	6000	6000	6000	6000	6000	6000	8000	8000	8000	8000	8000	8000	7638	7155
	20	6000	6000	6000	6000	6000	6000	6000	8000	8000	8000	7833	7393	6763	6331	
	22	6000	6000	6000	6000	6000	5876	5470	8000	7878	7595	7023	6625	6054	5663	
	24	6000	6000	6000	6000	5861	5314	4943	7367	7134	6875	6353	5989	5468	5110	
	26	6000	6000	6000	5703	5345	4841	4500	6723	6509	6270	5789	5455	4975	4646	
	28	6000	5946	5704	5236	4905	4438	4122	6174	5975	5755	5309	4999	4555	4250	
	30	5700	5495	5269	4834	4525	4091	3796	5700	5515	5310	4895	4607	4193	3909	
	32		5102	4891	4483	4194	3788	3512		5115	4922	4534	4264	3877	3611	
	33		4924	4719	4324	4044	3651	3384		4933	4747	4371	4109	3734	3476	
	34		4756	4558	4175	3903	3522	3263		4762	4581	4217	3963	3600	3350	
	36		4450	4263	3902	3646	3286	3042		4450	4280	3936	3696	3354	3118	
	38			3999	3658	3416	3075	2844			4010	3685	3459	3134	2911	
	40			3763	3439	3209	2886	2667			3768	3460	3245	2937	2726	
	42			3550	3242	3023	2716	2507			3550	3256	3052	2759	2558	
	44				3063	2854	2561	2362				3072	2877	2598	2406	
	46				2899	2700	2420	2230				2904	2718	2451	2267	
	48				2750	2559	2291	2109				2750	2572	2316	2141	
50					2430	2172	1998					2438	2193	2024		
52					2310	2063	1895					2314	2079	1917		
54					2200	1962	1801					2200	1973	1818		
56						1868	1713						1876	1726		
58						1781	1631						1785	1640		
60						1700	1555						1700	1560		
63							1450							1450		

Solo tiro semplice: +100 Kg. / Two reeving only: +100 Kg. / Mouflage à deux brins seulement: +100 Kg. / Nur zwei-stränge: +100 Kg.

BRACCIO E CONTRAPPESO  
JIB AND COUNTERWEIGHT  
FLECHE ET CONTREPOIDS  
AUSLEGER UND GEGENGEWICHTSBALLAST

Braccio / Jib Flèche / Ausleger		(m)	30	36	42	48	54	60	63
Contrappeso / Counterweight Contrepoids / Gegengewicht		(t)	8,68	10,4	12,295	14,2	15,65	19,265	20,715
Composizione Composition Komposition	Tipo / Type	Quantità / Quantity / Nombre / Anzahl							
	A123	2	2	3	2	2	3	3	
	B123	1	1	1		1	1	2	
	C123				2	2	2	2	
	D123		1		1	1	1	1	

ALTEZZA SOTTO-GANCIO, ZAVORRA DI BASE, REAZIONI  
 H.U.H., MAX. BASE BALLAST AND CORNER PRESSURE  
 H.S.C., LEST DE BASE MAXI ET REACTIONS  
 HAKENHOHEN, MAXIMALE ZENTRALBALLASTE UND ECKKRAFT



SU BASE / ON CROSSBASE  
 SUR CHASSIS / AUF KREUZRAHME **L = 3,8 m**

H (m)	max. Z (t)	P (kN)	H (m)	max. Z (t)	P (kN)	H (m)	max. Z (t)	T (kN)	P (kN)	H (m)	max. Z (t)	P (kN)
14,1	74,28	526	13,6	75,4	526	13,1	53,65	129	341	13,4	75,4	526
20,0	74,28	549	19,5	75,4	549	19,0		141	364	19,3	75,4	549
25,9	80,08	591	25,4	81,2	591	24,9		157	392	25,2	81,2	591
31,8	85,88	636	31,3	87,0	636	30,8		176	425	31,1	87,0	636
37,7	97,48	701	37,2	98,6	701	36,7		201	463	37,0	98,6	701

SU BASE / ON CROSSBASE  
 SUR CHASSIS / AUF KREUZRAHME **L = 4,5 m**

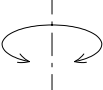
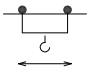
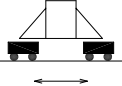
H (m)	max. Z (t)	P (kN)	H (m)	max. Z (t)	P (kN)	H (m)	max. Z (t)	T (kN)	P (kN)	H (m)	max. Z (t)	P (kN)
14,2	51,1	432	13,7	52,2	438	13,2	77,74	91	310	13,5	52,2	433
20,1	51,1	453	19,6	52,2	459	19,1		100	332	19,4	52,2	454
26,0	56,9	491	25,5	58,0	497	25,0		112	356	25,3	58,0	493
31,9	62,7	534	31,4	63,8	540	30,9		128	385	31,2	63,8	535
37,8	74,3	593	37,3	69,6	586	36,8		147	418	37,1	69,6	581
43,7	80,1	703	43,2	81,3	682	42,7		179	488	43,0	81,2	687

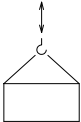


SU BASE / ON CROSSBASE  
 SUR CHASSIS / AUF KREUZRAHME **L = 6 m**

H (m)	max. Z (t)	P (kN)	H (m)	max. Z (t)	P (kN)	H (m)	max. Z (t)	T (kN)	P (kN)	H (m)	max. Z (t)	P (kN)
14,2	33,7	342	13,7	34,8	349	13,2	117,76	33	276	13,5	34,8	344
20,1	33,7	361	19,6	34,8	368	19,1		38	294	19,4	34,8	362
26,0	39,5	393	25,5	40,6	400	25,0		46	314	25,3	40,6	394
31,9	45,3	430	31,4	40,6	424	30,9		56	337	31,2	40,6	418
37,8	45,3	457	37,3	46,4	463	36,8		70	363	37,1	46,4	458
43,7	51,1	527	43,2	52,2	504	42,7		93	415	43,0	52,2	510
49,6	62,7	693	49,1	63,8	608	48,6		167	503	48,9	63,8	675

SU PLINTO / STATIONARY  
 SUR PIEDS DE SCELLEMENT / STATIONAR

H (m)	SU PLINTO / STATIONARY								H (m)	SU PLINTO / STATIONARY
	12,4	18,3	24,2	30,1	36,0	41,9	47,8	52,2		
T (kN)	463	508	553	609	675	781	1085	T (kN)	1348	
P (kN)	650	707	764	831	910	1065	1381	P (kN)	1653	
q max. (Kg/cm <sup>2</sup> )	0,96	1,03	1,10	1,19	1,30	1,58	2,265	q max. (Kg/cm <sup>2</sup> )	1,75	

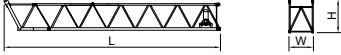

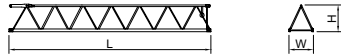
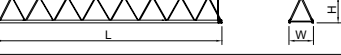


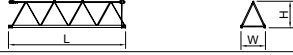



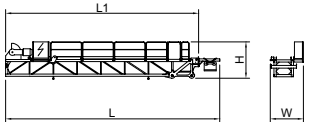
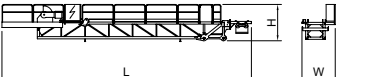
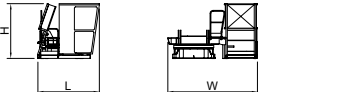
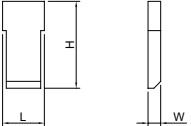
		Velocità / Speed / Vitesse / Geschwindigkeit	Potenza / Power / Puissance / Leistung
Rotazione Slewing Orientation Schwenken		0,26 / 0,48 / 0,7 min <sup>-1</sup>	2 x 4 Kw
Carrello Trolley Chariot Katzfahren		27 / 54 m/min	5,5 Kw
		18,8 / 35,2 / 54 m/min Progressivo - Progressive	5,5 Kw
Traslazione Rail Translation Kranfahren		20 m/min	2 x 3 Kw

Argano Winch Treuril Hubwerk		Marcia Step Vitesse Gang	Carico / velocità - Load / speed Charge / vitesse - Tragfähigkeit / Geschwindigkeit	
				
Tipo Type Type Typ	25 HP 18,4 Kw - 6	1	3000 Kg - 7,5 m/min	6000 Kg - 3,7 m/min
		2	3000 Kg - 30 m/min	6000 Kg - 15 m/min
		3	1500 Kg - 60 m/min	3000 Kg - 30 m/min
	33 HP 24,3 Kw - 8	1	4000 Kg - 7 m/min	8000 Kg - 3,5 m/min
		2	4000 Kg - 28 m/min	8000 Kg - 14 m/min
		3	2000 Kg - 56 m/min	4000 Kg - 28 m/min
	25 HP 18,4 Kw - 6VF INVERTER	1	3000 Kg - 6 m/min	6000 Kg - 3 m/min
		2	3000 Kg - 30 m/min	6000 Kg - 15 m/min
		3	1500 Kg - 60 m/min	3000 Kg - 30 m/min
			1000 Kg - 72 m/min	2000 Kg - 36 m/min
	33 HP 24,3 Kw - 8VF INVERTER	1	4000 Kg - 5,6 m/min	8000 Kg - 2,8 m/min
		2	4000 Kg - 28 m/min	8000 Kg - 14 m/min
		3	2000 Kg - 56 m/min	4000 Kg - 28 m/min
			1300 Kg - 67 m/min	2600 Kg - 33,6 m/min
	50 HP 37 Kw - 8VF INVERTER	1	4000 Kg - 9 m/min	8000 Kg - 5 m/min
		2	4000 Kg - 28 m/min	8000 Kg - 14 m/min
		3	4000 Kg - 45 m/min	4000 Kg - 23 m/min
		4	2509 Kg - 75 m/min	4689 Kg - 38 m/min
		5	1907 Kg - 98 m/min	3516 Kg - 49 m/min

Conforme alla direttiva CEE 84/534 sul livello acustico - In compliance with the EEC 84/534 instruction on noise level - Conforme à directive CEE 84/534 sur le niveau acoustique  
Gemäss EWG 84/534 über Schall - Leistungspegel - Conforme con la direttiva CEE 84/534 sobre el nivel acustico.

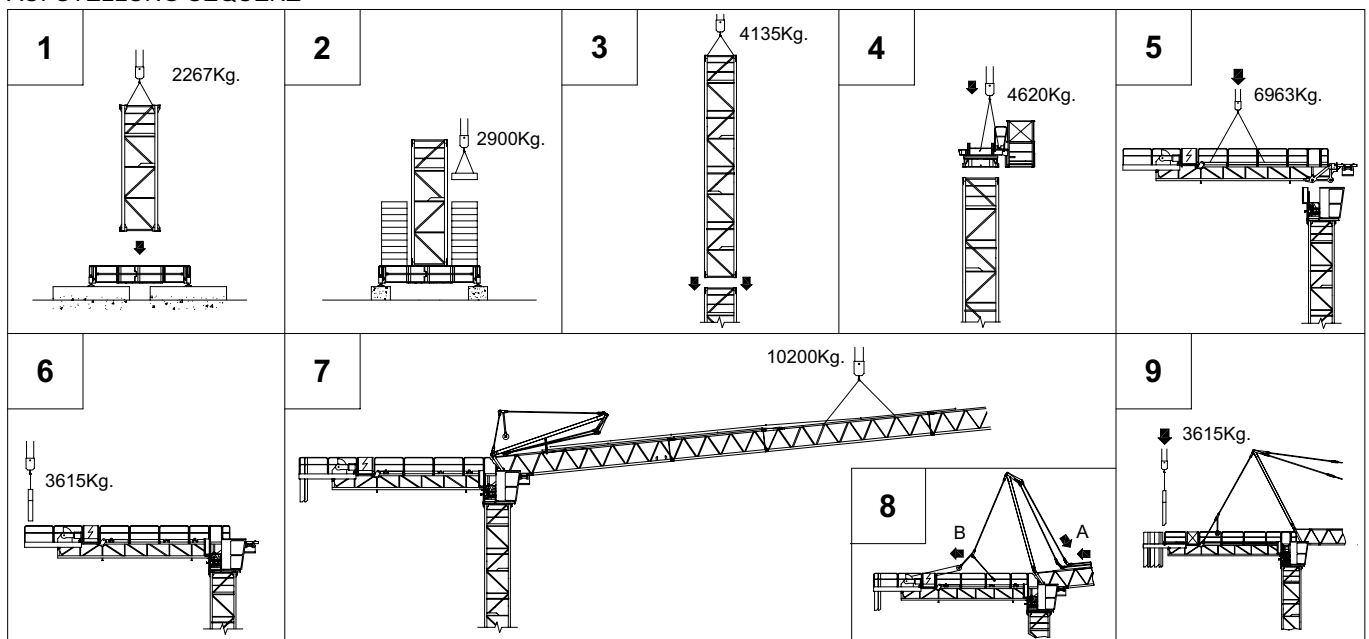
FORZA MOTRICE TOTALE TOTAL INSTALLED POWER PUISSANCE TOTALE DES MOTEURS GESAMT-MOTORENLEISTUNG	18,4 Kw (25HP)	24,3 Kw (33HP)	37 Kw (50HP)
	38 Kw	44 Kw	57 Kw

LISTA DEI PESI / PACKING LIST  
LISTE DE COLISAGE / KOLLI-LISTE

Pos. Item	Pezzi Pieces	Denominazione Description	Schizzo Sketch	Dimensioni Dimensions			Peso Weight (Kg)	
				L	W	H	Unit.	Total.
1	1	<b>Elemento di freccia</b> Jib element Elément de flèche Ausleger	N°1 	11,425	1,300	1,650	1352	1352
	1		N°2 	6,170	1,300	1,477	646	646
	1		N°3 	10,670	1,300	1,477	973	973
	1		N°4 	11,970	1,300	1,477	1070	1070
	1		N°5 	3,170	1,300	1,477	335	335
	1		N°6 	6,160	1,300	1,477	626	626
	2		N°7-8 	6,160	1,300	1,477	448	996
	1		N°9 	3,170	1,300	1,477	285	285
	1		<b>Puntale freccia</b> Jib point Elément pointe Spitzelement 	1,315	1,290	1,525	110	110
2	1	<b>Cuspide</b> A frame Pointe Turmspitze 	7,830	0,400	1,145	735	735	
3	1	<b>Controfreccia,organo di sollev., quadro elettrico,carrello freccia etc.</b> Counterjib, hoisting winch, trolley jib, electrical box etc. Contreflèche tournante, treuil de levage, chariot de flèche, armoire électrique etc. Gegenausleger, Hubwinde, Laufkatze Schaltschrank etc. 	13,250 (L1) 11,950	1,960	2,300	6000 5640	6000 5640	
	1	<b>Controfreccia,organo di sollev., quadro elettrico,carrello freccia,portablocchi.</b> Counterjib, hoisting winch, trolley jib, electrical box, element for counterweight. Contreflèche,treuil de levage,chariot de flèche, armoire électrique,element terminal. Gegenausleger, Hubwinde, Laufkatze Schaltschrank Gegenwichtelement. 	15,680	1,960	2,300	6963	6963	
4	1	<b>Girevole, quadro elettrico, porta-cabina cabina etc.</b> Turntable, electrical box, service and access balcony, cabin etc. Plateforme tournante, cabine, armoire elect. Drehwerk,Schaltschrank,Kabinepodest, Kabine. 	2,470	3,830	2,190	4620	4620	
5	3	<b>Blocchi di contrappeso</b> Counterweight block Contre-poids Gegengewichtsbloecke 	A123	1,475	0,400	3,070	3615	10845
	2		B123	1,475	0,160	3,070	1450	2900
	2		C123	1,475	0,290	3,070	2625	5250
	1		D123	1,475	0,190	3,070	1720	1720

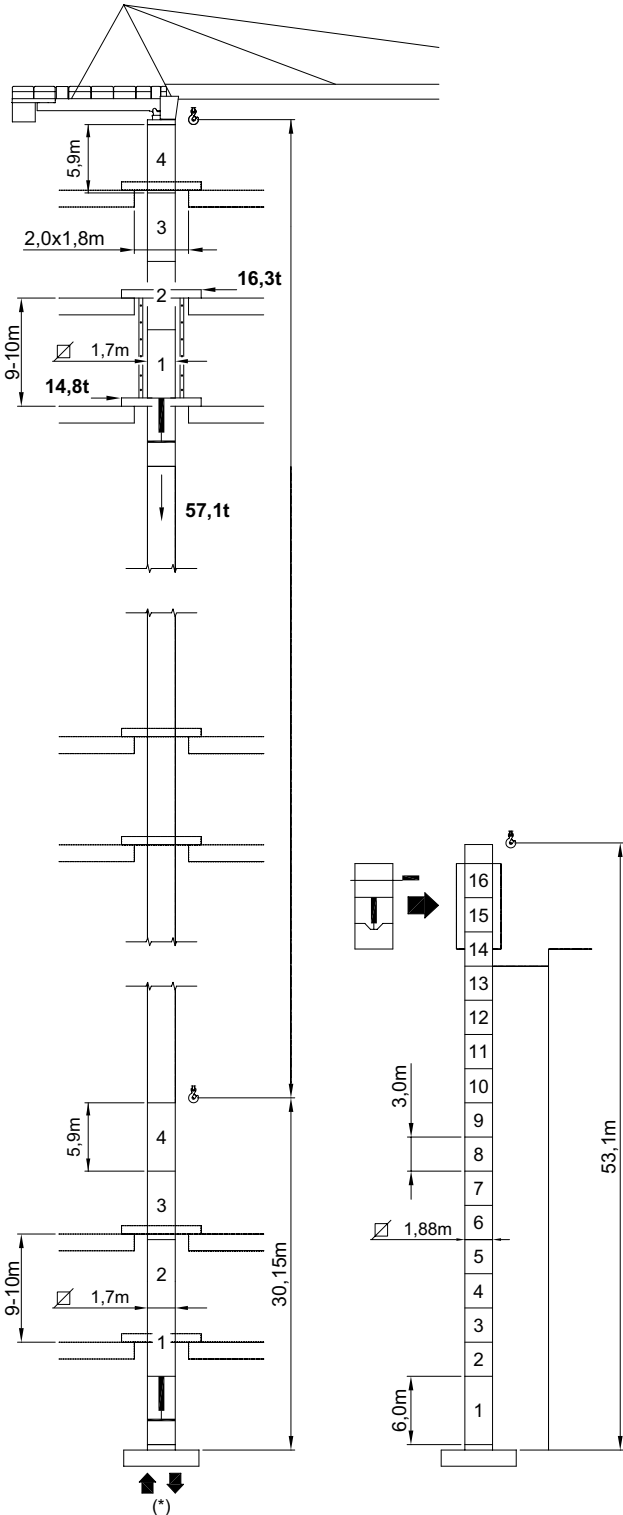
Pos. Item	Pezzi Pieces	Denominazione Description	Schizzo Sketch	Dimensioni Dimensions			Peso Weight (Kg)	
				L	W	H	Unit.	Total.
6	-	<b>Elemento di torre</b> Tower element Elément de mature Turmstück		2,950	1,900	1,700	1335	1335
7	-			5,900	1,900	1,700	2267	2267
8	-			11,800	1,900	1,700	4135	4135
9	1	<b>Tronchetto di fondazione</b> Expendable foundation element Elément a sceller Fundamentanker		1,465	1,980	1,980	830	830
10	1	<b>Trave principale della crociera di base</b> Base main beam Poutre de chassis de base Hauptträger für Kreuzgelenk		6,524	0,780	0,960	2595	2595
11	2	<b>Semitrave della crociera di base</b> Half base beam Semipoutre de chassis de base Halbträger für Kreuzgelenk		3,212	0,680	0,974	1235	2470
12	4	<b>Blocco di appoggio</b> Concrete pad Sabot en béton Betonfuss (B5)		3,600	0,900	0,750	5520	22080
13	2	<b>Bilancino di traslazione folle</b> Driven bogie Boggie fou Fahrschemel ohne motorantrieb		1,315	0,222	0,540	600	1200
14	2	<b>Bilancino di traslazione motorizzato</b> Driving bogie Boggie motorisée Fahrschemel mit motorantrieb		1,427	0,492	0,540	765	1530
15	28	<b>Blocco di zavorra</b> Base ballast block Lest de base Grundballastblöcken (GB3)		3,600	1,200	0,300	2900	81200

SEQUENZA DI MONTAGGIO  
ASSEMBLING SEQUENCE  
SEQUENCE DE MONTAGE  
AUFSTELLUNG SEQUENZ



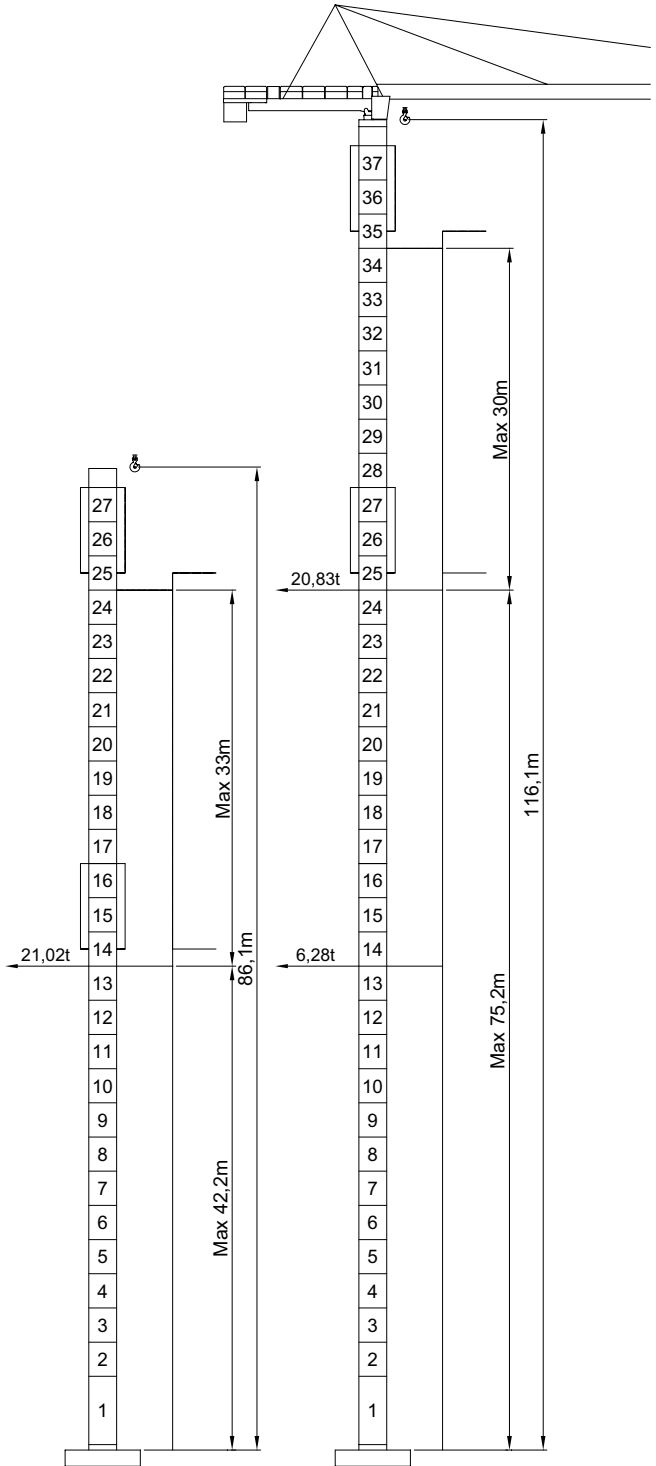
# MR 153 RI

RAMPANTE  
FLOOR CLIMBING  
TELESCOPABLE SUR DALLES  
KLETTERKRANE IM GEBAUDE



# MR 153 HC

A SOPRALZO IDRAULICO  
EXTERNAL CLIMBING  
TELESCOPABLE  
KLETTERKRANE



\* Vedi tabella a pag. 4 - See table at page 4 - Voir table à la page 4 - Siehe tafel an seite 4

