

CARLO RAIMONDI



Tower Crane

Top Less MR108+3

Luffing Jib Crane

MR108+3

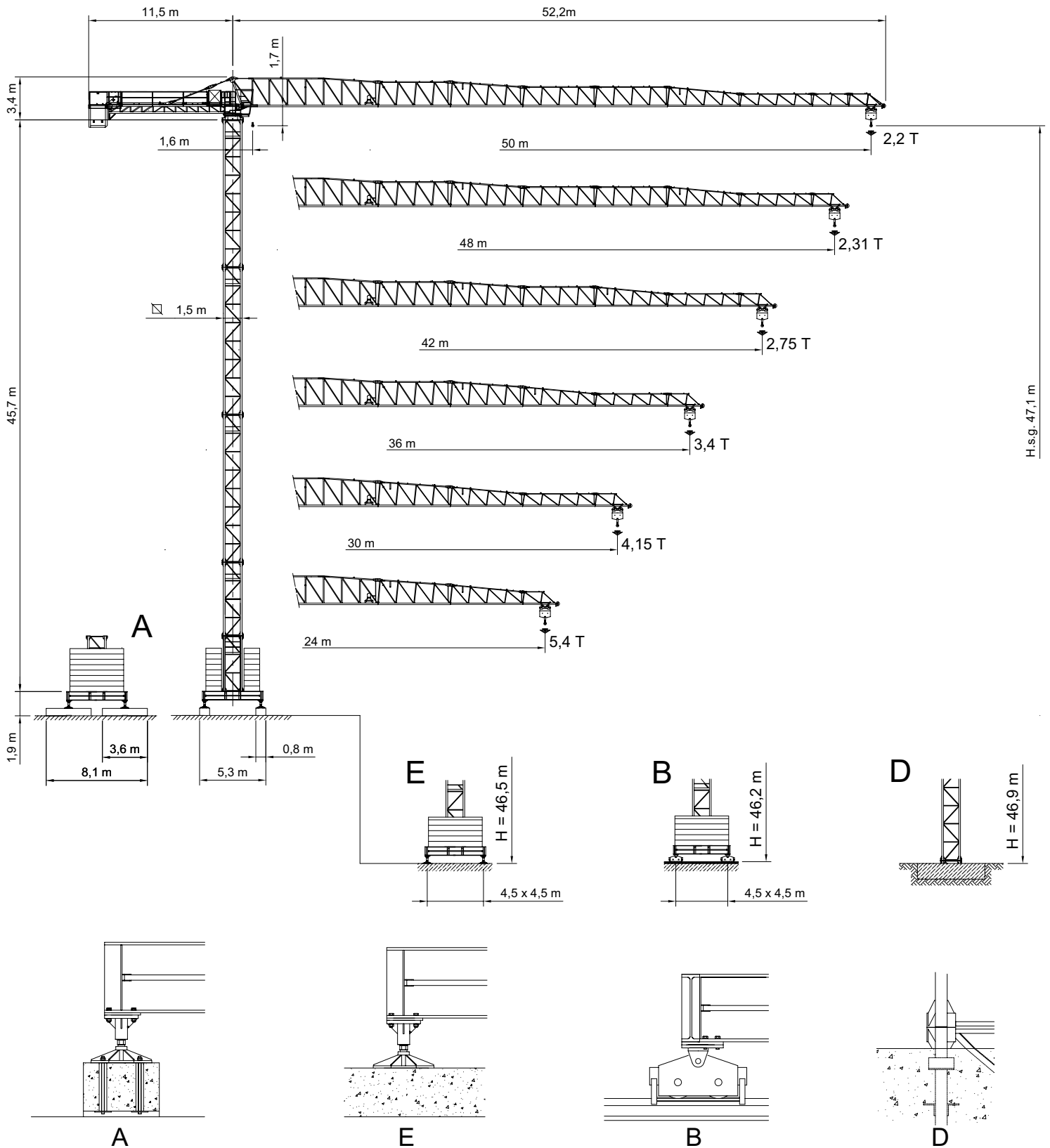
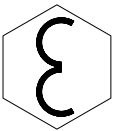
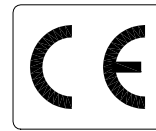
Realizzata con materiali strutturali di alta qualità, dispone di un braccio di 50 metri. Si monta facilmente e in poco tempo, per operare al meglio anche in centri urbani. Un'ottima sintesi di semplicità, efficienza ed affidabilità.

MR108+3




Manufactured with high-level structural materials, this crane is equipped with a 50 m. jib. It can be assembled easily and quickly and is ideal for operation in urban areas too. A perfect synthesis of simplicity, efficiency and reliability.

City Crane MR 108+3

GRU A TORRE A MONTAGGIO RAPIDO
«CITY TOWER CRANE»



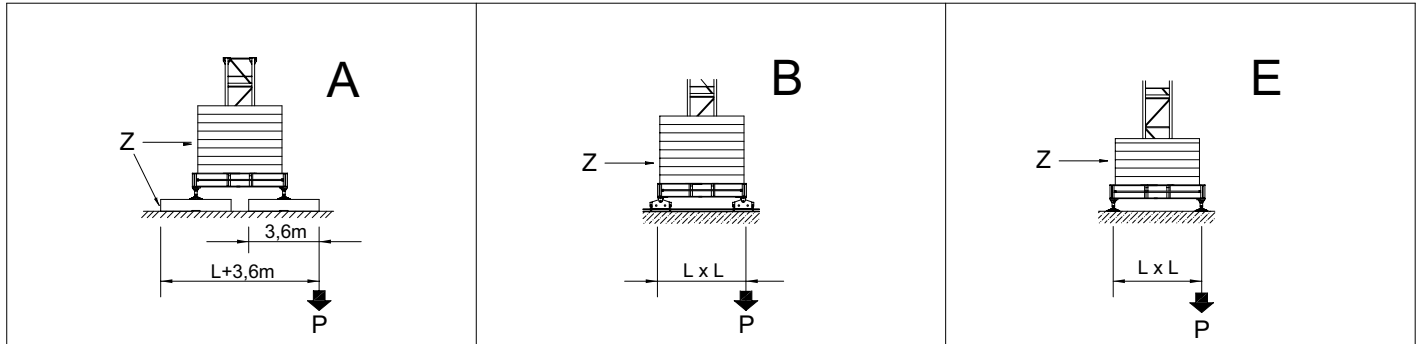
RAGGI E PORTATE
RADIUS AND S.W.L.
PORTEE ET CHARGE
AUSLADUNG UND TRAGFAHIGKEIT

Portata max / Max s.w.l. Charge maxi / Max. Tragfähigkeit		4000 kg. 						8000 kg.  / 4000 kg. 					
Sbraccio / Jib Ausladung / Portée	m.	24	30	36	42	48	50	24	30	36	42	48	50
Campo di portata max da Max s.w.l. range from Charge maxi de Max. Tragfähigkeit von	1,6 m a to à bis	24,0	30,0	31,1	30,0	29,4	29,3	16,9	16,8	16,5	16,1	15,8	15,8
Sbraccio (m.) Radius (m.) Portée (m.) Ausladung (m.)	12	4000	4000	4000	4000	4000	4000	8000	8000	8000	8000	8000	8000
	14	4000	4000	4000	4000	4000	4000	8000	8000	8000	8000	8000	8000
	16	4000	4000	4000	4000	4000	4000	8000	8000	8000	8000	7913	7913
	18	4000	4000	4000	4000	4000	4000	7454	7389	7272	7043	6938	6938
	20	4000	4000	4000	4000	4000	4000	6627	6569	6464	6259	6164	6164
	22	4000	4000	4000	4000	4000	4000	5956	5903	5808	5622	5537	5537
	24	4000	4000	4000	4000	4000	4000	5400	5352	5265	5095	5017	5017
	26		4000	4000	4000	4000	4000		4888	4808	4651	4579	4579
	28		4000	4000	4000	4000	4000		4492	4418	4273	4206	4206
	30		4000	4000	3996	3909	3901		4150	4081	3946	3884	3884
	32			3872	3722	3640	3633			3787	3661	3603	3603
	34			3622	3481	3404	3397			3529	3410	3355	3355
	36			3400	3267	3194	3188			3300	3188	3136	3136
	38				3076	3007	3002				2989	2940	2940
	40				2905	2840	2834				2811	2765	2765
	42				2750	2688	2683				2650	2606	2606
	44					2550	2545					2462	2462
46					2425	2420					2331	2331	
48					2310	2305					2210	2210	
50						2200						2100	

BRACCIO E CONTRAPPESO
JIB AND COUNTERWEIGHT
FLECHE ET CONTREPOID
AUSLEGER UND GEGENGEWICHTSBALLAST

Braccio / Jib Flèche / Ausleger	(m)	24	30	36	42	48	50
Contrappeso / Counterweight Contrepoid / Gegengewicht	(t)	5,49	5,946	8,077	10,208	11,892	14,023
Composizione Composition Komposition	Tipo / Type	Quantità / Quantity / Nombre / Anzahl					
	A99+3	1	2	3	4	4	5
	B99+3	2	1	1	1	2	2

ALTEZZA SOTTO-GANCIO, ZAVORRA DI BASE, REAZIONI
 H.U.H., MAX. BASE BALLAST AND CORNER PRESSURE
 H.S.C., LEST DE BASE MAXI ET REACTIONS
 HAKENHOHEN, MAXIMALE ZENTRALBALLASTE UND ECKKRAFT



SU BASE / ON CROSSBASE
 SUR CHASSIS / AUF KREUZRAHME L = 4,5 m

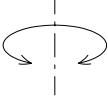
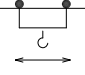
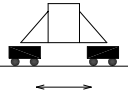
H (m)	max. Z (t)	P (kN)	H (m)	max. Z (t)	P (kN)	H (m)	max. Z (t)	P (kN)
19,1	33,40	319	18,2	35,40	328	18,50	35,40	325
22,05	33,40	329	21,15	35,40	336	21,45	35,40	333
25,0	33,40	339	24,1	35,40	346	24,4	35,40	343
30,9	33,40	363	30,0	41,30	381	30,3	41,30	378
36,8	45,20	430	35,9	41,30	413	36,2	41,30	414
42,7	62,90	596	41,8	59,00	572	42,1	59,00	581
47,1	68,80	744	46,2	64,90	714	46,5	64,90	723

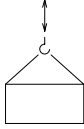


SU BASE / ON CROSSBASE
 SUR CHASSIS / AUF KREUZRAHME L = 3,8 m

H (m)	max. Z (t)	P (kN)	H (m)	max. Z (t)	P (kN)	H (m)	max. Z (t)	P (kN)
19,10	51,10	393	18,20	47,20	384	18,20	47,20	382
22,05	51,10	403	21,15	47,20	394	21,45	47,20	392
25,0	51,10	414	24,1	47,20	405	24,4	47,20	403
30,9	57,00	452	30,0	53,10	443	30,3	53,10	441
36,8	62,90	514	35,9	59,00	495	36,2	59,00	498
42,7	80,60	722	41,8	76,70	688	42,1	76,70	700

SU PLINTO / STATIONARY
 SUR PIEDS DE SCELLEMENT / STATIONAR

	H (m)	17,4	23,3	29,2	35,1	41,0	46,9		H (m)	55,7
	T (kN)	175	173	273	538	793	1091		T (kN)	1553
	P (kN)	340	349	462	743	1013	1328		P (kN)	1782
	q max. (Kg/cm ²)	0,70	0,84	0,90	0,98	1,31	1,86		q max. (Kg/cm ²)	1,70

		Velocità / Speed / Vitesse / Geschwindigkeit	Potenza / Power / Puissance / Leistung
Rotazione Slewing Orientation Schwenken		0,23 / 0,47 / 0,71 min ⁻¹	2 x 3,2 Kw
Carrello Trolley Chariot Katzfahren		27 / 54 m/min	5,5 Kw
		18,8 / 35,2 / 54 m/min Progressivo - Progressive	5,5 Kw
Traslazione Rail Translation Kranfahren		18 m/min	2 x 3 Kw

Argano Winch Treuil Hubwerk		Marcia Step Vitesse Gang	Carico / velocità - Load / speed Charge / vitesse - Tragfähigkeit / Geschwindigkeit	
				
Tipo Type Type Typ	25 HP 18,4 Kw - 6	1	3000 Kg - 7,5 m/min	6000 Kg - 3,7 m/min
		2	3000 Kg - 30 m/min	6000 Kg - 15 m/min
		3	1500 Kg - 60 m/min	3000 Kg - 30 m/min
	33 HP 24,3 Kw - 8	1	4000 Kg - 7 m/min	8000 Kg - 3,5 m/min
		2	4000 Kg - 28 m/min	8000 Kg - 14 m/min
		3	2000 Kg - 56 m/min	4000 Kg - 28 m/min
	25 HP 18,4 Kw - 6VF INVERTER	1	3000 Kg - 6 m/min	6000 Kg - 3 m/min
		2	3000 Kg - 30 m/min	6000 Kg - 15 m/min
		3	1500 Kg - 60 m/min	3000 Kg - 30 m/min
			1000 Kg - 72 m/min	2000 Kg - 36 m/min
	33 HP 24,3 Kw - 8VF INVERTER	1	4000 Kg - 5,6 m/min	8000 Kg - 2,8 m/min
		2	4000 Kg - 28 m/min	8000 Kg - 14 m/min
		3	2000 Kg - 56 m/min	4000 Kg - 28 m/min
			1300 Kg - 67 m/min	2600 Kg - 33,6 m/min

Conforme alla direttiva CEE 84/534 sul livello acustico - In compliance with the EEC 84/534 instruction on noise level - Conforme à directive CEE 84/534 sur le niveau acoustique
Gemäss EWG 84/534 über Schall - Leistungspegel - Conforme con la direttiva CEE 84/534 sobre el nivel acustico.

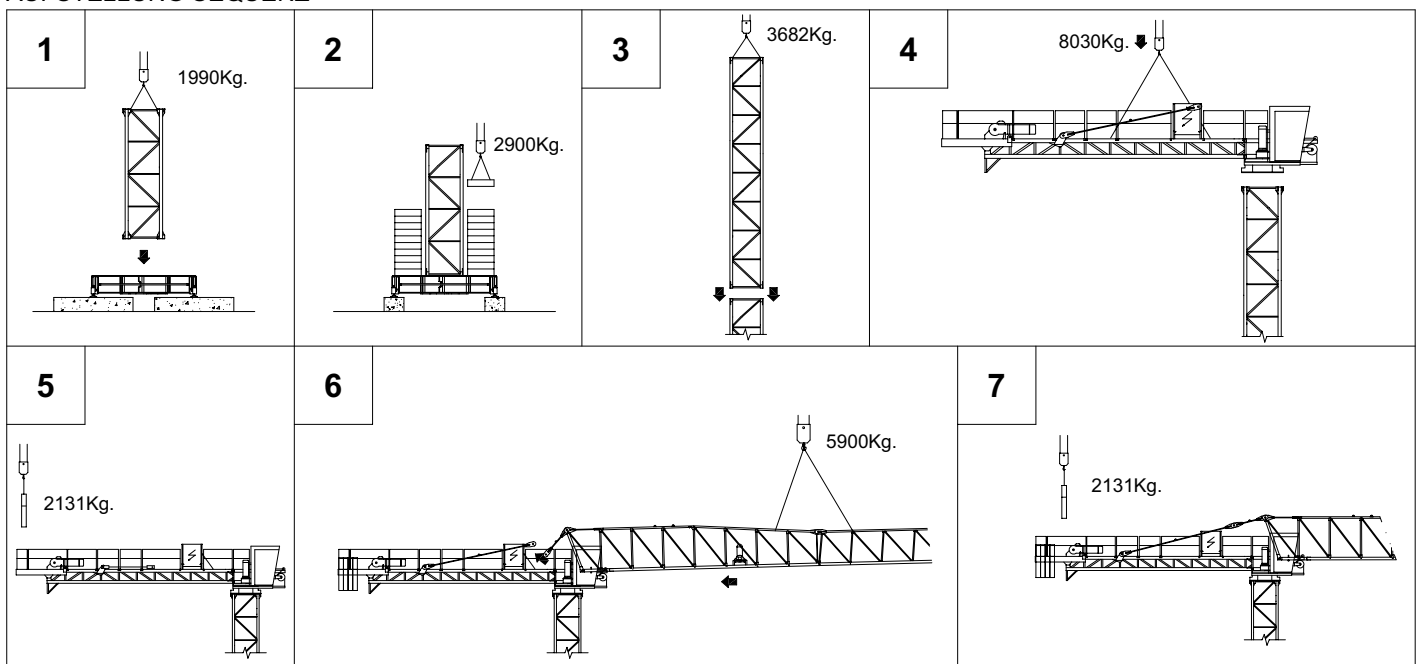
FORZA MOTRICE TOTALE TOTAL INSTALLED POWER PUISSANCE TOTALE DES MOTEURS GESAMT-MOTORENLEISTUNG	18,4 Kw (25HP)	24,3 Kw (33HP)
	37 Kw	43 Kw

LISTA DEI PESI / PACKING LIST
LISTE DE COLISAGE / KOLLI-LISTE

Pos. Item	Pezzi Pieces	Denominazione Description	Schizzo Sketch	Dimensioni Dimensions			Peso Weight (Kg)		
				L	W	H	Unit.	Total.	
1	1	Elemento di freccia Jib element Elément de flèche Ausleger	N°1		11,960	1,200	2,380		2021
	1		N°2		6,110	1,200	2,070		770
	1		N°3		6,100	1,200	2,070		711
	1		N°4		6,070	1,200	1,660		570
	1		N°5		6,030	1,200	1,640		501
	1		N°7		6,015	1,200	1,620		425
	1		N°8		5,985	1,200	1,070		387
	1		N°9		2,985	1,200	1,070		160
	1		Puntale freccia Jib point Elément pointe Spitzelement		2,860	1,200	1,070		185
	2	1	Controfreccia girevole,organo di sollev. quadro elettrico, carrello freccia etc. Counterjib-turntable, hoisting winch, trolley jib, electrical box etc. Contreflèche tournante, treuil de levage, chariot de flèche, armoire électrique etc. Gegenausleger, Hubwinde, Drehwerk Laufkatze, Schaltschrank etc.		11,900	2,230	2,550		6885
1		Controfreccia girevole,organo di sollev. quadro elettr., carrello freccia,cabina. Counterjib-turntable, hoisting winch, acces balcony, electrical box, trolley jib, cabin etc. Contreflèche tournante,treuil de levage,chariot de flèche, armoire électrique, cabine. Gegenausl., Drehwerk, Hubwinde, Laufkatze, Kabine, Schaltschrank, Kabinepodest.		11,900	3,380	2,550		7480	
3	1	Controfreccia girevole,organo sollev., quadro elettrico, carrello freccia,cabina elemento porta-blocchi. Counterjib-turntable, hoisting winch, cabin,trolley jib, electrical box, acces balcony,terminal element. Contrefl. tournante,treuil de levage,chariot de flèche armoire électrique, cabine et élément terminal. Gegenausl., Drehwerk, Hubwinde, Laufkatze, Kabine Schaltschrank, Kabinepodest, Gegengewichtelement.		13,500	3,380	2,550		8030	
4	5	Blocchi di contrappeso Counterweight block Contre-poids Gegengewichtsbloecke		A99+3	1,430	0,265	2800	2131	10655
	2			B99+3	1,430	0,210	2,800	1684	3368

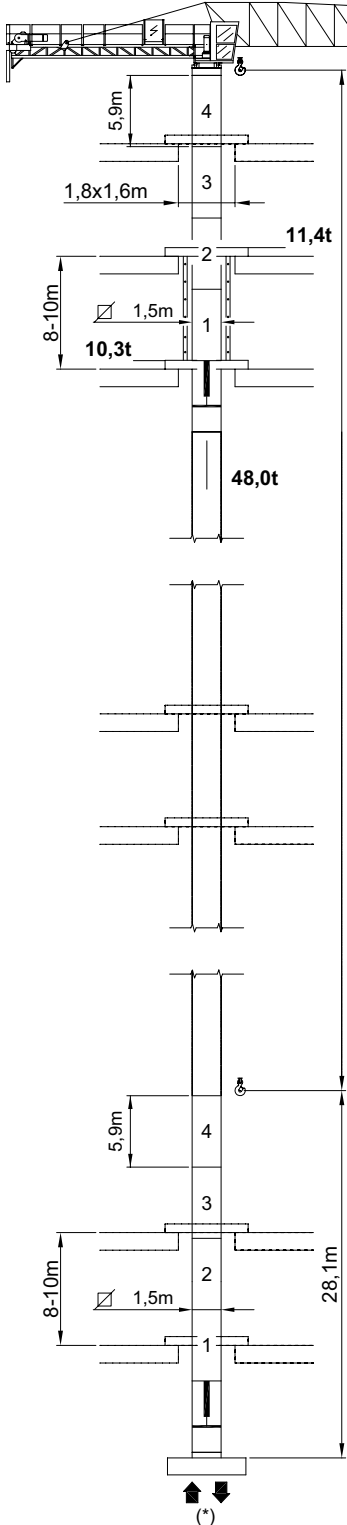
Pos. Item	Pezzi Pieces	Denominazione Description	Schizzo Sketch	Dimensioni Dimensions			Peso Weight (Kg)		
				L	W	H	Unit.	Total.	
6	-	Elemento di torre Tower element Elément de mature Turmstück		2,950	1,700	1,500	1172	1172	
7	-			4,425	1,700	1,500	1590	1590	
8	-			5,900	1,700	1,500	1990	1990	
9	-			11,800	1,700	1,500	3682	3682	
10	1	Tronchetto di fondazione Expendable foundation element Elément a sceller Fundamentanker		1,465	1,780	1,780	780	780	
11	1	Trave principale della crociera di base Base main beam Poutre de chassis de base Hauptträger für Kreuzgelenk		4,5x4,5mt	6,530	0,710	0,760	2120	2120
				3,8x3,8mt	5,535	0,710	0,760	1460	1460
12	2	Semitrave della crociera di base Half base beam Semipoutre de chassis de base Halbträger für Kreuzgelenk		4,5x4,5mt	3,200	0,590	0,770	1030	2060
				3,8x3,8mt	2,620	0,590	0,770	940	1880
13	4	Blocco di appoggio Concrete pad Sabot en béton Betonfuss (B2)		3,600	0,800	0,600	3925	15700	
14	2	Bilancino di traslazione folle Driven bogie Boggie fou Fahrschemel ohne motorantrieb		1,080	0,230	0,515	415	830	
15	2	Bilancino di traslazione motorizzato Driving bogie Boggie motorisée Fahrschemel mit motorantrieb		1,550	0,500	0,515	535	1070	
16	26	Blocco di zavorra Base ballast block Lest de base Grundballastblöcken (GB3)		3,600	1,200	0,300	2900	75400	

SEQUENZA DI MONTAGGIO
ASSEMBLING SEQUENCE
SEQUENCE DE MONTAGE
AUFSTELLUNG SEQUENZ



MR 108+3 RI

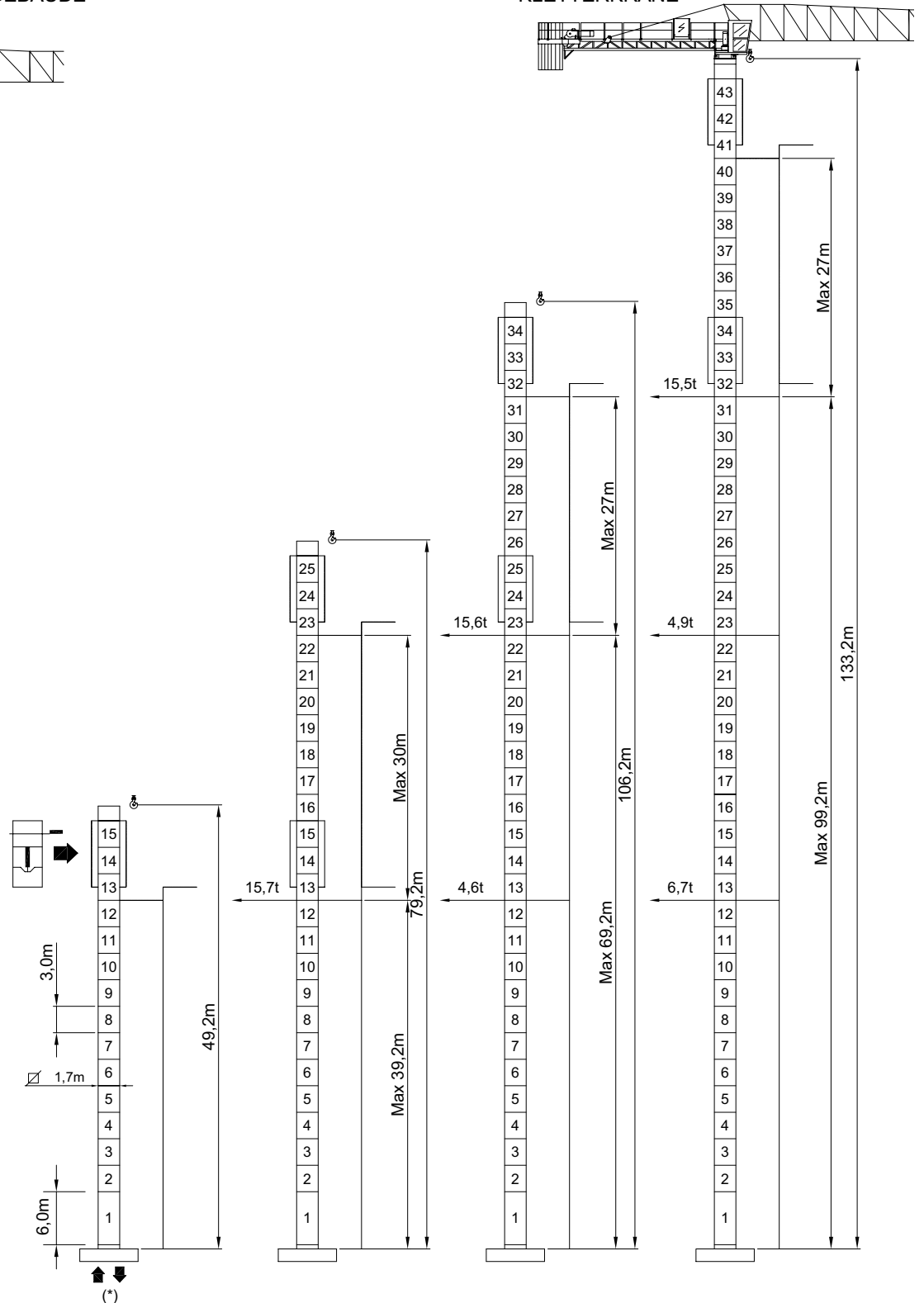
RAMPANTE
FLOOR CLIMBING
TELESCOPABLE SUR DALLES
KLETTERKRANE IM GEBAUDE



edi tabella a pag. 4 - See table at page 4 - Voir table à la page 4 - Siehe tafel an seite 4

MR 108+3 HC

A SOPRALZO IDRAULICO
EXTERNAL CLIMBING
TELESCOPABLE
KLETTERKRANE



CARLO RAIMONDI FU R. SPA

Corso Garibaldi, 253
20025 Legnano - ITALY
Tel. 0331 / 548061-450239
FAX. 0331 / 450400
E-MAIL - info@raimondigruppo.it