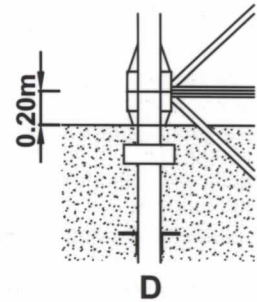
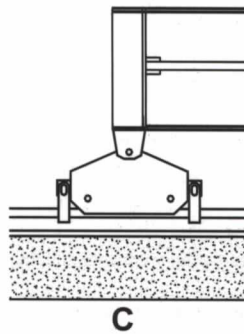
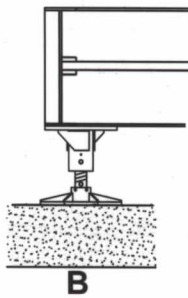
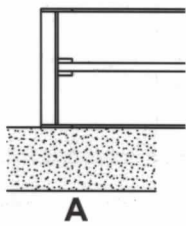
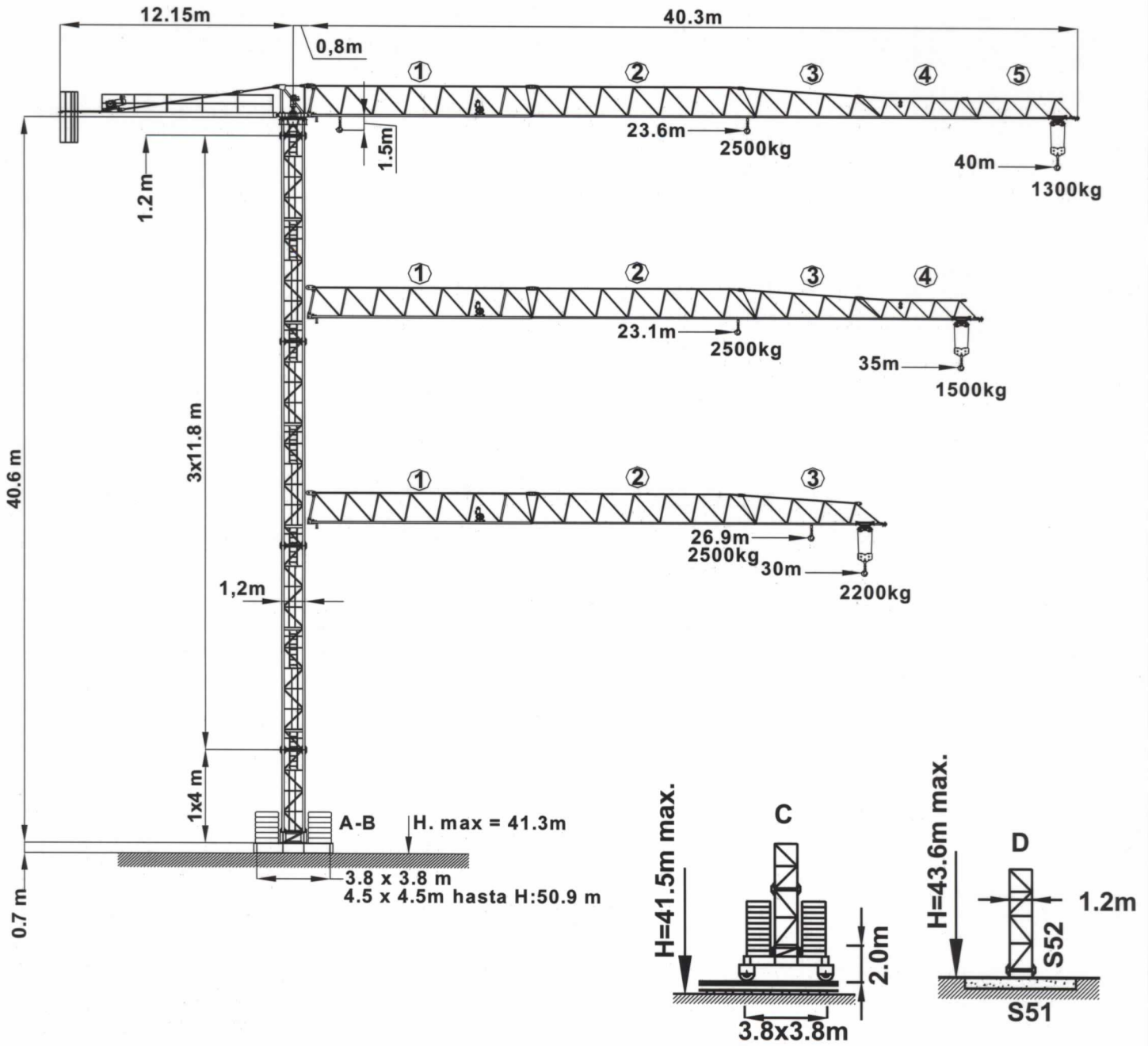


45/40TL

GRÚA TORRE
TOWER CRANE
GRU A TORRE



DIN/FEM CE

Según DIN 15018 // FEM 1001-98
According to DIN 15018 // FEM 1001-98
Secondo DIN 15018 // FEM 1001-98
Cumple directiva 98/37/CE
According to directive 98/37/CE
Compie direttiva 98/37/CE

45/40TL

GRÚA TORRE TOWER CRANE GRU A TORRE



	Alcance Radius Sbraccio (m)	Campo C. Max Max swl range from to Campo di carico mass. 2500 Kg	40	39	37	35	33	30	28	26	25	24	20	18	16	14	12	10
			2500 kg 	40	2.1-23.6	1300	1343	1438	1544	1664	1873	2038	2230	2338	2455	2500	2500	2500
35	2.1-23.1					1500	1616	1821	1982	2169	2274	2389	2500	2500	2500	2500	2500	2500
30	2.1-26.9							2200	2389	2500	2500	2500	2500	2500	2500	2500	2500	2500

	Alcance Radius Sbraccio (m)	Campo C. Max Max swl range from to Campo di carico mass. 4000 Kg	40	38	35	33	30	27	24	21	18	16	14	12	10	9	8	6
			2500 kg 	40	2.1-15	1150	1237	1387	1503	1706	1956	2270	2678	3228	3715	4000	4000	4000
35	2.1-14.7				1350	1463	1662	1907	2215	2614	3153	3631	4000	4000	4000	4000	4000	4000
4000 kg 	30	2.1-17.2					2050	2339	2703	3175	3811	4000	4000	4000	4000	4000	4000	4000

CARGA/VELOCIDAD (kg/m/min) LOAD/SPEED (kg/m/min) / CARICO/VELOCITA' (kg/m/min)			MECANISMOS MECHANISM / MECANISMI		
Potencia / Power Potenza	15 Hp (11.5 Kw) - 2.5 t				
	1ª	2500 kg - 8 m/min			
	2ª	2500 kg - 29 m/min			
	3ª	1300 kg - 58 m/min			
	1ª	3000 kg - 4 m/min	0.3 - 0.6 - 0.9 rpm	30/60 m/min	20 m/min
	2ª	3000 kg - 15 m/min	1 x 65 Nm	1.0/1.8 kw	2 x 2.2 kw
	3ª	2600 kg - 30 m/min			

ALCANCE RADIUS / SBRACCIO	40 m		35 m		30 m		
CONTRAPESO AÉREO COUNTERWEIGHT AIR CONTRAPPESO AEREO	A	B	B	C	A	B	
	2	2	4	1	2	1	
	7400 kg		6450 kg		6000 kg		
LASTRE DE LA BASE / BASE BALLAST BLOCKS / ZAVORRA ALLA BASE							
	CON BASE DE WITH BASE OF CON BASE DA	18.6 m	24.6 m	30.6 m	36.6 m	40.6 m	50.9 m
	3.8x3.8m	45.6 t	45.6 t	60.8 t	60.8 t	76 t	-

PESO DE CONSTRUCCIÓN APROXIMADO DEAD WEIGHT APPROX / PESO DI COSTRUZIONE APPROSSIMATO		23 420 kg	
POTENCIA REQUERIDA Y CONDUCTORES REQUIRED POWER AND CONDUCTORS POTENZA ELETTRICA NECESSARIA E CONDUTTORI	CON ELEVACIÓN 11.5 Kw / CON SOLLEVAMENTO 11.5 Kw		
	24 KVA - 400 V - 50 Hz		
	25 m	50 m	100 m
	4x16mm ²	4x16mm ²	4x25mm ²

PESO Y DIMENSIONES DE LOS ELEMENTOS DE LA GRÚA WEIGH AND DIMENSIONS OF THE CRANE / PESO E DIMENSIONI DEI ELEMENTI DELLA GRU		L (m)	W (m)	H (m)	Peso (kg)	
ELEMENTO DE PLUMA Nº1 JIB ELEMENT Nº 1 ELEMENTO DI BRACCIO		11.74	1	1.7	1544	
ELEMENTO INTERMEDIO DE PLUMA INTERMEDIATE JIB ELEMENT ELEMENTO INTERMEZZO DI BRACCIO		2	11.74	1	894	
		3	6.5	1	488	
		4	5	1	312	
		5	5	1	223	
CONTRAPLUMA COUNTER JIB CONTROBRACCIO		11.49	0.28	1.65	2050	
ELEMENTO DE TORRE TOWER ELEMENT ELEMENTO DI TORRE		11.8	1.2	1.38	3000	
		4.0	1.2	1.38	1100	
BLOQUE DE CONTRAPESO COUNTERWEIGHT BLOCKS BLOCCO DI CONTRAPPESO		A	2.94	0.30	1.25	2300
		B	2.94	0.18	1.25	1400
		C	1.70	0.18	1.25	850
BLOQUE DE LASTRE DE LA BASE BASE BALLAST BLOCK BLOCCO DI ZAVORRA ALLA BASE		4.4	1.2	0.3	3800	
CABEZA DE TORRE TOWER HEAD TESTA DI TORRE		2.94	1.8	1.7	3000	
GANCHO Y CARRO HOOK AND TROLLEY GANCIO E CARRELLO		0.75	0.12	1.40	160	
		0.96	1.10	0.62	120	
VIGA PRINCIPAL DE LA BASE MAIN BEAM OF THE BASE TRAVE PRINCIPALE DELLA GRU		5.72	0.67	0.65	1560	
SEMIVIGA SECUNDARIA DE LA BASE HALF BEAM SECONDARY OF THE BASE SEMITRAVE SECONDARIA DELLA BASE		2.77	0.45	0.665	1500	

GFS se reserva el derecho a modificaciones sin previo aviso.

Subject to modifications by **GFS**, without previous warning.

Il fabbricante si riserva il diritto di fare qualunque modifica senza preavviso.

ABRIL 2005

GFS

Autovía Murcia - San Javier, Km. 0'8
30155 • Baños y Mendigo (Murcia)

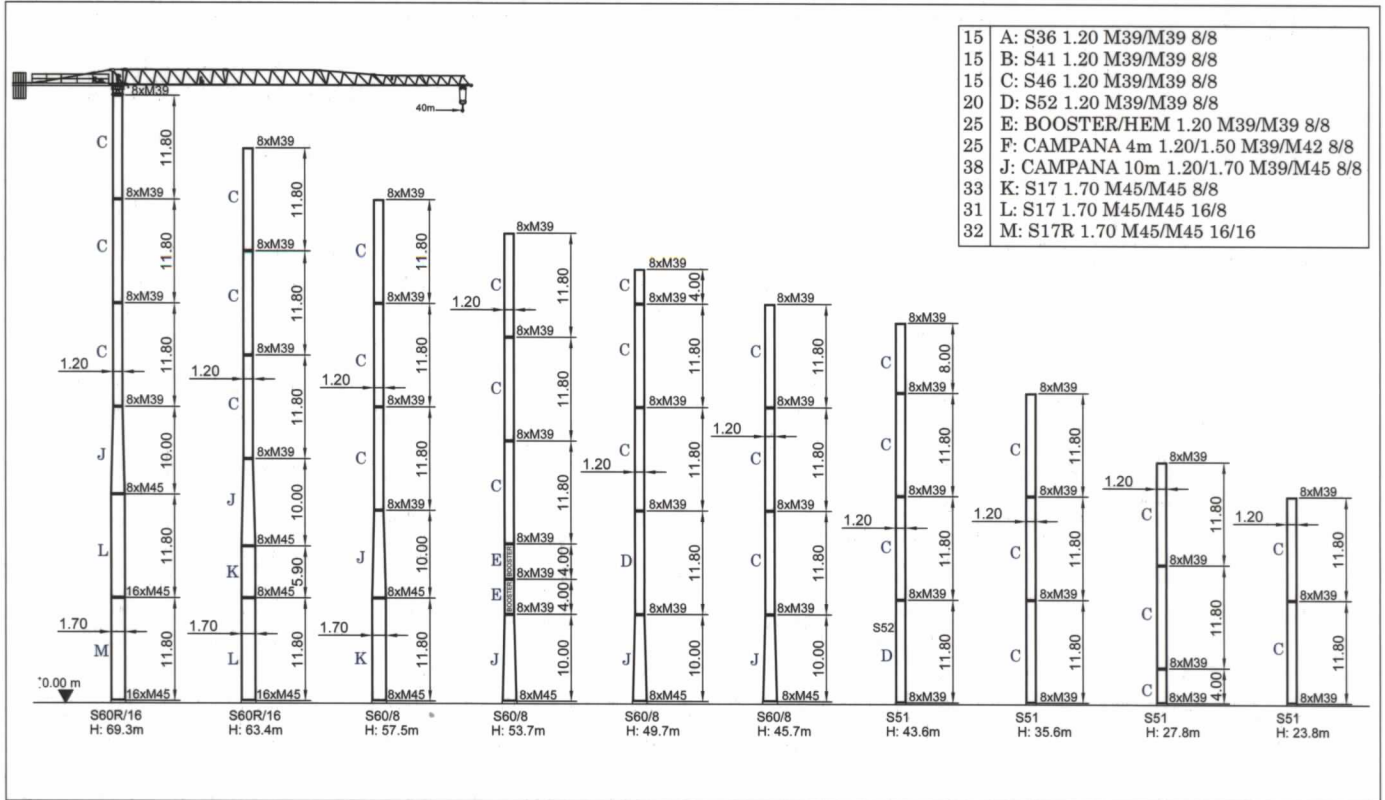
Tlf.: +34 968 83 70 81 Fax: +34 968 83 70 82

45/40TL

GRÚA TORRE TOWER CRANE GRU A TORRE



COMPOSICIÓN DE TORRE / TOWER COMPOSITION / STRUTTURA DELLA TORRE



MONTAJE HIDRÁULICO / HYDRAULIC ASSEMBLY / MONTAGGIO IDRAULICO

