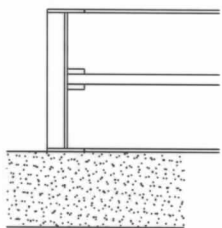
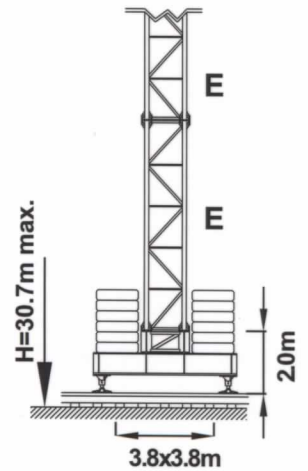
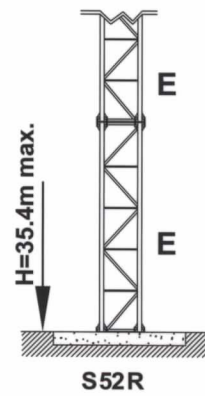
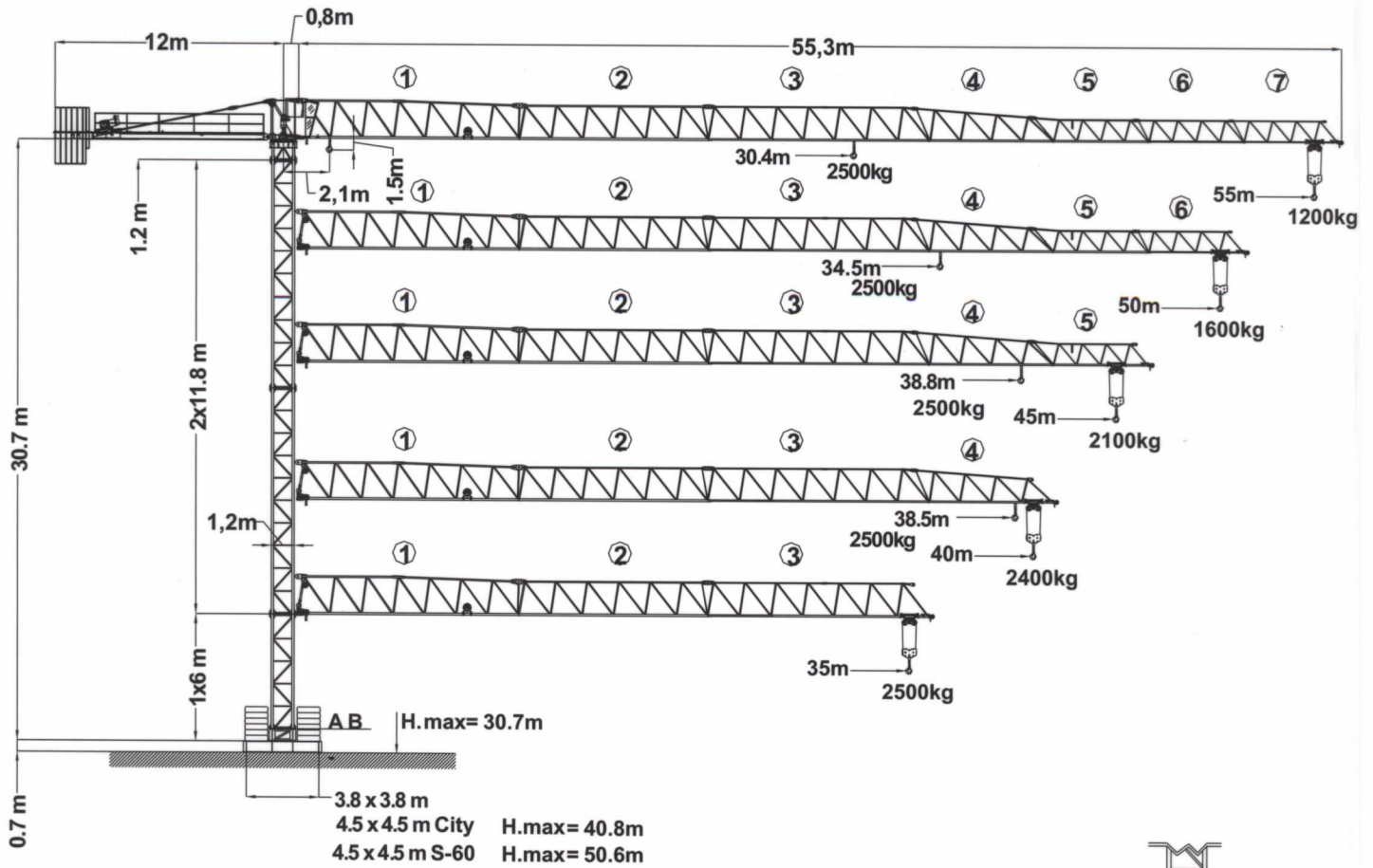


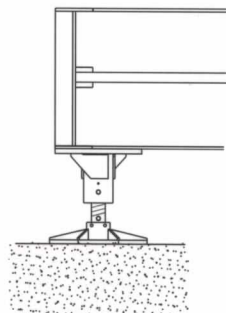
# 55TL

## GRÚA TORRE TOWER CRANE GRU A TORRE

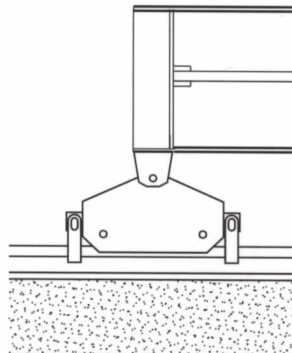
GFS



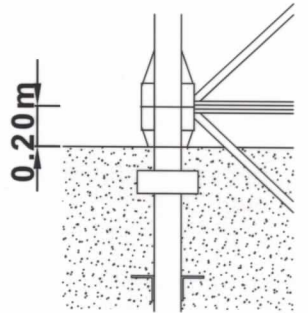
A



B



C



D

DIN/FEM

DIN 15018 // FEM 1001-98

Conforme con la direttiva 98/37/CE


According to EC 98/37 instruction


Conforme alla direttiva 98/37/CE


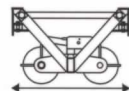


# 55TL

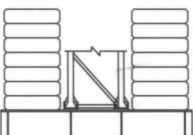
# GRÚA TORRE TOWER CRANE GRU A TORRE

GFS

	Alcance Radius Sbraccio (m)	Campo C. Max Max swl range Campo di carico mass. 2500Kg	55	52	50	48	45	43	40	39	37	35	33	30	28	26	25	24
			2500 kg 	55	2.1-30.4	1200	1292	1360	1434	1557	1648	1804	1861	1984	2123	2278	2500	2500
50	2.1-34.5				1600	1684	1824	1928	2104	2169	2310	2468	2500	2500	2500	2500	2500	2500
45	2.1-38.8						2100	2217	2416	2489	2500	2500	2500	2500	2500	2500	2500	2500
40	2.1-38.5								2400	2472	2500	2500	2500	2500	2500	2500	2500	2500
35	2.1-35											2500	2500	2500	2500	2500	2500	2500

	Alcance Radius Sbraccio (m)	Campo C. Max Max swl range Campo di carico mass. 5000Kg	55	52	50	48	45	43	40	38	35	33	30	27	24	21	18	15
			5000 kg 	55	2.1-15.8	1050	1139	1205	1276	1395	1484	1634	1747	1943	2093	2358	2683	3092
50	2.1-18				1450	1531	1668	1769	1941	2071	2295	2468	2771	3143	3612	4221	5000	5000
45	2.1-20.3						1950	2065	2259	2407	2660	2855	3198	3619	4150	5000	5000	5000
40	2.1-20.2								2250	2396	2649	2843	3185	3605	4134	4820	5000	5000
35	2.1-20.2										2650	2844	3186	3606	4135	4822	5000	5000

CARGA / VELOCIDAD (kg/m/min) LOAD / SPEED • CARICO / VELOCITÀ				MECANISMOS MECHANISMS / MECCANISMI		
Potencia Power/Potenza	25 Hp (18.5 Kw) 5.0 t	25 Hp INV (18.5 Kw) 5.0 t	33 Hp INV (24 Kw) 5.0 t			
	1ª 2500 kg – 8 m/min 2ª 2500 kg – 31 m/min 3ª 1500 kg – 62 m/min	2500 kg – 8 m/min 2500 kg – 31 m/min 1500 kg – 62 m/min	2500 kg – 40 m/min 2000 kg – 60 m/min 1500 kg – 80 m/min			
	1ª 5000 kg – 4 m/min 2ª 5000 kg – 16 m/min 3ª 2600 kg – 32 m/min	5000 kg – 4 m/min 5000 kg – 16 m/min 2600 kg – 31 m/min	5000 kg – 20 m/min 5000 kg – 30 m/min 3000 kg – 40 m/min	2 x 40 Nm	3 kw	2 x 2.2 kw

ALCANCE RADIUS / SBRACCIO	55 m			50 m		45 m		40 m		35 m		
CONTRAPESO COUNTERWEIGHT CONTRAPPESO	A	B	C	A	C	A	C	A	C	A	B	C
	5	1	1	5	2	5	1	5	2	3	1	1
	13750 kg			13200 kg		12350 kg		10900 kg		9150 kg		
LASTRE DE LA BASE / BASE BALLAST BLOCKS / ZAVORRA ALLA BASE												
	CON BASE ONCROSSBASE		24.8m	28.6m	36.5m	40.5 m	50.6m					
	3.8x3.8m		45.6t	53.2t	-	-	-					
	4.5x4.5 m City		-	-	60.8t	76.0t	-					
	4.5x4.5 m S-60		-	-	-	-	121.6t					

PESO DE CONSTRUCCIÓN APROXIMADO DEAD WEIGHT APPROX. / PESO DI COSTRUZIONE APPROSSIMATO		41 493kg	
POTENCIA REQUERIDA Y CONDUCTORES REQUIERED POWER AND CONDUCTORS POTENZA ELETTRICA NECESSARIA E CONDUTTORI	CON ELEVACIÓN 18.5 Kw / 18.5Kw Hoisting / Con sollevamento 18.5 Kw		
	31 KVA - 400 V - 50 Hz		
	25 m	50 m	100 m
	4x25mm <sup>2</sup>	4x25mm <sup>2</sup>	4x25mm <sup>2</sup>



PESO Y DIMENSIONES DE LOS ELEMENTOS DE LA GRÚA WEIGHT AND DIMENSIONS OF THE CRANE / PESO E DIMENSIONI DEI ELEMENTI DELLA GRU		L (m)	W (m)	H (m)	Peso (kg)	
<b>ELEMENTO DE PLUMA Nº 1</b> JIB HEEL SECTION ELEMENTO DI BRACCIO Nº 1		11.74	1	1.85	2314	
<b>ELEMENTO INTERMEDIO DE PLUMA</b> INTERMEDIATE JIB SECTION ELEMENTO INTERMEZZO DI BRACCIO		2	10	1	1.8	1224
		3	11.5	1	1.8	1064
		4	6.5	1	1.8	502
		5	5	1	1.3	312
		6	5	1	1.19	262
		7	5	1	1.18	206
	<b>CONTRAPLUMA</b> COUNTER JIB CONTROBRACCIO		11.49	0.32	1.83	3240
<b>ELEMENTO DE TORRE</b> TOWER SECTION ELEMENTO DI TORRE		11.8	1.2	1.38	3782	
		4.0	1.2	1.38	1300	
<b>BLOQUE DE CONTRAPESO</b> COUNTERWEIGHT BLOCKS BLOCCO DI CONTRAPPESO		A	2.94	0.30	1.25	2300
		B	2.94	0.18	1.25	1400
		C	1.70	0.18	1.25	850
<b>BLOQUE DE LASTRE DE LA BASE</b> BASE BALLAST BLOCK BLOCCO DI ZAVORRA ALLA BASE		4.4	1.2	0.3	3800	
<b>CABEZA DE TORRE</b> TOWER HEAD TESTA DI TORRE		3.14	1.8	1.7	3200	
<b>GANCHO Y CARRO</b> HOOK AND TROLLEY GANCIO E CARRELLO		0.75	0.12	1.40	160	
		0.96	1.10	0.62	180	
<b>VIGA PRINCIPAL DE LA BASE</b> MAIN BASE BEAM TRAVE PRINCIPALE DELLA BASE		5.72	0.67	0.65	1560	
<b>SEMIVIGA SECUNDARIA DE LA BASE</b> HALF BASE BEAM SEMITRAVE SECONDARIA DELLA BASE		2.77	0.45	0.665	1500	
<b>CABINA Y SOPORTE</b> CABIN AND SUPPORT CABINA E SUPPORTO		2.3	0.94	2.35	450	

Sujeto a modificaciones/ Subject to modifications!! Si fa riserva di modifiche!

Junio / 2007

Declinamos toda responsabilidad derivada de la informacion proporcionada

This information is supplied without liability / Le indicazioni contenute si intendono salvo errori ed omissioni

## COMPOSICIÓN DE TORRE / TOWER COMPOSITION / STRUTTURA DELLA TORRE

25	E: 55TL/HEM 1.20 M39/M39 8/8
25	F: CAMPANA 4m 1.20/1.50 M39/M42 8/8
38	J: CAMPANA 10m 1.20/1.70 M39/M45 8/8
33	K: S17 1.70 M45/M45 8/8
31	L: S17 1.70 M45/M45 16/8
B090	N: S17-S21 M45/M45 8/8
B080	P: S21 M45/M45 16/8

