



T.G.M.



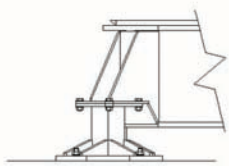
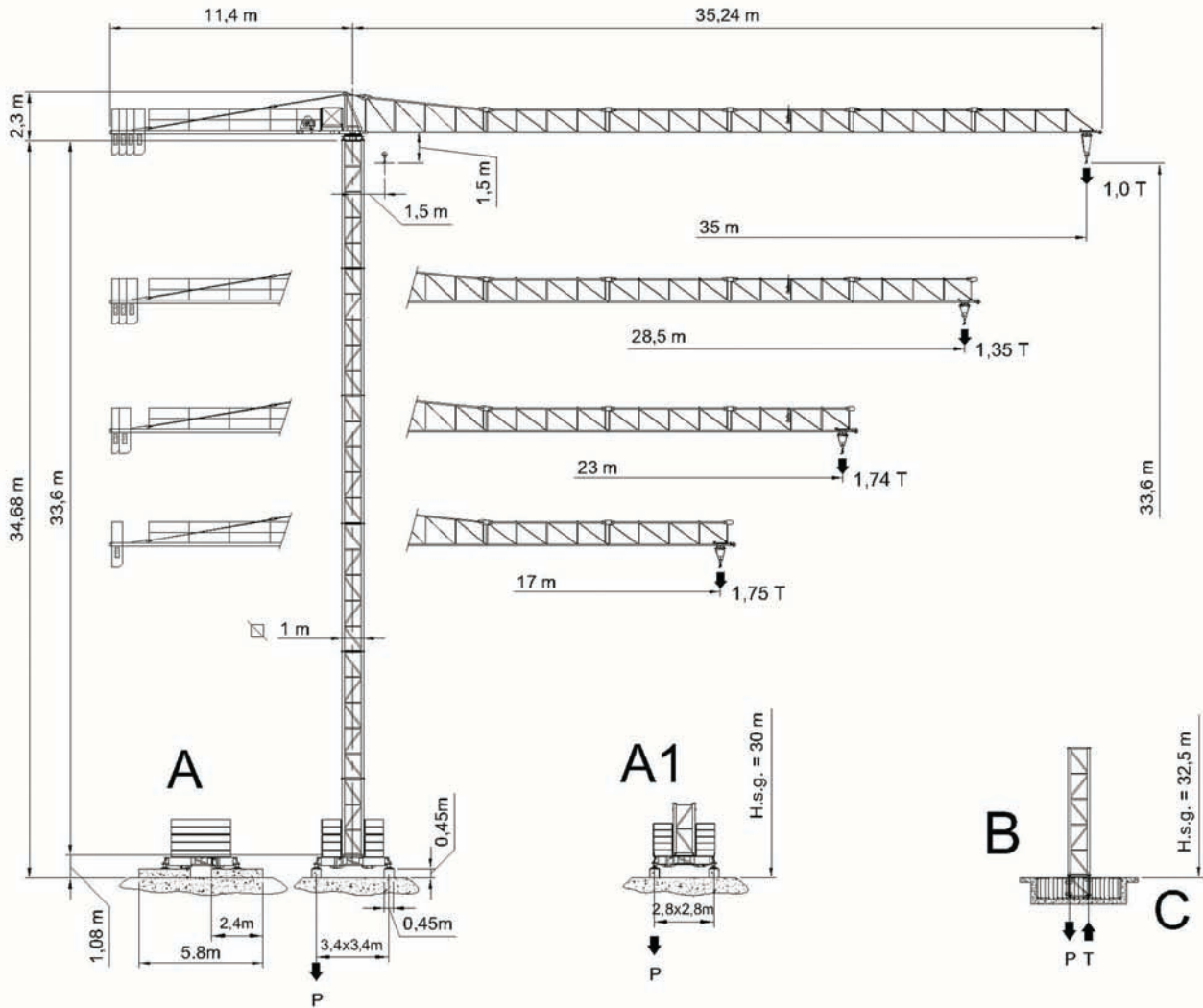
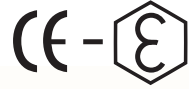
CITY CRANE
FLAT TOP
GR35/100



T.G.M.

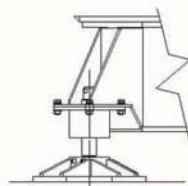
City Crane GR 35-100

GRU A TORRE A MONTAGGIO RAPIDO
CITY TOWER CRANE



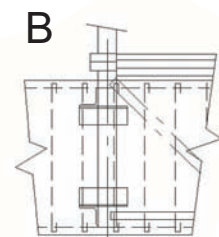
A

stabilizzatore fisso



A1

stabilizzatore regolabile



B



RAGGI E PORTATE RADIUS AND S.W.L. AUSLADUNG UND TRAGFAHIGKEIT PORTEE ET CHARGE UTILE

GR 35-100 3

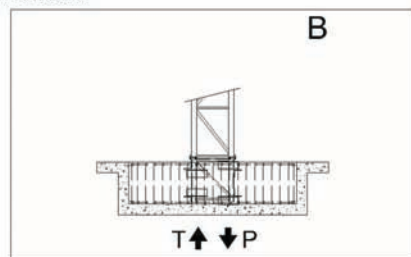
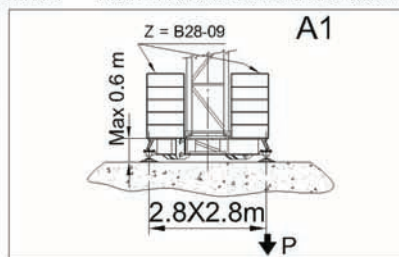
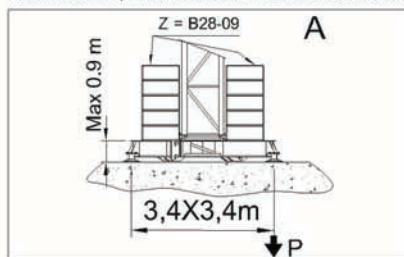
Portata max / Max s.w.l. Charge maxi / Max. Tragfähigkeit		2000 kg.				
Braccio / Jib Ausleger / Flèche	m.	17	23	28.5	35	
Campo di portata max da Max s.w.l. range from Charge maxi de Max. Tragfähigkeit von	1,4 m	a to à bis	17	22	22	21
Raggi (m.) Radii (m.) Portée (m.) Ausladung (m.)	6	2000	2000	2000	2000	
	8	2000	2000	2000	2000	
	10	2000	2000	2000	2000	
	12	2000	2000	2000	2000	
	14	2000	2000	2000	2000	
	15	2000	2000	2000	2000	
	16	1870	2000	2000	2000	
	17	1750	2000	2000	2000	
	18		2000	2000	2000	
	20		2000	1984	1844	
	22		1740	1790	1667	
	23			1705	1589	
	24			1628	1517	
	26			1494	1389	
	28			1350	1256	
	30				1187	
	32				1105	
34				1033		
35				1000		

BRACCIO E CONTRAPPESO JIB AND COUNTERWEIGHT FLECHE ET CONTREPOIDS AUSLEGER UND GEGENGEWICHTSBALLAST

Braccio / Jib Flèche / Ausleger	(m)	17	23	28,5	35
Contrappeso / Counterweight Contrepoids / Gegengewicht	(t)	2,384	3,198	4,012	4,826
Composizione Composition Komposition	Tipo / Type A 350 (814 Kg.) B 510 (1192 Kg.)	Quantità / Quantity / Nombre / Anzahl			
		-	1	2	3
		1	1	1	1

H.S.C., LEST DE BASE MAXI ET REACTIONS
HAKENHOHEN, MAXIMALE ZENTRALBALLASTE UND ECKKRAFT

ALTEZZA SOTTOGANCIO, ZAVORRA DI BASE, REAZIONI
H.U.H MAX. BASE BALLAST AND CORNER PRESSURE



A		
H	Z	P MAX.
m.	(t.)	(t.)
33,2	28	32
29,6	24	24,5
23,6	20	19
17,6	20	18
11,6	20	17

A1		
H	Z	P MAX.
m.	(t.)	(t.)
-	-	-
29,6	32	28
23,6	28	21
17,6	24	18
11,6	24	18

B		
H	T MAX.	P MAX.
m.	(t.)	(t.)
32,5	4,2	15,3
28,9	3,7	14,7
22,9	2,9	13,9
16,9	0,7	13,1
10,9	0,5	12,3

Argano - Hoisting winch - Treuil - Hubwerk	
Portata/Velocità - Load/Speed-Charge/Vitesse - Tragfähigkeit/Geschwindigkeit	
	12 HP (8,8 KW)
1	2000 kg. / 5,5 m/min
2	2000 kg. / 22 m/min
3	1000 kg. / 44 m/min

Velocità-Speed Vitesse-Geschwindigkeit		Potenza-Power Puissance-Leistung
0,38 0,71 1,02	giri/min r.p.m.	4 HP 2,9 KW
20/40	m/min	2 HP 1,4 KW

Conforme alla direttiva CEE 2000/14/CE sul livello acustico - In compliance with the ECC 2000/14/CE instruction on noise level - Conforme à directive CEE 2000/14/CE sur le niveau acoustique - Gemess EWG 2000/14/CE über Schall - Conforme con la directive CEE 2000/14/CE sobre el nivel acustico.

LISTA DEI PESI / PACKING LIST
LISTE DE COLISAGE / KOLLI-LISTE

Pos. Item	Pezzi Pieces	Denominazione Description	Schizzo Sketch	Dimensioni Dimensions			Peso Weight (Kg)		
				L	W	H	Unit.	Total.	
1	1	Elemento di freccia Jib element Élément de flèche Ausleger	N°1		5.930	0.790	1.930		597
	1		N°2		5.985	0.790	1.200		364
	1		N°3		11.860	0.790	1.200		330
	1		N°4		6.020	0.790	1.200		297
	1		N°5		1.700	0.790	1.200		263
	1		N°6		1.700	0.790	1.200		238
2	1	Controfreccia girevole,organo sollev., quadro elettrico, cuspide. Counterjib-turtable,hoisting winch, trolley jib, electrical box, a frame. Contreflèche tournante,treuil de levage, armoire électrique, pointe. Gegenausleger, Hubwinde, Drehwerk Schaltschrank.		3.75	1.705	2.3		1925	
	1	Elemento controfreccia esterno. External counterjib. Contreflèche extérieure. Externes gegenausleger.		9.1	0.875	1.23		795	
3	4	Blocchi di contrappeso Counterweight block Contre-poids Gegengewichtsblocke	A 350	0.600	0.35	2.145	814	3256	
	2		B 510	0.600	0.51	2.145	1192	2384	
4	1	Elemento di torre Tower element Élément de mât Turmstück		6.0	1.11	1.11		853	
				3.6	1.11	1.11		521	
5	1	Trave principale di base	TP (2,8x2,8m)	4.16	2.4	0.605		1083	
			TP (3,4x3,4m)	5.01	2.4	0.605		1154	
	2	Semi-trave di base	TC (2,8x2,8m)	1.15	0.3	0.49	172	344	
			TC (3,4x3,4m)	1.575	0.3	0.49	225	450	
6	18	Blocco di zavorra Base ballast block Lest de base Grundballastblöcken		2.800	0.360	0.900	2000	36000	

Stabilimento:
22076 Mozzate (CO)
via Piccinelli, 2
tel. 0331 833580 - fax 0331 688542
www.tgmcostruzioni.com

T.G.M. s.r.l.
Sede legale:
22076 Mozzate (CO)
via Moncornò, 48

