

# CITY CRANE FLAT TOP GR 40/100

**T.G.M.**



**progettazione,  
costruzione e  
vendita  
attrezzature  
standard e  
speciali per  
l'edilizia**

tel. 0331 833580

fax 0331 688542

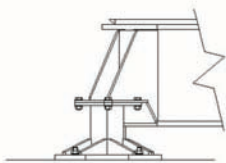
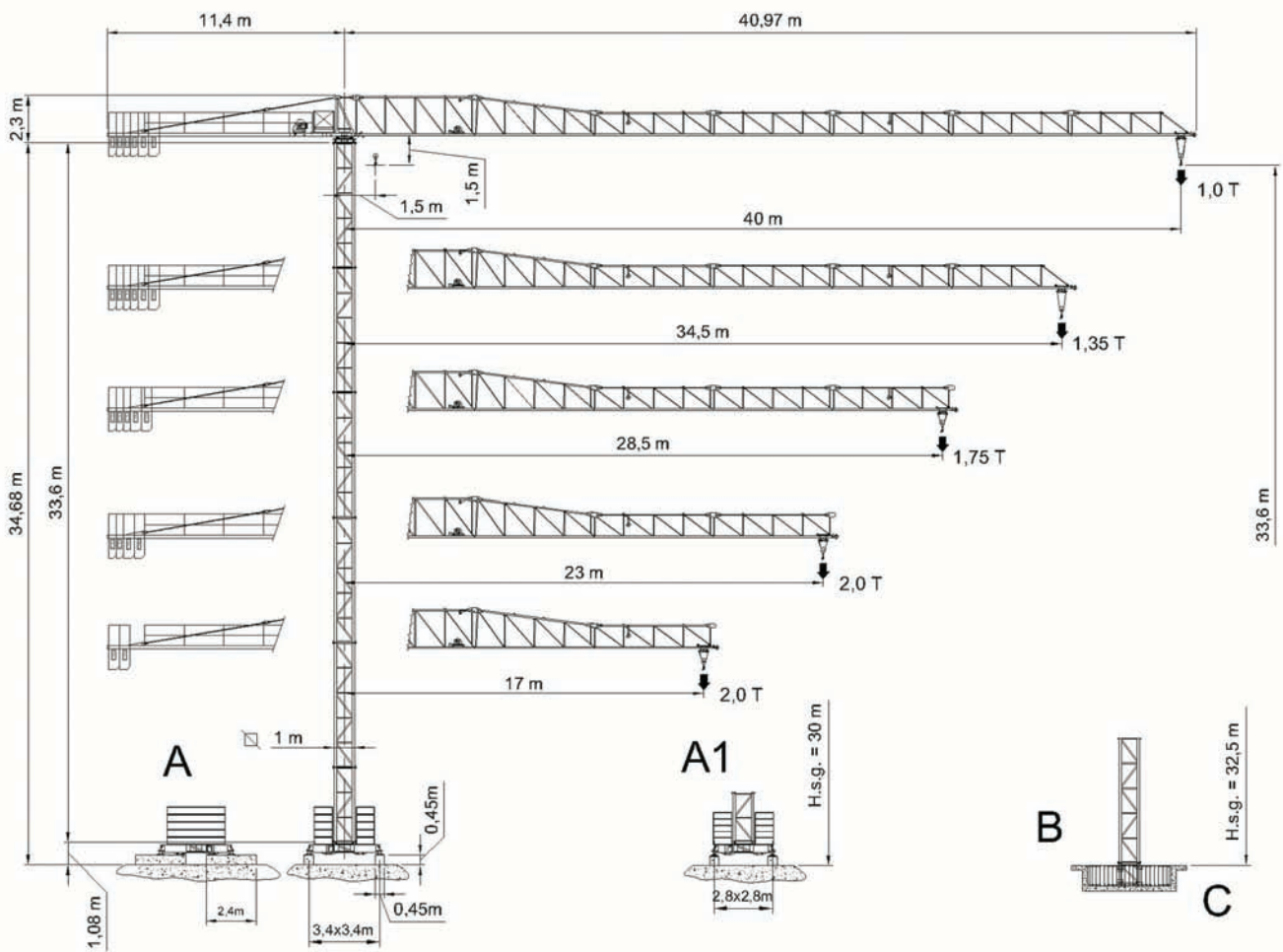
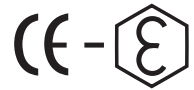
[www.tgmcotruzioni.com](http://www.tgmcotruzioni.com)



T.G.M.

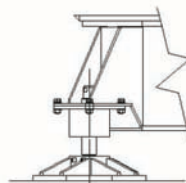
# City Crane GR 40-100

GRU A TORRE A MONTAGGIO RAPIDO  
CITY TOWER CRANE



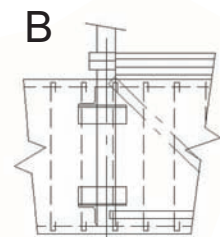
A

stabilizzatore fisso

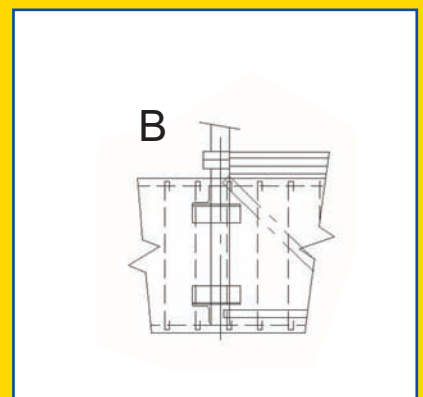


A1

stabilizzatore regolabile



B





RAGGI E PORTATE      RADIUS AND S.W.L.      AUSLADUNG UND TRAGFAHIGKEIT      PORTEE ET CHARGE UTILE

GR 40-100      3

Portata max / Max s.w.l. Charge maxi / Max. Tragfähigkeit		2000 kg.				
Braccio / Jib Ausleger / Flèche	m.	17	23	28.5	35	40
Campo di portata max da Max s.w.l. range from Charge maxi de Max. Tragfähigkeit von	1,4 m	a 17	to 20.9	à 25.2	à 23.8	bis 21.3
Raggi (m.) Radii (m.) Portée (m.) Ausladung (m.)	10	2000	2000	2000	2000	2000
	12	2000	2000	2000	2000	2000
	14	2000	2000	2000	2000	2000
	16	2000	2000	2000	2000	2000
	17	2000	2000	2000	2000	2000
	18		2000	2000	2000	2000
	20		2000	2000	2000	2000
	21		2000	2000	2000	2000
	22		2000	2000	2000	1930
	23		2000	2000	2000	1839
	24			2000	1990	1756
	25			2000	1905	1680
	26				1826	1610
	28				1750	1485
	30					1563
	32					1457
	34					1363
35					1350	
38						
40						

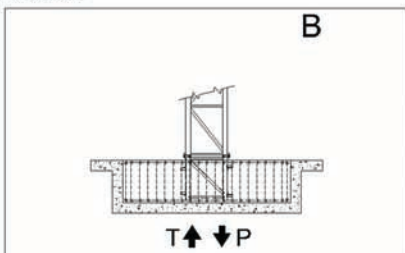
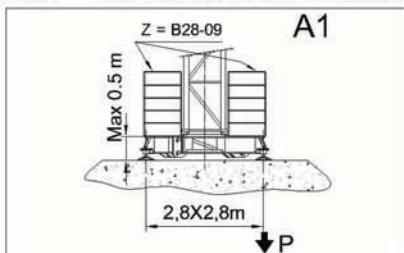
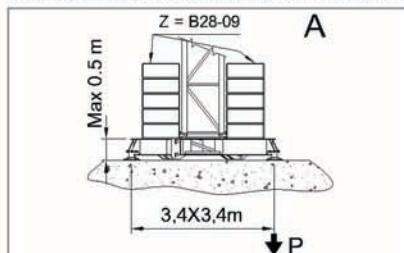
BRACCIO E CONTRAPPESO      JIB AND COUNTERWEIGHT      FLECHE ET CONTREPOIDS      AUSLEGER UND GEGENGEWICHTSBALLAST						
Braccio / Jib Flèche / Ausleger	(m)	17	23	28,5	35	40
Contrappeso / Counterweight Contrepois / Gegengewicht	(t)	2,384	4,012	4,826	5,640	5,640
Composizione Composition Komposition	Tipo / Type A 350 (814 Kg.) B 510 (1192 Kg.)	Quantità / Quantity / Nombre / Anzahl				
		-	2	3	4	4
		2	2	2	2	2

H.S.C., LEST DE BASE MAXI ET REACTIONS

HAKENHOHEN, MAXIMALE ZENTRALBALLASTE UND ECKKRAFT

ALTEZZA SOTTOGANCIO, ZAVORRA DI BASE, REAZIONI

H.U.H MAX. BASE BALLAST AND CORNER PRESSURE



A		
H	Z	P MAX.
m.	(t.)	(t.)
33,2	44	31
29,6	36	28
23,6	32	25
17,6	32	25
11,6	32	25

A1		
H	Z	P MAX.
m.	(t.)	(t.)
-	-	-
29,6	48	37
23,6	44	34
17,6	44	30
11,6	44	30

B		
H	T MAX.	P MAX.
m.	(t.)	(t.)
32,5	38,5	52,5
28,9	35,5	45,0
22,9	31,0	40,0
16,9	31,0	40,0
10,9	31,0	40,0

Argano - Hoisting winch - Treuil - Hubwerk	
Portata/Velocità - Load/Speed-Charge/Vitesse - Tragfähigkeit/Geschwindigkeit	
	12 HP (8,8 KW)
1	2000 kg. / 5,5 m/min
2	2000 kg. / 22 m/min
3	900 kg. / 44 m/min

Velocità-Speed Vitesse-Geschwindigkeit		Potenza-Power Puisance-Leistung
0,38 0,71 1,02	giri/min r.p.m.	4 HP 2,9 KW
20/40	m/min	2 HP 1,4 KW

Conforme alla direttiva CEE 2000/14/CE sul livello acustico - In compliance with the ECC 2000/14/CE instruction on noise level - Conforme à directive CEE 2000/14/CE sur le niveau acoustique - Gemess EWG 2000/14/CE über Schall - Conforme con la directive CEE 2000/14/CE sobre el nivel acustico.

LISTA DEI PESI / PACKING LIST  
LISTE DE COLISAGE / KOLLI-LISTE

Pos. Item	Pezzi Pieces	Denominazione Description	Schizzo Sketch	Dimensioni Dimensions			Peso Weight (Kg)		
				L	W	H	Unit.	Total.	
1	1	<b>Elemento di freccia</b> Jib element Élément de flèche Ausleger	N°1	5.930	0.790	2.040		650	
	1		N°2	5.930	0.790	1.930		597	
	1		N°3	5.985	0.790	1.190		364	
	1		N°4	11.860	0.790	1.190		321	
	1		N°5	6.020	0.790	1.190		297	
	1		N°6	1.700	0.790	1.190		263	
	1		N°7	1.700	0.790	1.190		238	
2	1	<b>Controfreccia girevole, argano sollev., quadro elettrico, cuspide.</b> Counterjib-tumble, hoisting winch, trolley jib, electrical box, a frame. Contreflèche tournante, trauil de levage, armoire électrique, pointe. Gegenausleger, Hubwinde, Drehwerk, Schaltschrank.		3.75	1.705	2.3		1925	
	1	<b>Elemento controfreccia esterno.</b> External counterjib. Contreflèche extérieure. Externes gegenausleger.		9.1	0.875	1.23		795	
3	4	<b>Blocchi di contrappeso</b> Counterweight block Contre-poids Gegengewichtsblocke		A 350	0.600	0.35	2.145	814	3256
	2			B 510	0.600	0.51	2.145	1192	2384
4	1	<b>Elemento di torre</b> Tower element Élément de mât Turmstück			6.0	1.11	1.11		985
					3.6	1.11	1.11		595
5	1	<b>Tronchetto di fondazione</b> Expendable foundation element Élément a sceller Fundamentanker		1.075	1.11	1.11		334	
6	1	<b>Trave principale di base</b>		TP (2,8x2,8m)	4.16	2.4	0.605	-	1083
				TP (3,4x3,4m)	5.01	2.4	0.605	-	1154
	2	<b>Semi-trave di base</b>		TP (2,8x2,8m)	1.15	0.3	0.49	172	344
				TP (3,4x3,4m)	1.575	0.3	0.49	225	450
7	24	<b>Blocco di zavorra</b> Base ballast block Lest de base Grundballastblöcke		(2,8x2,8m)	2.800	0.360	0.900	2000	48000
	22			(3,4x3,4m)	2.800	0.360	0.900	2000	44000

**Stabilimento:**  
22076 Mozzate (CO)  
via Piccinelli, 2  
tel. 0331 833580 - fax 0331 688542  
www.tgmcotruzioni.com

**T.G.M. s.r.l.**  
**Sede legale:**  
22076 Mozzate (CO)  
via Moncornò, 48

