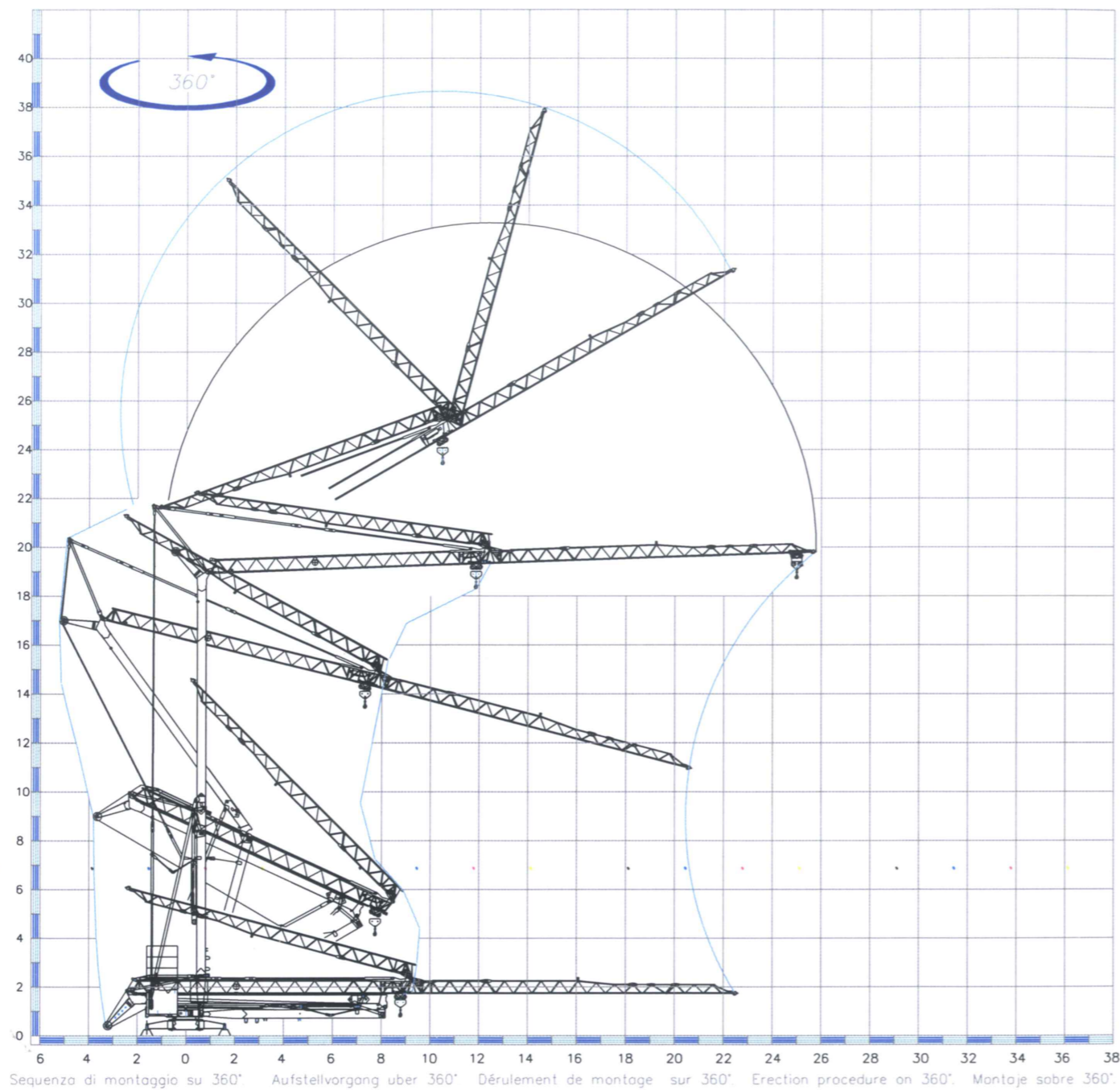


Gru idraulica  
di alta qualità

**OMV 280**



CRANES  
and  
MIXERS **VICARIO**

**Officine Meccaniche Vicario S.p.a.**

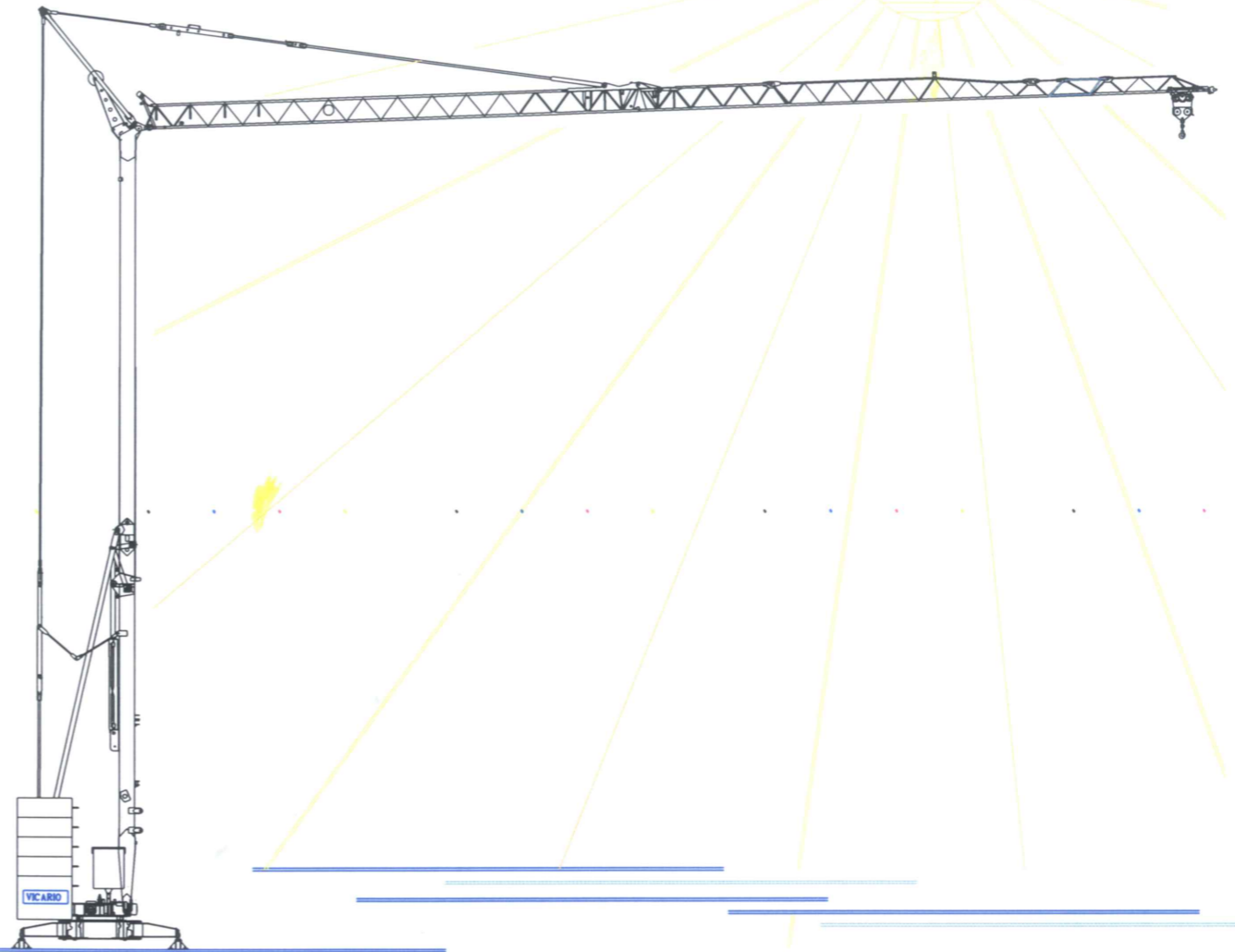
Via Piola, 4

28013 Gattico (NO) ITALIA

Tel. 0322 846690 Fax 0322 846692

Internet: [www.vicariogru.com](http://www.vicariogru.com) E-Mail: [omv@vicariogru.com](mailto:omv@vicariogru.com)

Agente di zona

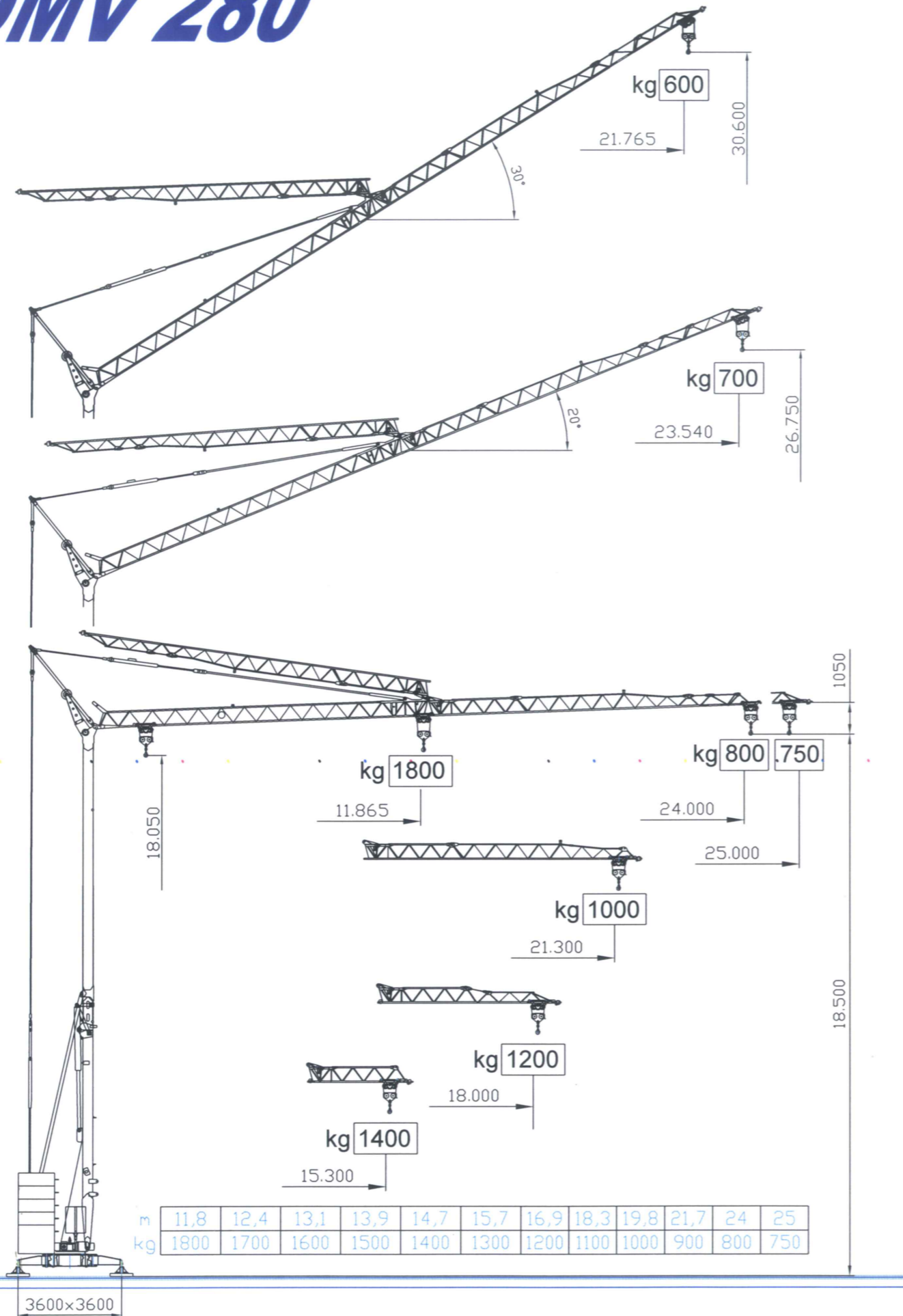


una novità delle Officine Meccaniche  
Ein neuer VICARIO Kran  
A new crane from VICARIO Industries

Une nouvelle grue de VICARIO  
Una nueva grua de VICARIO

**VICARIO**

# OMV 280



| PRESTAZIONI         | Performances    |        |    |     |    |    | Leistungen                  |    |    | Prestations     |    |    | Prestaciones |      |     |      |      |     |
|---------------------|-----------------|--------|----|-----|----|----|-----------------------------|----|----|-----------------|----|----|--------------|------|-----|------|------|-----|
| 50 Hz<br>V +6% -10% | 220 V - 3 kVA   |        |    |     |    |    | 6kVA                        |    |    | 380V-6 kVA      |    |    | 380 V-7,5kVA |      |     |      |      |     |
| m/l'<br>kg<br>KW    | 6,5             | 14 (*) | 20 | 6,5 | 14 | 33 | 6,5                         | 14 | 33 | 7               | 18 | 42 | 1800         | 1800 | 750 | 1800 | 1800 | 800 |
|                     | 7,5 (Inverter)  |        |    |     |    |    |                             |    |    | 7,5 (Inverter)  |    |    |              |      |     |      |      |     |
| m/l'<br>KW          | 14              |        |    | 24  |    |    | 32                          |    |    | 17              |    |    | 28           |      |     | 53   |      |     |
|                     | 3 (Inverter)    |        |    |     |    |    |                             |    |    | 3 (Inverter)    |    |    |              |      |     |      |      |     |
| KW                  | 0,3             |        |    | 0,6 |    |    | 0,85                        |    |    | 0,3             |    |    | 0,6          |      |     | 0,85 |      |     |
|                     | 1,85 (Inverter) |        |    |     |    |    |                             |    |    | 1,85 (Inverter) |    |    |              |      |     |      |      |     |
| min<br>KW           | 8<br>2,2        |        |    |     |    |    | kg 8900+[(2150x2)+(1100x8)] |    |    |                 |    |    |              |      |     |      |      |     |

**DOTAZIONE DI SERIE**  
Sollevamento, rotazione e carrello a tre velocità con controllo elettronico, zincatura della struttura e dei tiranti, contrappeso di montaggio, braccio modulare impennabile, carrello rompante, funzionamento con braccio ripiegato, comando a pulsantiera via cavo, carter di protezione per ralla e meccanismi, predisposizione per autoavanzamento e radiocomando, armadio elettrico in acciaio inox, documentazione a norme CEE.

**SERIENAUSSTATTUNG**  
Heben und Rotation mit drei Geschwindigkeiten, Strukturverzinkung, Montagegegengewicht, hochklappbarer, Modulararm, aufsteigender Wagen, Funktionieren mit eingeklapptem Arm, Steuerung mit Druckknopf über Kabel, Schutzvorrichtungen für Drehverbindungen und Mechanismen, Vorbereitung für Selbstballastnahme und Funksteuerung, elektrischer Schrank aus rostfreiem Stahl, Dokumentation gemäß EC Vorschriften

**STANDARD FEATURES**  
3-speed lifting and rotation with electronic control, galvanised structure, installation counterweight, pull-up modular jib, translation trolley, operation with folded jib, cable-operated pushbutton remote control, guard for slewing ring and mechanisms, designed to allow installation of self-ballasting device and radio control, stainless steel electrical cabinet, documentation in accordance with EU standards

**EQUIPEMENT DE SERIE**  
Levage e rotacion e trois vitesses e controle electronique, galvanisation de la structure et des tirants, contrepoids de montage, flache modulaire releveable, fonctionnement bras replie, commande par pulsadores via cable, carter de protection pour la couronne et les mecanismes, predisposition pour autolestage et commande radio, armoire electrique en acier inox, documentation conforme aux normes CEE

**DOTACION DE SERIE**  
Levantamiento y rotacion a tres velocidades con control electrónico, galvanización de la estructura, contrapeso de montaje, brazo modular empinnable, carro rompante, funcionamiento con brazo replgado, accionamiento por pulsadores via cable, carter de proteccion por corona de giro y mecanismos, predisposicion para autocontrapeso y radioccontrol, armario electrico de acero inox, documentacion segun normas CEE

